

For Research Use Only

SCO2 Polyclonal antibody

Catalog Number: 21223-1-AP

13 Publications



Basic Information

Catalog Number:

21223-1-AP

Size:

150ul, Concentration: 400 ug/ml by Nanodrop and 253 ug/ml by Bradford method using BSA as the standard;

Source:

Rabbit

Isotype:

IgG

Immunogen Catalog Number:

AG15663

GenBank Accession Number:

BC102025

GeneID (NCBI):

9997

UNIPROT ID:

O43819

Full Name:

SCO cytochrome oxidase deficient homolog 2 (yeast)

Calculated MW:

266 aa, 30 kDa

Observed MW:

27-30 kDa

Purification Method:

Antigen affinity purification

Recommended Dilutions:

WB: 1:500-1:3000

IHC: 1:50-1:500

IF-P: 1:50-1:500

Applications

Tested Applications:

WB, IHC, IF-P, ELISA

Cited Applications:

WB, IHC

Species Specificity:

human, mouse

Cited Species:

human, mouse

Note-IHC: suggested antigen retrieval with TE buffer pH 9.0; (*) Alternatively, antigen retrieval may be performed with citrate buffer pH 6.0

Positive Controls:

WB: HEK-293 cells, HUVEC cells, HepG2 cells

IHC: mouse skeletal muscle tissue, human hepatocirrhosis tissue, human heart tissue

IF-P: mouse skeletal muscle tissue,

Background Information

Human SCO2 is a mitochondrial membrane-bound protein involved in copper supply for the assembly of cytochrome c oxidase in eukaryotes. It is involved in the maintenance of cell copper homeostasis or, limited to HSCO2, as a downstream mediator of the Warburg effect, as its expression is regulated by p53 (PMID:17850752). This protein belongs to the SCO1/2 family and defects in SCO2 are the cause of fatal infantile cardioencephalomyopathy with cytochrome c oxidase deficiency (FIC).

Notable Publications

Author	Pubmed ID	Journal	Application
Fabao Liu	26309161	Oncotarget	WB, IHC
David Pacheu-Grau	25959673	Cell Metab	WB
Kunlun Yin	33723373	Cell Death Differ	WB

Storage

Storage:

Store at -20°C. Stable for one year after shipment.

Storage Buffer:

PBS with 0.02% sodium azide and 50% glycerol, pH7.3

Aliquoting is unnecessary for -20°C storage

*** 20ul sizes contain 0.1% BSA

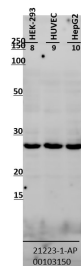
For technical support and original validation data for this product please contact:

T: 1 (888) 4PTGLAB (1-888-478-4522) (toll free in USA), or 1(312) 455-8498 (outside USA)

E: proteintech@ptglab.com
W: ptglab.com

This product is exclusively available under Proteintech Group brand and is not available to purchase from any other manufacturer.

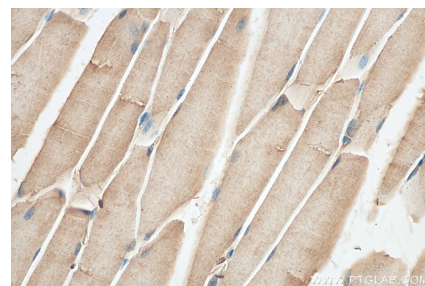
Selected Validation Data



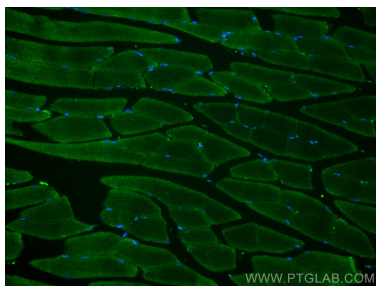
Various lysates were subjected to SDS PAGE followed by western blot with 21223-1-AP (SCO2 antibody) at dilution of 1:1500 incubated at room temperature for 1.5 hours.



Immunohistochemical analysis of paraffin-embedded mouse skeletal muscle tissue slide using 21223-1-AP (SCO2 antibody) at dilution of 1:200 (under 10x lens). Heat mediated antigen retrieval with Tris-EDTA buffer (pH 9.0).



Immunohistochemical analysis of paraffin-embedded mouse skeletal muscle tissue slide using 21223-1-AP (SCO2 antibody) at dilution of 1:200 (under 40x lens). Heat mediated antigen retrieval with Tris-EDTA buffer (pH 9.0).



Immunofluorescent analysis of (4% PFA) fixed mouse skeletal muscle tissue using SCO2 antibody (21223-1-AP) at dilution of 1:200 and CoraLite®488-Conjugated Goat Anti-Rabbit IgG(H+L).