

NHLRC1 Polyclonal antibody

Catalog Number: 21310-1-AP

Basic Information

Catalog Number: 21310-1-AP	GenBank Accession Number: BC103888	Purification Method: Antigen affinity purification
Size: 150ul , Concentration: 450 ug/ml by Nanodrop and 300 ug/ml by Bradford method using BSA as the standard;	GeneID (NCBI): 378884	Recommended Dilutions: WB 1:500-1:1000 IHC 1:20-1:200
Source: Rabbit	UNIPROT ID: Q6VVB1	
Isotype: IgG	Full Name: NHL repeat containing 1	
Immunogen Catalog Number: AG15940	Calculated MW: 395 aa, 42 kDa	
	Observed MW: 45-47 kDa	

Applications

Tested Applications: WB, IHC, ELISA	Positive Controls:
Species Specificity: human	WB : L02 cells,
Note-IHC: suggested antigen retrieval with TE buffer pH 9.0; (*) Alternatively, antigen retrieval may be performed with citrate buffer pH 6.0	IHC : human heart tissue, human brain tissue

Background Information

NHLRC1(NHL repeat-containing protein 1) is also named as Malin,EPM2B. It is predicted to encode a 42.3-kDa (395amino acid) protein, malin, containing a detectable zinc-binding RING finger and six NHL-repeat domains(PMID:12958597).It can suppresses the cellular toxicity of misfolded proteins by promoting their degradation through the ubiquitin-proteasome system (UPS).Defects in NHLRC1 are a cause of progressive myoclonic epilepsy type 2 (EPM2).This antibody is specific to NHLRC1.

Storage

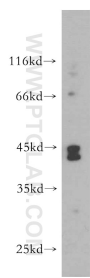
Storage:
Store at -20°C. Stable for one year after shipment.
Storage Buffer:
PBS with 0.02% sodium azide and 50% glycerol pH 7.3.
Aliquoting is unnecessary for -20°C storage

***** 20ul sizes contain 0.1% BSA**

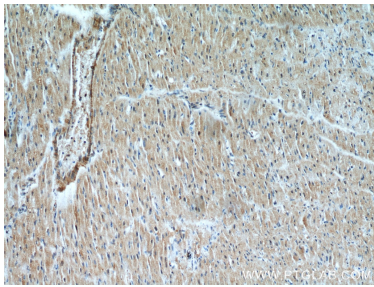
For technical support and original validation data for this product please contact:
T: 1 (888) 4PTGLAB (1-888-478-4522) (toll free in USA), or 1(312) 455-8498 (outside USA)
E: proteintech@ptglab.com
W: ptglab.com

This product is exclusively available under Proteintech Group brand and is not available to purchase from any other manufacturer.

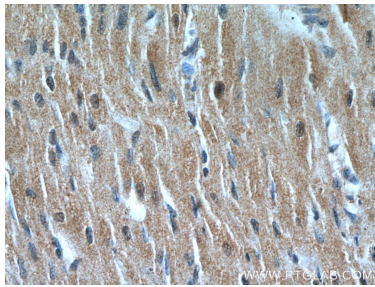
Selected Validation Data



L02 cells were subjected to SDS PAGE followed by western blot with 21310-1-AP (NHLRC1 antibody) at dilution of 1:400 incubated at room temperature for 1.5 hours.



Immunohistochemical analysis of paraffin-embedded human heart using 21310-1-AP (NHLRC1 antibody) at dilution of 1:50 (under 10x lens).



Immunohistochemical analysis of paraffin-embedded human heart using 21310-1-AP (NHLRC1 antibody) at dilution of 1:50 (under 40x lens).