

For Research Use Only

# RBM39 Polyclonal antibody

Catalog Number: 21339-1-AP

Featured Product

9 Publications



## Basic Information

### Catalog Number:

21339-1-AP

### Size:

150ul, Concentration: 600 ug/ml by Nanodrop;

### Source:

Rabbit

### Isotype:

IgG

### Immunogen Catalog Number:

AG15584

### GenBank Accession Number:

BC141835

### GeneID (NCBI):

9584

### UNIPROT ID:

Q14498

### Full Name:

RNA binding motif protein 39

### Calculated MW:

530 aa, 59 kDa

### Observed MW:

60-70 kDa

### Purification Method:

Antigen affinity purification

### Recommended Dilutions:

WB 1:500-1:2000

IHC 1:20-1:200

IF/ICC 1:50-1:500

## Applications

### Tested Applications:

WB, IHC, IF/ICC, ELISA

### Cited Applications:

WB, IHC, IF, RIP

### Species Specificity:

human

### Cited Species:

human

**Note-IHC: suggested antigen retrieval with TE buffer pH 9.0; (\*) Alternatively, antigen retrieval may be performed with citrate buffer pH 6.0**

### Positive Controls:

WB : HEK-293T cells, human skeletal muscle tissue

IHC : human pancreas tissue,

IF/ICC : HEK-293 cells,

## Background Information

RBM39, also named as HCC1 or RNPC2, is a 530 amino acid protein, which contains three RRM (RNA recognition motif) domains and belongs to the splicing factor SR family. RBM39 is widely expressed in various tissues and with highly expression in pancreas, skeletal muscle, lung and brain. RBM39 is a transcriptional coactivator for steroid nuclear receptors ESR1/ER-alpha and ESR2/ER-beta, and JUN/AP-1. RBM39 may be involved in pre-mRNA splicing process.

## Notable Publications

Author	Pubmed ID	Journal	Application
Jia Tong	31289203	Haematologica	WB
Jiaqi Lu	34420308	J Proteome Res	WB
Nianli Liu	39278404	Cell Mol Gastroenterol Hepatol	IHC,IF

## Storage

### Storage:

Store at -20°C. Stable for one year after shipment.

### Storage Buffer:

PBS with 0.02% sodium azide and 50% glycerol pH 7.3.

Aliquoting is unnecessary for -20°C storage

\*\*\* 20ul sizes contain 0.1% BSA

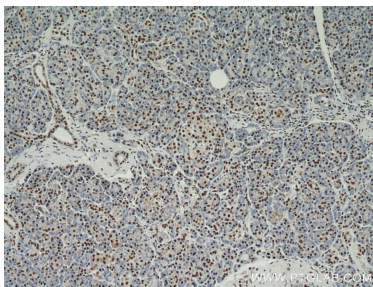
For technical support and original validation data for this product please contact:

T: 1 (888) 4PTGLAB (1-888-478-4522) (toll free in USA), or 1(312) 455-8498 (outside USA)

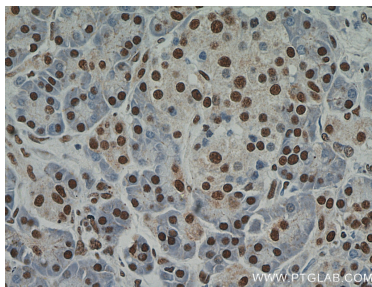
E: [proteintech@ptglab.com](mailto:proteintech@ptglab.com)  
W: [ptglab.com](http://ptglab.com)

This product is exclusively available under Proteintech Group brand and is not available to purchase from any other manufacturer.

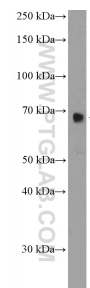
## Selected Validation Data



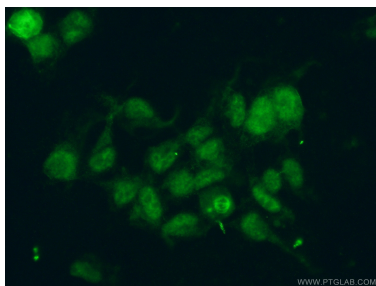
Immunohistochemical analysis of paraffin-embedded human pancreas using 21339-1-AP (RBM39 antibody) at dilution of 1:50 (under 10x lens).



Immunohistochemical analysis of paraffin-embedded human pancreas using 21339-1-AP (RBM39 antibody) at dilution of 1:50 (under 40x lens).



HEK-293T cells were subjected to SDS PAGE followed by western blot with 21339-1-AP (RBM39 Antibody) at dilution of 1:1000 incubated at room temperature for 1.5 hours.



Immunofluorescent analysis of (4% PFA) fixed HEK-293 cells using 21339-1-AP (RBM39 antibody) at dilution of 1:50 and Alexa Fluor 488-conjugated AffiniPure Goat Anti-Rabbit IgG(H+L).