

For Research Use Only

# PLEKHO2 Polyclonal antibody

Catalog Number: 21356-1-AP

1 Publications



## Basic Information

### Catalog Number:

21356-1-AP

### Size:

150ul, Concentration: 287 ug/ml by Nanodrop and 287 ug/ml by Bradford method using BSA as the standard;

### Source:

Rabbit

### Isotype:

IgG

### Immunogen Catalog Number:

AG15786

### GenBank Accession Number:

BC008744

### GeneID (NCBI):

80301

### UNIPROT ID:

Q8TD55

### Full Name:

pleckstrin homology domain containing, family O member 2

### Calculated MW:

490 aa, 53 kDa

### Observed MW:

53 kDa

### Purification Method:

Antigen affinity purification

### Recommended Dilutions:

WB 1:200-1:1000

IHC 1:50-1:500

IF/ICC 1:200-1:800

## Applications

### Tested Applications:

WB, IHC, IF/ICC, ELISA

### Cited Applications:

IHC

### Species Specificity:

human, mouse

### Cited Species:

human

**Note-IHC: suggested antigen retrieval with TE buffer pH 9.0; (\*) Alternatively, antigen retrieval may be performed with citrate buffer pH 6.0**

### Positive Controls:

WB : HeLa cells, mouse thymus tissue

IHC : mouse spleen tissue,

IF/ICC : HeLa cells,

## Background Information

Pleckstrin homology domain-containing proteins family O member 2 (PLEKHO2)'s function remains largely unknown. Genetic polymorphisms of PLEKHO2 contribute to diabetic retinopathy (DR) development. Functional prediction analysis strengthened the likelihood of participation of PLEKHO2 in the development of DR (Eric C. Han et al., 2012).

## Notable Publications

Author	Pubmed ID	Journal	Application
Junchao Zhu	38169731	Front Immunol	IHC

## Storage

### Storage:

Store at -20°C. Stable for one year after shipment.

### Storage Buffer:

PBS with 0.02% sodium azide and 50% glycerol, pH7.3

Aliquoting is unnecessary for -20°C storage

\*\*\* 20ul sizes contain 0.1% BSA

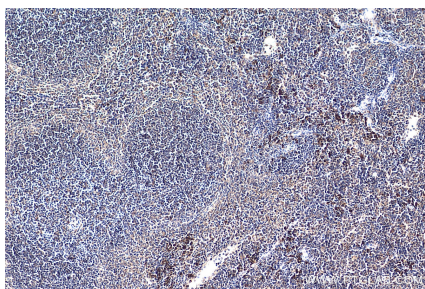
For technical support and original validation data for this product please contact:

T: 1 (888) 4PTGLAB (1-888-478-4522) (toll free in USA), or 1(312) 455-8498 (outside USA)

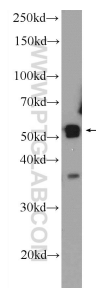
E: [proteintech@ptglab.com](mailto:proteintech@ptglab.com)  
W: [ptglab.com](http://ptglab.com)

This product is exclusively available under Proteintech Group brand and is not available to purchase from any other manufacturer.

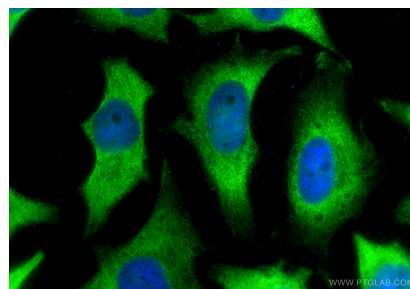
## Selected Validation Data



Immunohistochemical analysis of paraffin-embedded mouse spleen tissue slide using 21356-1-AP (PLEKHO2 antibody) at dilution of 1:200 (under 10x lens). Heat mediated antigen retrieval with Tris-EDTA buffer (pH 9.0).



HeLa cells were subjected to SDS PAGE followed by western blot with 21356-1-AP (PLEKHO2 Antibody) at dilution of 1:300 incubated at 4 degree celsius over night.



Immunofluorescent analysis of (-20°C Ethanol) fixed HeLa cells using PLEKHO2 antibody (21356-1-AP) at dilution of 1:400 and CoraLite®488-Conjugated Goat Anti-Rabbit IgG(H+L) (SA00013-2).