

For Research Use Only

# Pan-PAX Polyclonal antibody

Catalog Number: 21383-1-AP

5 Publications



## Basic Information

### Catalog Number:

21383-1-AP

### Size:

150ul, Concentration: 450 ug/ml by Nanodrop and 353 ug/ml by Bradford method using BSA as the standard;

### Source:

Rabbit

### Isotype:

IgG

### Immunogen Catalog Number:

AG16018

### GenBank Accession Number:

BC001060

### GeneID (NCBI):

7849

### UNIPROT ID:

Q06710

### Full Name:

paired box 8

### Calculated MW:

450 aa, 48 kDa

### Observed MW:

36-48 kDa

### Purification Method:

Antigen affinity purification

### Recommended Dilutions:

WB 1:500-1:2000

IP 0.5-4.0 ug for 1.0-3.0 mg of total protein lysate

IHC 1:600-1:2400

IF/ICC 1:200-1:800

## Applications

### Tested Applications:

WB, IHC, IF/ICC, IP, ELISA

### Cited Applications:

IHC, IF

### Species Specificity:

human, mouse, rat

### Cited Species:

human, mouse, rat, pig

**Note-IHC: suggested antigen retrieval with TE buffer pH 9.0; (\*) Alternatively, antigen retrieval may be performed with citrate buffer pH 6.0**

### Positive Controls:

WB : SKOV-3 cells, A2780 cells

IP : SKOV-3 cells,

IHC : human ovary cancer tissue, human kidney tissue, human renal cell carcinoma tissue

IF/ICC : SKOV-3 cells,

## Background Information

PAX genes encode a family of developmentally regulated transcription factors that have been implicated in a number of human and murine congenital disorders, as well as in tumorigenesis. These genes are defined by the presence of an evolutionarily conserved DNA binding domain, termed the paired domain. Many paired domain-containing proteins recognize a common sequence motif. The immunogen of this antibody is the Paired box domain of PAX family. This antibody is a Pan-PAX antibody.

## Notable Publications

Author	Pubmed ID	Journal	Application
Zi-Yang Zhang	32606037	Sci Signal	IHC
Sergio E Palma-Vera	28231273	PLoS One	IF
Qiwang Ma	29198839	Life Sci	IF

## Storage

### Storage:

Store at -20°C. Stable for one year after shipment.

### Storage Buffer:

PBS with 0.02% sodium azide and 50% glycerol pH 7.3.

Aliquoting is unnecessary for -20°C storage

\*\*\* 20ul sizes contain 0.1% BSA

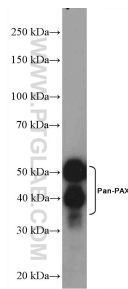
For technical support and original validation data for this product please contact:

T: 1 (888) 4PTGLAB (1-888-478-4522) (toll free in USA), or 1(312) 455-8498 (outside USA)

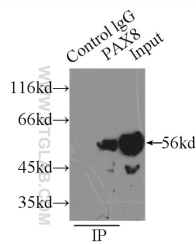
E: [proteintech@ptglab.com](mailto:proteintech@ptglab.com)  
W: [ptglab.com](http://ptglab.com)

This product is exclusively available under Proteintech Group brand and is not available to purchase from any other manufacturer.

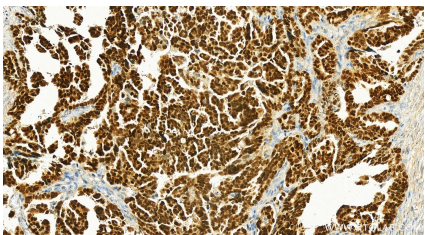
Selected Validation Data



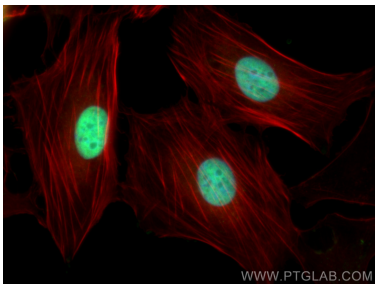
SKOV-3 cells were subjected to SDS PAGE followed by western blot with 21383-1-AP (Pan-PAX antibody) at dilution of 1:1000 incubated at room temperature for 1.5 hours.



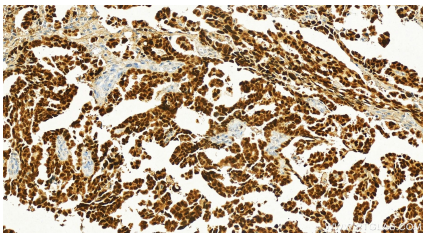
IP result of anti-Pan-PAX (IP:21383-1-AP, 3ug; Detection:21383-1-AP 1:800) with SKOV-3 cells lysate 2500ug.



Immunohistochemical analysis of paraffin-embedded human ovarian cancer slide using 21383-1-AP (Pan-PAX antibody) at dilution of 1:1200 (under 20x lens). Heat mediated antigen retrieval with Tris-EDTA buffer (pH 9.0).



Immunofluorescent analysis of (4% PFA) fixed SKOV-3 cells using Pan-PAX antibody (21383-1-AP) at dilution of 1:400 and CoraLite®488-Conjugated AffiniPure Goat Anti-Rabbit IgG(H+L), CL594-Phalloidin (red).



Immunohistochemical analysis of paraffin-embedded human ovarian cancer slide using 21383-1-AP (Pan-PAX antibody) at dilution of 1:1200 (under 20x lens). Heat mediated antigen retrieval with Tris-EDTA buffer (pH 9.0).