

For Research Use Only

IGSF21 Polyclonal antibody

Catalog Number: 21465-1-AP

Featured Product

5 Publications



Basic Information

Catalog Number:

21465-1-AP

Size:

150ul, Concentration: 400 ug/ml by Nanodrop and 200 ug/ml by Bradford method using BSA as the standard;

Source:

Rabbit

Isotype:

IgG

Immunogen Catalog Number:

AG15062

GenBank Accession Number:

BC007618

GeneID (NCBI):

84966

UNIPROT ID:

Q96ID5

Full Name:

immunoglobulin superfamily, member 21

Calculated MW:

467 aa, 52 kDa

Observed MW:

48-50 kDa

Purification Method:

Antigen affinity purification

Recommended Dilutions:

WB 1:500-1:2000

Applications

Tested Applications:

WB, ELISA

Cited Applications:

WB, IHC, CoIP

Species Specificity:

human, mouse, rat

Cited Species:

human, mouse

Positive Controls:

WB : mouse brain tissue,

Background Information

IGSF21 (Immunoglobulin superfamily member 21) is a GPI-anchored protein that contains two immunoglobulin-like domains (Ig-like 1 and Ig-like 2). The Ig-like 1 domain of IGSF21 is indispensable for synaptogenic activity whereas its Ig-like 2 domain is secondarily responsible for the activity. It has been reported that IGSF21 selectively regulates inhibitory presynaptic differentiation through interacting with presynaptic neuroligin 2 and plays a crucial role in synaptic inhibition in the brain. (PMID: 28864826)

Notable Publications

Author	Pubmed ID	Journal	Application
Yuko Tanabe	28864826	Nat Commun	WB
Saori Toyoda	39774335	EMBO Rep	WB
Nicolas Chofflet	38571813	Front Mol Neurosci	WB, CoIP

Storage

Storage:

Store at -20°C. Stable for one year after shipment.

Storage Buffer:

PBS with 0.02% sodium azide and 50% glycerol pH 7.3.

Aliquoting is unnecessary for -20°C storage

*** 20ul sizes contain 0.1% BSA

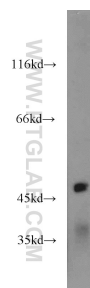
For technical support and original validation data for this product please contact:

T: 1 (888) 4PTGLAB (1-888-478-4522) (toll free in USA), or 1(312) 455-8498 (outside USA)

E: proteintech@ptglab.com
W: ptglab.com

This product is exclusively available under Proteintech Group brand and is not available to purchase from any other manufacturer.

Selected Validation Data



mouse brain tissue were subjected to SDS PAGE followed by western blot with 21465-1-AP (IGSF21 antibody) at dilution of 1:1000 incubated at room temperature for 1.5 hours.