

For Research Use Only

TMEM230 Polyclonal antibody

Catalog Number: 21466-1-AP **4 Publications**



Basic Information

Catalog Number: 21466-1-AP	GenBank Accession Number: BC011990	Purification Method: Antigen affinity purification
Size: 150ul, Concentration: 350 µg/ml by Nanodrop and 267 µg/ml by Bradford method using BSA as the standard;	GeneID (NCBI): 29058	Recommended Dilutions: WB 1:1000-1:4000 IHC 1:50-1:500
Source: Rabbit	Full Name: chromosome 20 open reading frame 30	
Isotype: IgG	Calculated MW: 183 aa, 20 kDa	
Immunogen Catalog Number: AG15080	Observed MW: 13 kDa	

Applications

Tested Applications: IHC, WB, ELISA	Positive Controls: WB: HepG2 cells, COLO 320 cells, HEK-293 cells, HeLa cells IHC: human brain tissue, human colon cancer tissue, human liver cancer tissue, human pancreas tissue
Cited Applications: IF, IHC, WB	
Species Specificity: human	
Cited Species: human, mouse	
Note-IHC: suggested antigen retrieval with TE buffer pH 9.0; (*) Alternatively, antigen retrieval may be performed with citrate buffer pH 6.0	

Background Information

The function of TMEM230/C20orf30 has not been widely studied, and is yet to be fully elucidated. TMEM230 is primarily a transmembrane protein of synaptic vesicles in neurons. Disease-linked TMEM230 mutants impair synaptic vesicle trafficking leading to Parkinson's disease. Two isoforms were produced by alternative splicing with predicted MW of 13 and 20 kDa. 13 kDa isoform accounts for >95% of the total protein isoforms(27270108).

Notable Publications

Author	Pubmed ID	Journal	Application
Boris Simonetti	31576058	Nat Cell Biol	WB
Han-Xiang Deng	27270108	Nat Genet	WB
Sandra L Siedlak	28527219	J Alzheimers Dis	WB, IHC

Storage

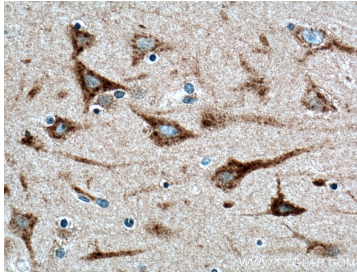
Storage:
Store at -20°C. Stable for one year after shipment.
Storage Buffer:
PBS with 0.02% sodium azide and 50% glycerol pH 7.3.
Aliquoting is unnecessary for -20°C storage

*** 20ul sizes contain 0.1% BSA

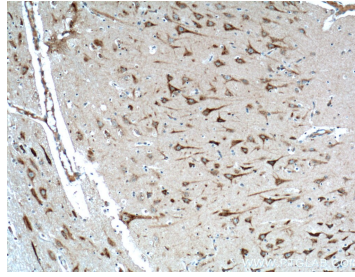
For technical support and original validation data for this product please contact:
T: 1 (888) 4PTGLAB (1-888-478-4522) (toll free in USA), or 1(312) 455-8498 (outside USA)
E: proteintech@ptglab.com
W: ptglab.com

This product is exclusively available under Proteintech Group brand and is not available to purchase from any other manufacturer.

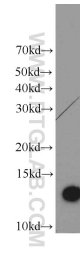
Selected Validation Data



Immunohistochemical analysis of paraffin-embedded human brain tissue slide using 21466-1-AP (TMEM230 antibody) at dilution of 1:200 (under 40x lens). Heat mediated antigen retrieval with Tris-EDTA buffer (pH 9.0).



Immunohistochemical analysis of paraffin-embedded human brain tissue slide using 21466-1-AP (TMEM230 antibody) at dilution of 1:200 (under 10x lens). Heat mediated antigen retrieval with Tris-EDTA buffer (pH 9.0).



HepG2 cells were subjected to SDS PAGE followed by western blot with 21466-1-AP (TMEM230 antibody) at dilution of 1:1000 incubated at room temperature for 1.5 hours.