

For Research Use Only

# KLRF1 Polyclonal antibody

Catalog Number: 21510-1-AP



## Basic Information

<b>Catalog Number:</b> 21510-1-AP	<b>GenBank Accession Number:</b> BC098257	<b>Purification Method:</b> Antigen affinity purification
<b>Size:</b> 150ul , Concentration: 600 µg/ml by Nanodrop and 333 µg/ml by Bradford method using BSA as the standard;	<b>GeneID (NCBI):</b> 51348	<b>Recommended Dilutions:</b> WB 1:500-1:1000 IHC 1:20-1:200
<b>Source:</b> Rabbit	<b>Full Name:</b> killer cell lectin-like receptor subfamily F, member 1	
<b>Isotype:</b> IgG	<b>Calculated MW:</b> 231 aa, 27 kDa	
<b>Immunogen Catalog Number:</b> AG16008	<b>Observed MW:</b> 68 kDa	

## Applications

<b>Tested Applications:</b> IHC, WB, ELISA	<b>Positive Controls:</b>
<b>Species Specificity:</b> human	<b>WB :</b> human spleen tissue,
<b>Note-IHC:</b> <i>suggested antigen retrieval with TE buffer pH 9.0; (*) Alternatively, antigen retrieval may be performed with citrate buffer pH 6.0</i>	<b>IHC :</b> human tonsillitis tissue,

## Background Information

### Storage

**Storage:**  
Store at -20°C. Stable for one year after shipment.  
**Storage Buffer:**  
PBS with 0.02% sodium azide and 50% glycerol pH 7.3.  
Aliquoting is unnecessary for -20°C storage

\*\*\* 20ul sizes contain 0.1% BSA

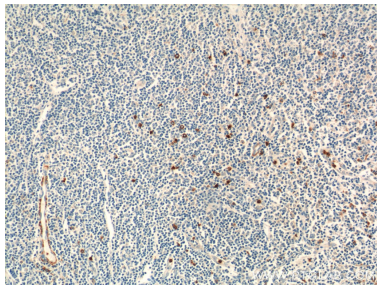
For technical support and original validation data for this product please contact:  
T: 1 (888) 4PTGLAB (1-888-478-4522) (toll free in USA), or 1(312) 455-8498 (outside USA)  
E: [proteintech@ptglab.com](mailto:proteintech@ptglab.com)  
W: [ptglab.com](http://ptglab.com)

This product is exclusively available under Proteintech Group brand and is not available to purchase from any other manufacturer.

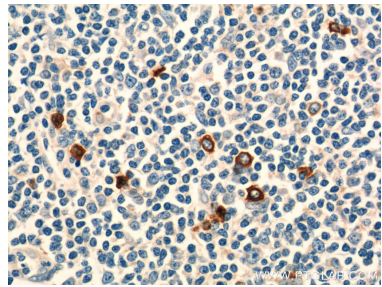
Selected Validation Data



human spleen tissue were subjected to SDS PAGE followed by western blot with 21510-1-AP (KLRF1 antibody) at dilution of 1:500 incubated at room temperature for 1.5 hours.



Immunohistochemical analysis of paraffin-embedded human tonsillitis tissue slide using 21510-1-AP (KLRF1 Antibody) at dilution of 1:50 (under 10x lens).



Immunohistochemical analysis of paraffin-embedded human tonsillitis tissue slide using 21510-1-AP (KLRF1 Antibody) at dilution of 1:50 (under 40x lens).