

For Research Use Only

EXO G Polyclonal antibody

Catalog Number: 21523-1-AP

Featured Product

3 Publications



Basic Information

Catalog Number:

21523-1-AP

Size:

150ul, Concentration: 400 ug/ml by Nanodrop and 233 ug/ml by Bradford method using BSA as the standard;

Source:

Rabbit

Isotype:

IgG

Immunogen Catalog Number:

AG16122

GenBank Accession Number:

BC104212

GeneID (NCBI):

9941

UNIPROT ID:

Q9Y2C4

Full Name:

endo/exonuclease (5'-3'),
endonuclease G-like

Calculated MW:

368 aa, 41 kDa

Observed MW:

45 kDa

Purification Method:

Antigen affinity purification

Recommended Dilutions:

WB 1:500-1:3000

Applications

Tested Applications:

WB, ELISA

Cited Applications:

WB

Species Specificity:

human, mouse, rat

Cited Species:

human, rat

Positive Controls:

WB : mouse cerebellum tissue,

Notable Publications

Author	Pubmed ID	Journal	Application
Min Jiang	34215584	Sci Adv	
Jingsong Xiao	33515431	J Mol Neurosci	WB
Amandine Moretton	28453550	PLoS One	WB

Storage

Storage:

Store at -20°C. Stable for one year after shipment.

Storage Buffer:

PBS with 0.02% sodium azide and 50% glycerol pH 7.3.

Aliquoting is unnecessary for -20°C storage

*** 20ul sizes contain 0.1% BSA

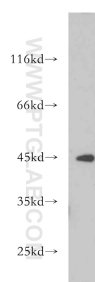
For technical support and original validation data for this product please contact:

T: 1 (888) 4PTGLAB (1-888-478-4522) (toll free
in USA), or 1(312) 455-8498 (outside USA)

E: proteintech@ptglab.com
W: ptglab.com

This product is exclusively available under Proteintech Group brand and is not available to purchase from any other manufacturer.

Selected Validation Data



mouse cerebellum tissue were subjected to SDS PAGE followed by western blot with 21523-1-AP (EXOG antibody) at dilution of 1:500 incubated at room temperature for 1.5 hours.