

For Research Use Only

FAM120A Polyclonal antibody

Catalog Number: 21529-1-AP

Featured Product

1 Publications



Basic Information

Catalog Number:

21529-1-AP

Size:

150ul, Concentration: 300 ug/ml by Nanodrop and 247 ug/ml by Bradford method using BSA as the standard;

Source:

Rabbit

Isotype:

IgG

Immunogen Catalog Number:

AG16149

GenBank Accession Number:

BC111736

GeneID (NCBI):

23196

UNIPROT ID:

Q9NZB2

Full Name:

family with sequence similarity 120A

Calculated MW:

1118 aa, 122 kDa

Observed MW:

125 kDa

Purification Method:

Antigen affinity purification

Recommended Dilutions:

WB 1:500-1:2000

IHC 1:20-1:200

IF/ICC 1:50-1:500

Applications

Tested Applications:

WB, IHC, IF/ICC, ELISA

Cited Applications:

WB

Species Specificity:

human, mouse, rat

Cited Species:

rat

Note-IHC: suggested antigen retrieval with TE buffer pH 9.0; (*) Alternatively, antigen retrieval may be performed with citrate buffer pH 6.0

Positive Controls:

WB : HEK-293 cells, siRNA cells

IHC : human skeletal muscle tissue,

IF/ICC : HepG2 cells,

Notable Publications

Author	Pubmed ID	Journal	Application
Yifen Shen	39235646	Mol Neurobiol	WB

Storage

Storage:

Store at -20°C. Stable for one year after shipment.

Storage Buffer:

PBS with 0.02% sodium azide and 50% glycerol pH 7.3.

Aliquoting is unnecessary for -20°C storage

*** 20ul sizes contain 0.1% BSA

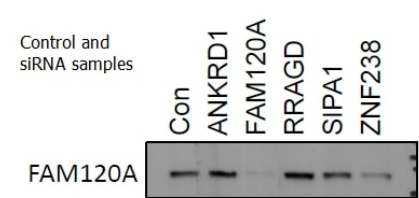
For technical support and original validation data for this product please contact:

T: 1 (888) 4PTGLAB (1-888-478-4522) (toll free in USA), or 1(312) 455-8498 (outside USA)

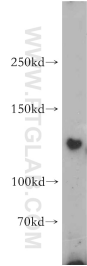
E: proteintech@ptglab.com
W: ptglab.com

This product is exclusively available under Proteintech Group brand and is not available to purchase from any other manufacturer.

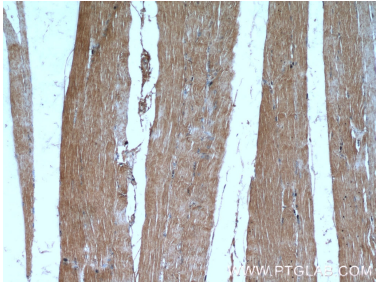
Selected Validation Data



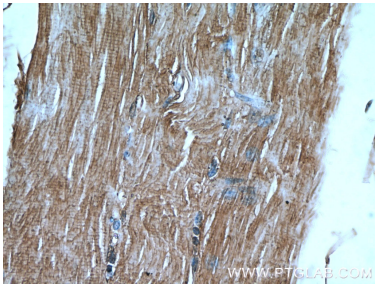
WB result of FAM120A antibody (21529-1-AP) with siRNA control and siRNA-FAM120A.



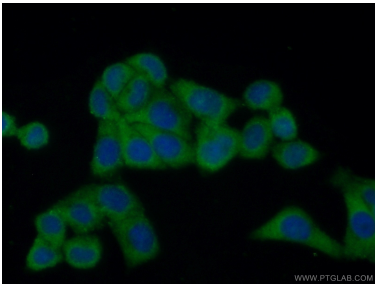
HEK-293 cells were subjected to SDS PAGE followed by western blot with 21529-1-AP (FAM120A antibody) at dilution of 1:500 incubated at room temperature for 1.5 hours.



Immunohistochemical analysis of paraffin-embedded human skeletal muscle using 21529-1-AP (FAM120A antibody) at dilution of 1:50 (under 10x lens).



Immunohistochemical analysis of paraffin-embedded human skeletal muscle using 21529-1-AP (FAM120A antibody) at dilution of 1:50 (under 40x lens).



Immunofluorescent analysis of (10% Formaldehyde) fixed HepG2 cells using 21529-1-AP (FAM120A antibody) at dilution of 1:50 and Alexa Fluor 488-conjugated Goat Anti-Rabbit IgG(H+L).