

For Research Use Only

ISM2 Polyclonal antibody

Catalog Number: 21540-1-AP



Basic Information

Catalog Number: 21540-1-AP	GenBank Accession Number: BC101020	Purification Method: Antigen affinity purification
Size: 150ul , Concentration: 400 ug/ml by Nanodrop and 260 ug/ml by Bradford method using BSA as the standard;	GeneID (NCBI): 145501	Recommended Dilutions: WB 1:500-1:1000
Source: Rabbit	UNIPROT ID: Q6H9L7	IHC 1:20-1:200
Isotype: IgG	Full Name: isthmin 2 homolog (zebrafish)	IF/ICC 1:20-1:200
Immunogen Catalog Number: AG16187	Calculated MW: 571 aa, 64 kDa	
	Observed MW: 65 kDa, 55 kDa	

Applications

Tested Applications: WB, IHC, IF/ICC, ELISA	Positive Controls:
Species Specificity: human, mouse	WB : L02 cells, mouse kidney tissue, mouse pancreas tissue, mouse skin tissue
Note-IHC: suggested antigen retrieval with TE buffer pH 9.0; (*) Alternatively, antigen retrieval may be performed with citrate buffer pH 6.0	IHC : human placenta tissue, human kidney tissue
	IF/ICC : L02 cells,

Storage

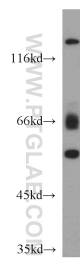
Storage:
Store at -20°C. Stable for one year after shipment.
Storage Buffer:
PBS with 0.02% sodium azide and 50% glycerol pH 7.3.
Aliquoting is unnecessary for -20°C storage

*** 20ul sizes contain 0.1% BSA

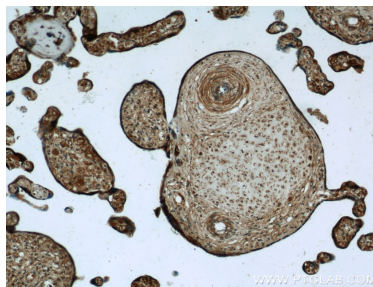
For technical support and original validation data for this product please contact:
T: 1 (888) 4PTGLAB (1-888-478-4522) (toll free in USA), or 1(312) 455-8498 (outside USA)
E: proteintech@ptglab.com
W: ptglab.com

This product is exclusively available under Proteintech Group brand and is not available to purchase from any other manufacturer.

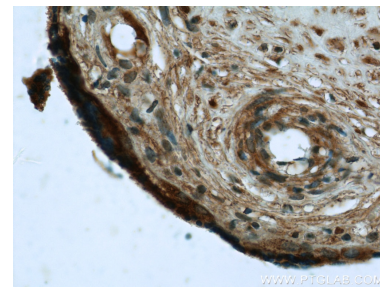
Selected Validation Data



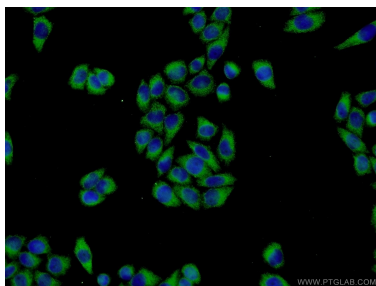
L02 cells were subjected to SDS PAGE followed by western blot with 21540-1-AP (ISM2 antibody) at dilution of 1:500 incubated at room temperature for 1.5 hours.



Immunohistochemical analysis of paraffin-embedded human placenta tissue slide using 21540-1-AP (ISM2 Antibody) at dilution of 1:50 (under 10x lens).



Immunohistochemical analysis of paraffin-embedded human placenta tissue slide using 21540-1-AP (ISM2 Antibody) at dilution of 1:50 (under 40x lens).



Immunofluorescent analysis of L02 cells using 21540-1-AP (ISM2 antibody) at dilution of 1:50 and Alexa Fluor 488-conjugated AffiniPure Goat Anti-Rabbit IgG(H+L).