

For Research Use Only

# CYP24A1 Polyclonal antibody

Catalog Number: 21582-1-AP

Featured Product

20 Publications



## Basic Information

### Catalog Number:

21582-1-AP

### Size:

150ul, Concentration: 500 ug/ml by Nanodrop;

### Source:

Rabbit

### Isotype:

IgG

### Immunogen Catalog Number:

AG16134

### GenBank Accession Number:

BC109083

### GeneID (NCBI):

1591

### UNIPROT ID:

Q07973

### Full Name:

cytochrome P450, family 24, subfamily A, polypeptide 1

### Calculated MW:

514 aa, 59 kDa

### Observed MW:

54-59 kDa

### Purification Method:

Antigen affinity purification

### Recommended Dilutions:

WB 1:500-1:1000

IP 0.5-4.0 ug for 1.0-3.0 mg of total protein lysate

IHC 1:20-1:200

## Applications

### Tested Applications:

WB, IHC, IP, ELISA

### Cited Applications:

WB, IHC

### Species Specificity:

human

### Cited Species:

human, mouse, rat

### Positive Controls:

WB: A549 cells, HeLa cells

IP: HeLa cells,

IHC: human kidney tissue, human prostate cancer tissue

**Note-IHC: suggested antigen retrieval with TE buffer pH 9.0; (\*) Alternatively, antigen retrieval may be performed with citrate buffer pH 6.0**

## Background Information

CYP24A1(1,25-dihydroxyvitamin D(3) 24-hydroxylase, mitochondrial) catalyzes the NADPH-dependent 24-hydroxylation of calcidiol (25-hydroxyvitamin D3) and 1-alpha,25-dihydroxyvitamin D3. Cholecalciferol is metabolised by the 25-hydroxylases (CYP2R1 and CYP27A1) in the liver, before 25-hydroxycholecalciferol (25(OH)D3) relocates to the circulation (PMID:20362668). The gene CYP24A1 has three isoforms, for the transit peptide "mitochondrial domain" removed, the MW of CYP24A1 will be 55-59 kDa, 47-51 kDa and 43 kDa. This antibody is specific to CYP24A1.

## Notable Publications

Author	Pubmed ID	Journal	Application
Thomas Knöpfel	28887454	Sci Rep	WB
Arezo Daryadel	31628396	Sci Rep	WB
Xue-Qi Chen	36255661	Curr Med Sci	WB

## Storage

### Storage:

Store at -20°C. Stable for one year after shipment.

### Storage Buffer:

PBS with 0.02% sodium azide and 50% glycerol pH 7.3.

Aliquoting is unnecessary for -20°C storage

\*\*\* 20ul sizes contain 0.1% BSA

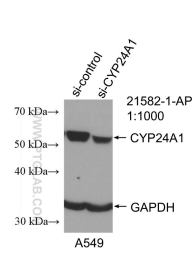
For technical support and original validation data for this product please contact:

T: 1 (888) 4PTGLAB (1-888-478-4522) (toll free in USA), or 1(312) 455-8498 (outside USA)

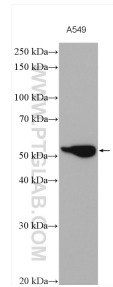
E: [proteintech@ptglab.com](mailto:proteintech@ptglab.com)  
W: [ptglab.com](http://ptglab.com)

This product is exclusively available under Proteintech Group brand and is not available to purchase from any other manufacturer.

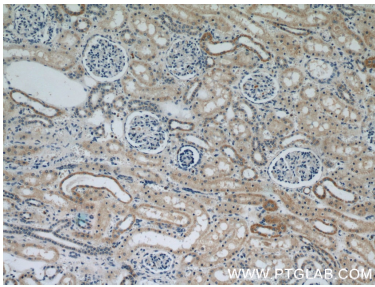
Selected Validation Data



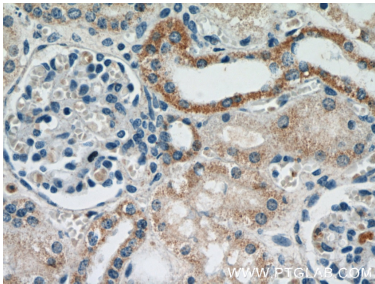
WB result of CYP24A1 antibody (21582-1-AP; 1:1000; incubated at room temperature for 1.5 hours) with sh-Control and sh-CYP24A1 transfected A549 cells.



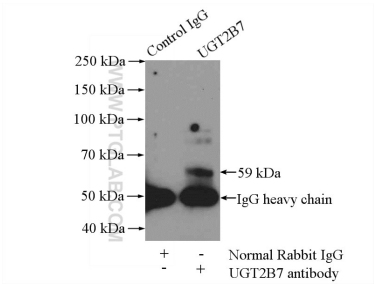
A549 cells were subjected to SDS PAGE followed by western blot with 21582-1-AP (CYP24A1 antibody) at dilution of 1:800 incubated at room temperature for 1.5 hours.



Immunohistochemical analysis of paraffin-embedded human kidney using 21582-1-AP (CYP24A1 antibody) at dilution of 1:50 (under 10x lens).



Immunohistochemical analysis of paraffin-embedded human kidney using 21582-1-AP (CYP24A1 antibody) at dilution of 1:50 (under 40x lens).



IP result of anti-CYP24A1 (IP:21582-1-AP, 4ug; Detection:21582-1-AP 1:300) with HeLa cells lysate 2800ug.