

For Research Use Only

# C7orf10 Polyclonal antibody

Catalog Number: 21589-1-AP

3 Publications



## Basic Information

### Catalog Number:

21589-1-AP

### Size:

150ul, Concentration: 350 ug/ml by Nanodrop and 173 ug/ml by Bradford method using BSA as the standard;

### Source:

Rabbit

### Isotype:

IgG

### Immunogen Catalog Number:

AG16159

### GenBank Accession Number:

BC098318

### GeneID (NCBI):

79783

### UNIPROT ID:

Q9HAC7

### Full Name:

chromosome 7 open reading frame 10

### Calculated MW:

471 aa, 51 kDa

### Observed MW:

48-55 kDa

### Purification Method:

Antigen affinity purification

### Recommended Dilutions:

WB: 1:1000-1:4000

IHC: 1:20-1:200

## Applications

### Tested Applications:

WB, IHC, ELISA

### Cited Applications:

WB

### Species Specificity:

human, mouse, rat

### Cited Species:

human, mouse

**Note-IHC: suggested antigen retrieval with TE buffer pH 9.0; (\*) Alternatively, antigen retrieval may be performed with citrate buffer pH 6.0**

### Positive Controls:

**WB** : mouse kidney tissue, mouse pancreas tissue, mouse skeletal muscle tissue, HepG2 cells, HEK-293 cells, rat kidney tissue

**IHC** : human kidney tissue, human pancreas tissue

## Background Information

C7orf10 is also named as SUGCT, DERP13 and belongs to the CaiB/BaiF CoA-transferase family. It may function as part of a multiunit enzyme complex (A), similar to the alpha-ketoglutarate dehydrogenase system, or as the second of two independent enzymes, the first of which decarboxylates alpha-ketoadipate to glutarate (B). This protein has 4 isoforms produced by alternative splicing with the molecular weight from 43 kDa to 51 kDa.

## Notable Publications

Author	Pubmed ID	Journal	Application
Joanna Niska-Blakie	31722069	Cell Mol Life Sci	WB
Adam C Richert	39990440	bioRxiv	WB
Scott P Allen	37251807	Front Aging Neurosci	WB

## Storage

### Storage:

Store at -20°C. Stable for one year after shipment.

### Storage Buffer:

PBS with 0.02% sodium azide and 50% glycerol, pH7.3

Aliquoting is unnecessary for -20°C storage

\*\*\* 20ul sizes contain 0.1% BSA

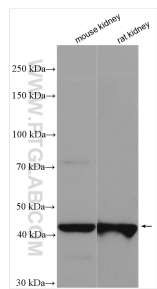
For technical support and original validation data for this product please contact:

T: 1 (888) 4PTGLAB (1-888-478-4522) (toll free in USA), or 1(312) 455-8498 (outside USA)

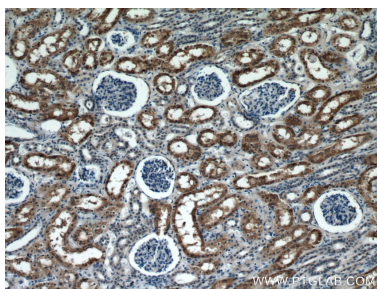
E: [proteintech@ptglab.com](mailto:proteintech@ptglab.com)  
W: [ptglab.com](http://ptglab.com)

This product is exclusively available under Proteintech Group brand and is not available to purchase from any other manufacturer.

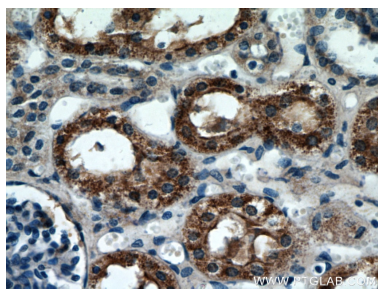
Selected Validation Data



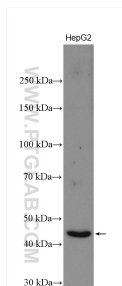
Various lysates were subjected to SDS PAGE followed by western blot with 21589-1-AP (C7orf10 antibody) at dilution of 1:2000 incubated at room temperature for 1.5 hours.



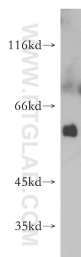
Immunohistochemical analysis of paraffin-embedded human kidney using 21589-1-AP (C7orf10 antibody) at dilution of 1:50 (under 10x lens).



Immunohistochemical analysis of paraffin-embedded human kidney using 21589-1-AP (C7orf10 antibody) at dilution of 1:50 (under 40x lens).



HepG2 cells were subjected to SDS PAGE followed by western blot with 21589-1-AP (C7orf10 antibody) at dilution of 1:1000 incubated at room temperature for 1.5 hours.



mouse skeletal muscle tissue were subjected to SDS PAGE followed by western blot with 21589-1-AP (C7orf10 antibody) at dilution of 1:500 incubated at room temperature for 1.5 hours.