

For Research Use Only

FHL2 Polyclonal antibody

Catalog Number: 21619-1-AP

Featured Product

13 Publications



Basic Information

Catalog Number:

21619-1-AP

Size:

150ul, Concentration: 500 ug/ml by Nanodrop;

Source:

Rabbit

Isotype:

IgG

Immunogen Catalog Number:

AG1378

GenBank Accession Number:

BC014397

GeneID (NCBI):

2274

UNIPROT ID:

Q14192

Full Name:

four and a half LIM domains 2

Calculated MW:

32 kDa

Observed MW:

32 kDa

Purification Method:

Antigen affinity purification

Recommended Dilutions:

WB 1:5000-1:50000

IP 0.5-4.0 ug for 1.0-3.0 mg of total protein lysate

IHC 1:1000-1:4000

IF/ICC 1:50-1:500

Applications

Tested Applications:

WB, IHC, IF/ICC, IP, ELISA

Cited Applications:

WB, IHC, IF, IP, CoIP

Species Specificity:

human, mouse, rat

Cited Species:

human, mouse

Note-IHC: suggested antigen retrieval with TE buffer pH 9.0; (*) Alternatively, antigen retrieval may be performed with citrate buffer pH 6.0

Positive Controls:

WB: HeLa cells, U2OS cells, hTERT-RPE1 cells, NIH/3T3 cells

IP: mouse skeletal muscle tissue,

IHC: human cervical cancer tissue, human skin cancer tissue, mouse kidney tissue, mouse ovary tissue, rat heart tissue, rat ovary tissue

IF/ICC: HeLa cells, A431 cells

Notable Publications

Author	Pubmed ID	Journal	Application
Fabiana Martino	36417487	Sci Transl Med	WB, CoIP
Raymond M Johnson	29158429	Infect Immun	WB
Yuangong Cao	33787085	Cancer Med	IP, WB

Storage

Storage:

Store at -20°C. Stable for one year after shipment.

Storage Buffer:

PBS with 0.02% sodium azide and 50% glycerol pH 7.3.

Aliquoting is unnecessary for -20°C storage

*** 20ul sizes contain 0.1% BSA

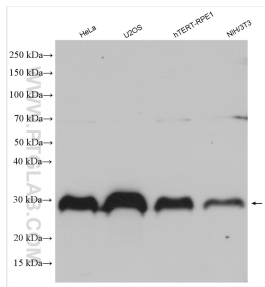
For technical support and original validation data for this product please contact:

T: 1 (888) 4PTGLAB (1-888-478-4522) (toll free in USA), or 1(312) 455-8498 (outside USA)

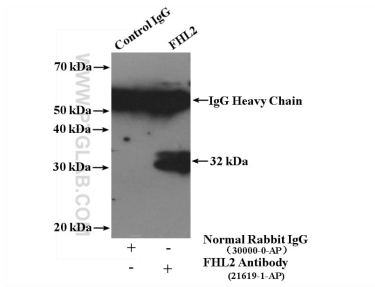
E: proteintech@ptglab.com
W: ptglab.com

This product is exclusively available under Proteintech Group brand and is not available to purchase from any other manufacturer.

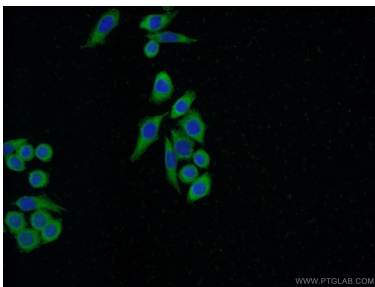
Selected Validation Data



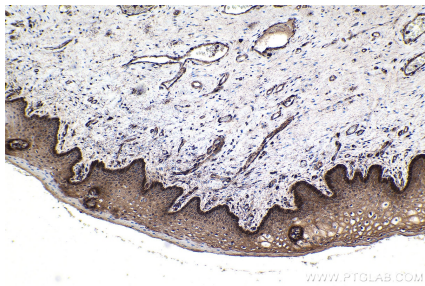
Various lysates were subjected to SDS PAGE followed by western blot with 21619-1-AP (FHL2 antibody) at dilution of 1:10000 incubated at room temperature for 1.5 hours.



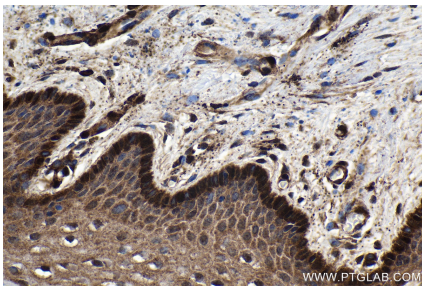
IP result of anti-FHL2 (IP:21619-1-AP, 4ug; Detection:21619-1-AP 1:1000) with mouse skeletal muscle tissue lysate 2200ug.



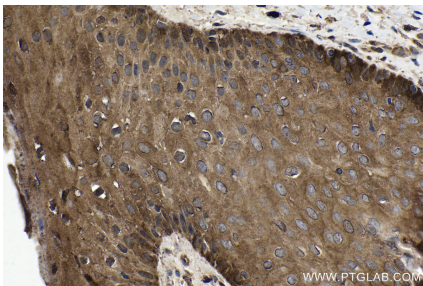
Immunofluorescent analysis of (-20°C Ethanol) fixed HeLa cells using 21619-1-AP (FHL2 antibody) at dilution of 1:50 and Alexa Fluor 488-conjugated AffiniPure Goat Anti-Rabbit IgG(H+L).



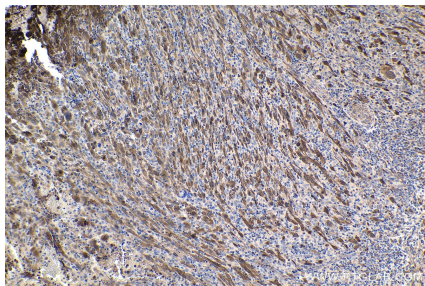
Immunohistochemical analysis of paraffin-embedded human cervical cancer tissue slide using 21619-1-AP (FHL2 antibody) at dilution of 1:2000 (under 10x lens). Heat mediated antigen retrieval with Tris-EDTA buffer (pH 9.0).



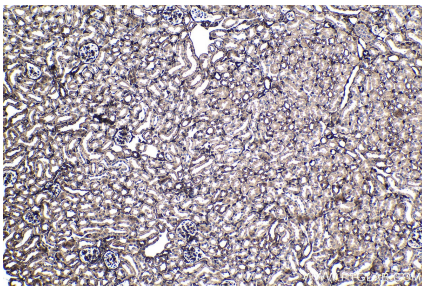
Immunohistochemical analysis of paraffin-embedded human cervical cancer tissue slide using 21619-1-AP (FHL2 antibody) at dilution of 1:2000 (under 40x lens). Heat mediated antigen retrieval with Tris-EDTA buffer (pH 9.0).



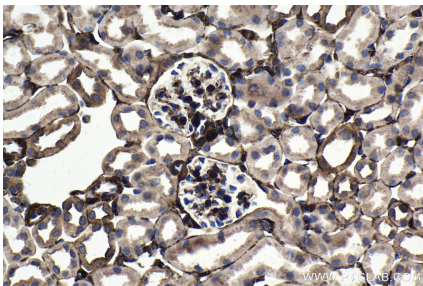
Immunohistochemical analysis of paraffin-embedded human skin cancer tissue slide using 21619-1-AP (FHL2 antibody) at dilution of 1:2000 (under 10x lens). Heat mediated antigen retrieval with Tris-EDTA buffer (pH 9.0).



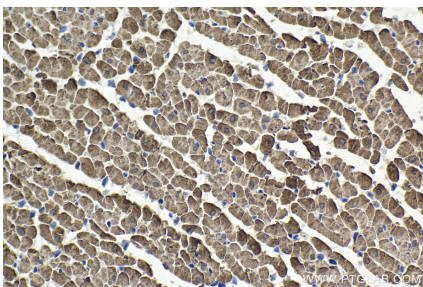
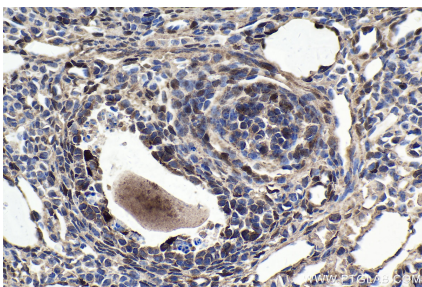
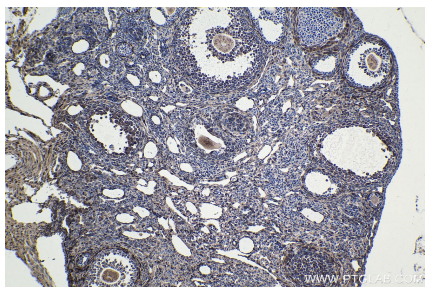
Immunohistochemical analysis of paraffin-embedded human skin cancer tissue slide using 21619-1-AP (FHL2 antibody) at dilution of 1:2000 (under 40x lens). Heat mediated antigen retrieval with Tris-EDTA buffer (pH 9.0).



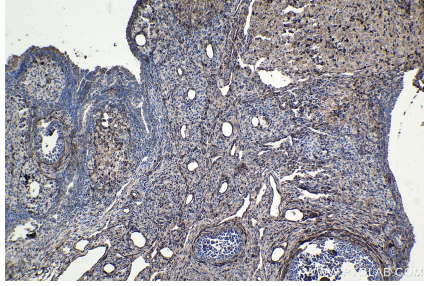
Immunohistochemical analysis of paraffin-embedded mouse kidney tissue slide using 21619-1-AP (FHL2 antibody) at dilution of 1:2000 (under 10x lens). Heat mediated antigen retrieval with Tris-EDTA buffer (pH 9.0).



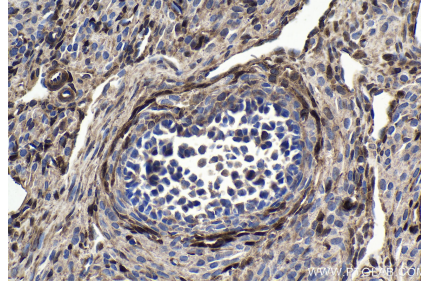
Immunohistochemical analysis of paraffin-embedded mouse kidney tissue slide using 21619-1-AP (FHL2 antibody) at dilution of 1:2000 (under 40x lens). Heat mediated antigen retrieval with Tris-EDTA buffer (pH 9.0).



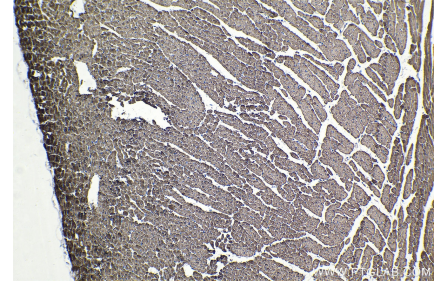
Immunohistochemical analysis of paraffin-embedded mouse ovary tissue slide using 21619-1-AP (FHL2 antibody) at dilution of 1:2000 (under 10x lens). Heat mediated antigen retrieval with Tris-EDTA buffer (pH 9.0).



Immunohistochemical analysis of paraffin-embedded mouse ovary tissue slide using 21619-1-AP (FHL2 antibody) at dilution of 1:2000 (under 40x lens). Heat mediated antigen retrieval with Tris-EDTA buffer (pH 9.0).



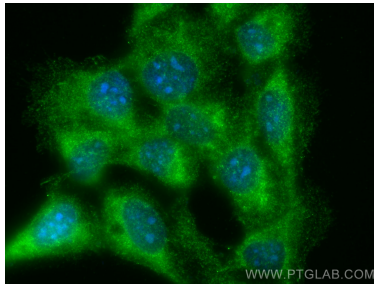
Immunohistochemical analysis of paraffin-embedded rat heart tissue slide using 21619-1-AP (FHL2 antibody) at dilution of 1:2000 (under 40x lens). Heat mediated antigen retrieval with Tris-EDTA buffer (pH 9.0).



Immunohistochemical analysis of paraffin-embedded rat ovary tissue slide using 21619-1-AP (FHL2 antibody) at dilution of 1:2000 (under 10x lens). Heat mediated antigen retrieval with Tris-EDTA buffer (pH 9.0).

Immunohistochemical analysis of paraffin-embedded rat ovary tissue slide using 21619-1-AP (FHL2 antibody) at dilution of 1:2000 (under 40x lens). Heat mediated antigen retrieval with Tris-EDTA buffer (pH 9.0).

Immunohistochemical analysis of paraffin-embedded rat heart tissue slide using 21619-1-AP (FHL2 antibody) at dilution of 1:2000 (under 10x lens). Heat mediated antigen retrieval with Tris-EDTA buffer (pH 9.0).



Immunofluorescent analysis of (-20°C Methanol) fixed A431 cells using FHL2 antibody (21619-1-AP) at dilution of 1:500 and CoraLite®488-Conjugated AffiniPure Goat Anti-Rabbit IgG(H+L).