

For Research Use Only

GPBP1 Polyclonal antibody

Catalog Number: 21622-1-AP

Featured Product

1 Publications



Basic Information

| | | |
|---|---|--|
| Catalog Number: 21622-1-AP | GenBank Accession Number: BC000267 | Purification Method: Antigen affinity purification |
| Size: 150ul, Concentration: 233 µg/ml by Nanodrop and 233 µg/ml by Bradford method using BSA as the standard; | GeneID (NCBI): 65056 | Recommended Dilutions: WB 1:500-1:2000 IHC 1:20-1:200 |
| Source: Rabbit | Full Name: GC-rich promoter binding protein 1 | |
| Isotype: IgG | Calculated MW: 473 aa, 53 kDa | |
| Immunogen Catalog Number: AG14877 | Observed MW: 45 kDa | |

Applications

| | |
|--|--|
| Tested Applications: IHC, WB, ELISA | Positive Controls: WB : HepG2 cells, L02 cells |
| Cited Applications: IP, WB | IHC : human small intestine tissue, human testis tissue |
| Species Specificity: human, mouse, rat | |
| Cited Species: mouse | |

Note-IHC: suggested antigen retrieval with TE buffer pH 9.0; (*) Alternatively, antigen retrieval may be performed with citrate buffer pH 6.0

Background Information

Notable Publications

| Author | Pubmed ID | Journal | Application |
|-----------------|-----------|-------------|-------------|
| Liang-Liang Fan | 35596061 | Exp Mol Med | WB,IP |

Storage

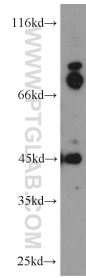
Storage:
Store at -20°C. Stable for one year after shipment.
Storage Buffer:
PBS with 0.02% sodium azide and 50% glycerol pH 7.3.
Aliquoting is unnecessary for -20°C storage

*** 20ul sizes contain 0.1% BSA

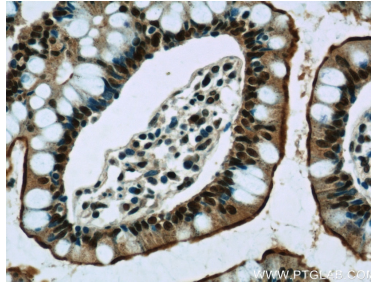
For technical support and original validation data for this product please contact:
T: 1 (888) 4PTGLAB (1-888-478-4522) (toll free in USA), or 1(312) 455-8498 (outside USA)
E: proteintech@ptglab.com
W: ptglab.com

This product is exclusively available under Proteintech Group brand and is not available to purchase from any other manufacturer.

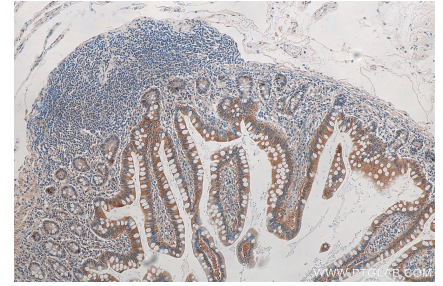
Selected Validation Data



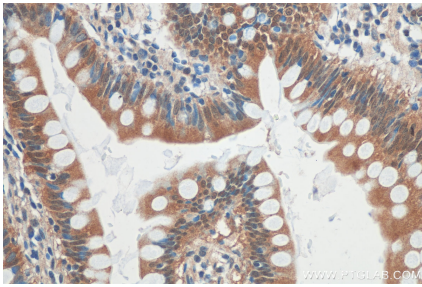
HepG2 cells were subjected to SDS PAGE followed by western blot with 21622-1-AP (GPBP1 antibody) at dilution of 1:500 incubated at room temperature for 1.5 hours.



Immunohistochemical analysis of paraffin-embedded human small intestine slide using 21622-1-AP (GPBP1 Antibody) at dilution of 1:50.



Immunohistochemical analysis of paraffin-embedded human small intestine tissue slide using 21622-1-AP (GPBP1 antibody) at dilution of 1:300 (under 10x lens).



Immunohistochemical analysis of paraffin-embedded human small intestine tissue slide using 21622-1-AP (GPBP1 antibody) at dilution of 1:300 (under 40x lens).