

For Research Use Only

RPLP1 Polyclonal antibody

Catalog Number: 21636-1-AP

Featured Product

6 Publications



Basic Information

Catalog Number:

21636-1-AP

Size:

150ul, Concentration: 400 ug/ml by Nanodrop;

Source:

Rabbit

Isotype:

IgG

Immunogen Catalog Number:

AG16268

GenBank Accession Number:

BC003369

GeneID (NCBI):

6176

UNIPROT ID:

P05386

Full Name:

ribosomal protein, large, P1

Calculated MW:

12 kDa

Observed MW:

15-20 kDa

Purification Method:

Antigen affinity purification

Recommended Dilutions:

WB 1:500-1:2000

IHC 1:50-1:500

IF/ICC 1:50-1:500

Applications

Tested Applications:

WB, IHC, IF/ICC, ELISA

Cited Applications:

WB, IHC, IF

Species Specificity:

human, mouse

Cited Species:

human, mouse, pig

Note-IHC: suggested antigen retrieval with TE buffer pH 9.0; (*) Alternatively, antigen retrieval may be performed with citrate buffer pH 6.0

Positive Controls:

WB : HeLa cells, HepG2 cells

IHC : human prostate cancer tissue,

IF/ICC : HeLa cells,

Background Information

60S acidic ribosomal protein P1 (RRP1) is a 114 amino acid protein, which belongs to the ribosomal protein L12P family. RRP1 plays an important role in the elongation step of protein synthesis. The molecular weight of modified RRP1 is 15-20 kDa.

Notable Publications

Author	Pubmed ID	Journal	Application
Zahraa Alali	31899515	Mol Hum Reprod	WB
Natalia Khalatyan	39786991	Cell Rep	WB
Weijing Yang	38906865	Nat Commun	WB,IF

Storage

Storage:

Store at -20°C. Stable for one year after shipment.

Storage Buffer:

PBS with 0.02% sodium azide and 50% glycerol pH 7.3.

Aliquoting is unnecessary for -20°C storage

*** 20ul sizes contain 0.1% BSA

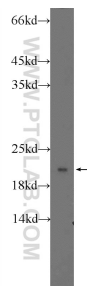
For technical support and original validation data for this product please contact:

T: 1 (888) 4PTGLAB (1-888-478-4522) (toll free in USA), or 1(312) 455-8498 (outside USA)

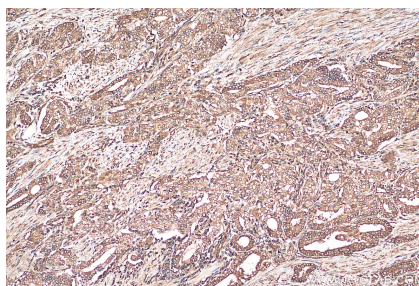
E: proteintech@ptglab.com
W: ptglab.com

This product is exclusively available under Proteintech Group brand and is not available to purchase from any other manufacturer.

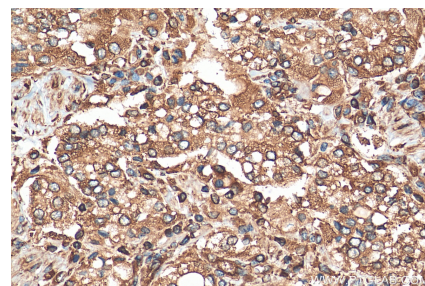
Selected Validation Data



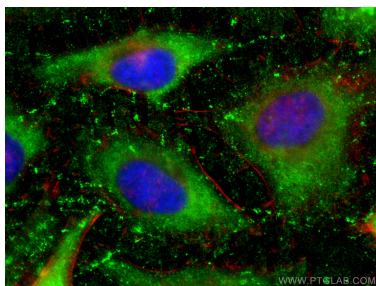
HeLa cells were subjected to SDS PAGE followed by western blot with 21636-1-AP (RPLP1 Antibody) at dilution of 1:1000 incubated at room temperature for 1.5 hours.



Immunohistochemical analysis of paraffin-embedded human prostate cancer tissue slide using 21636-1-AP (RPLP1 antibody) at dilution of 1:200 (under 10x lens). Heat mediated antigen retrieval with Tris-EDTA buffer (pH 9.0).



Immunohistochemical analysis of paraffin-embedded human prostate cancer tissue slide using 21636-1-AP (RPLP1 antibody) at dilution of 1:200 (under 40x lens). Heat mediated antigen retrieval with Tris-EDTA buffer (pH 9.0).



Immunofluorescent analysis of (-20°C Ethanol) fixed HeLa cells using RPLP1 antibody (21636-1-AP) at dilution of 1:200 and CoraLite®488-Conjugated Goat Anti-Rabbit IgG(H+L) (SA00013-2), CL594-phalloidin (red).