

For Research Use Only

SIP1 Polyclonal antibody

Catalog Number: 21672-1-AP

4 Publications



Basic Information

Catalog Number:

21672-1-AP

Size:

150ul, Concentration: 700 ug/ml by Nanodrop and 300 ug/ml by Bradford method using BSA as the standard;

Source:

Rabbit

Isotype:

IgG

Immunogen Catalog Number:

AG16500

GenBank Accession Number:

BC104968

GeneID (NCBI):

8487

UNIPROT ID:

O14893

Full Name:

survival of motor neuron protein interacting protein 1

Calculated MW:

280 aa, 32 kDa

Observed MW:

32-35 kDa

Purification Method:

Antigen affinity purification

Recommended Dilutions:

WB 1:500-1:2000

IP 0.5-4.0 ug for 1.0-3.0 mg of total protein lysate

Applications

Tested Applications:

WB, IP, ELISA

Cited Applications:

WB

Species Specificity:

human, mouse, rat

Cited Species:

human, mouse

Positive Controls:

WB : HepG2 cells, HeLa cells, rat brain tissue

IP : HepG2 cells,

Notable Publications

Author	Pubmed ID	Journal	Application
Yuhong Zhang	34628513	J Mol Med (Berl)	WB
Alessia Mirra	28515487	Sci Rep	WB
Yu-Shi Wang	32244350	Biomolecules	WB

Storage

Storage:

Store at -20°C. Stable for one year after shipment.

Storage Buffer:

PBS with 0.02% sodium azide and 50% glycerol pH 7.3.

Aliquoting is unnecessary for -20°C storage

*** 20ul sizes contain 0.1% BSA

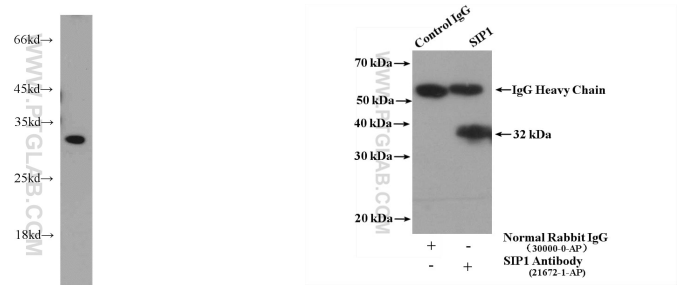
For technical support and original validation data for this product please contact:

T: 1 (888) 4PTGLAB (1-888-478-4522) (toll free in USA), or 1(312) 455-8498 (outside USA)

E: proteintech@ptglab.com
W: ptglab.com

This product is exclusively available under Proteintech Group brand and is not available to purchase from any other manufacturer.

Selected Validation Data



HepG2 cells were subjected to SDS PAGE followed by western blot with 21672-1-AP (SIP1 antibody) at dilution of 1:500 incubated at room temperature for 1.5 hours.

IP result of anti-SIP1 (IP:21672-1-AP, 4ug; Detection:21672-1-AP 1:500) with HepG2 cells lysate 1000ug.