

For Research Use Only

UQCRC1 Polyclonal antibody

Catalog Number: 21705-1-AP

Featured Product

44 Publications



Basic Information

Catalog Number:

21705-1-AP

Size:

150ul, Concentration: 200 ug/ml by Nanodrop and 147 ug/ml by Bradford method using BSA as the standard;

Source:

Rabbit

Isotype:

IgG

Immunogen Catalog Number:

AG16322

GenBank Accession Number:

BC009586

GeneID (NCBI):

7384

UNIPROT ID:

P31930

Full Name:

ubiquinol-cytochrome c reductase core protein I

Calculated MW:

480 aa, 53 kDa

Observed MW:

45 kDa

Purification Method:

Antigen affinity purification

Recommended Dilutions:

WB: 1:1000-1:8000

IP: 0.5-4.0 ug for 1.0-3.0 mg of total protein lysate

IHC: 1:100-1:1000

IF/ICC: 1:50-1:500

Applications

Tested Applications:

WB, IHC, IF/ICC, IP, ELISA

Cited Applications:

WB, IHC, IF

Species Specificity:

human, mouse, rat

Cited Species:

human, mouse, rat

Note-IHC: suggested antigen retrieval with TE buffer pH 9.0; (*) Alternatively, antigen retrieval may be performed with citrate buffer pH 6.0

Positive Controls:

WB: HeLa cells, human brain tissue, human skeletal muscle tissue, mouse skeletal muscle tissue, human heart tissue, mouse large intestine tissue, mouse kidney tissue, mouse spleen tissue, L02 cells, mouse liver tissue, rat liver tissue, Jurkat cells

IP: HeLa cells,

IHC: human normal colon, human colon tissue

IF/ICC: HepG2 cells,

Background Information

UQCRC1(Cytochrome b-c1 complex subunit 1, mitochondrial), also named as QCR1 and UQCRC1, is a ubunit of the cytochrome bc1 complex (complex III) of the mitochondrial respiratory chain, may mediate the formation of the complex between cytochromes c and c1. The gene encodes a 53 kDa protein with a 34 amino acids transit peptide. It is associated with apoptosis or inhibition of cancer cell growth.

Notable Publications

Author	Pubmed ID	Journal	Application
Tetsushi Hirano	34520793	Toxicol Appl Pharmacol	WB
DeLong Yin	34497154	Aging (Albany NY)	WB
Xiao-Hong Deng	30315253	Acta Pharmacol Sin	WB

Storage

Storage:

Store at -20°C. Stable for one year after shipment.

Storage Buffer:

PBS with 0.02% sodium azide and 50% glycerol, pH7.3

Aliquoting is unnecessary for -20°C storage

*** 20ul sizes contain 0.1% BSA

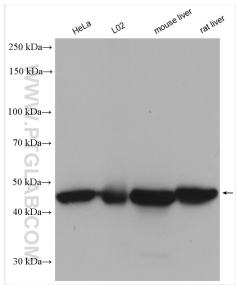
For technical support and original validation data for this product please contact:

T: 1 (888) 4PTGLAB (1-888-478-4522) (toll free in USA), or 1(312) 455-8498 (outside USA)

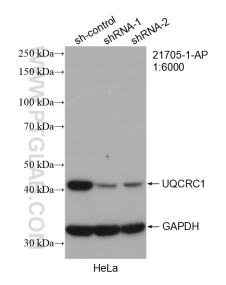
E: proteintech@ptglab.com
W: ptglab.com

This product is exclusively available under Proteintech Group brand and is not available to purchase from any other manufacturer.

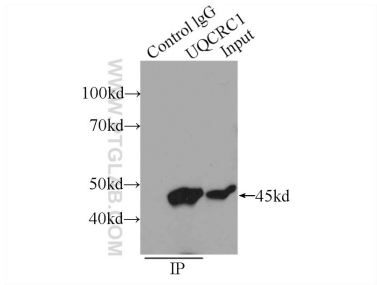
Selected Validation Data



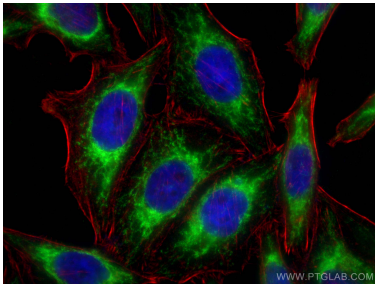
Various lysates were subjected to SDS PAGE followed by western blot with 21705-1-AP (UQCRC1 antibody) at dilution of 1:4000 incubated at room temperature for 1.5 hours.



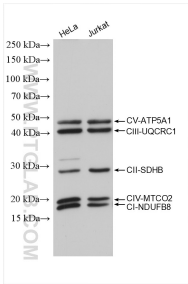
WB result of UQCRC1 antibody (21705-1-AP; 1:6000; incubated at room temperature for 1.5 hours) with sh-Control and sh-UQCRC1 transfected HeLa cells.



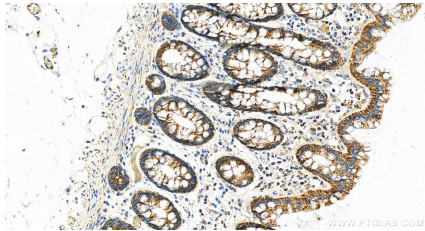
IP result of anti-UQCRC1 (IP:21705-1-AP, 4ug; Detection:21705-1-AP 1:500) with HeLa cells lysate 1600ug.



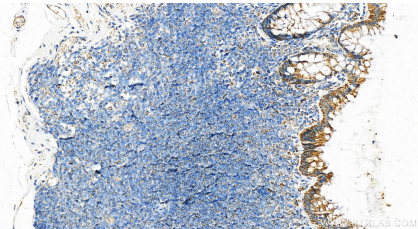
Immunofluorescent analysis of (-20°C Ethanol) fixed HepG2 cells using UQCRC1 antibody (21705-1-AP) at dilution of 1:200 and CoraLite®488-Conjugated AffiniPure Goat Anti-Rabbit IgG(H+L), CL594-phalloidin (red).



Various lysates were subjected to SDS PAGE followed by western blot with PK30006 (OXPHOS Cocktail (Human recommended)) at dilution of 1:4000 incubated at room temperature for 1 hours.



Immunohistochemical analysis of paraffin-embedded human normal colon slide using 21705-1-AP (UQCRC1 antibody) at dilution of 1:800 (under 20x lens). Heat mediated antigen retrieval with Tris-EDTA buffer (pH 9.0).



Immunohistochemical analysis of paraffin-embedded human normal colon slide using 21705-1-AP (UQCRC1 antibody) at dilution of 1:800 (under 20x lens). Heat mediated antigen retrieval with Tris-EDTA buffer (pH 9.0).