

For Research Use Only

# APAF1 Polyclonal antibody

Catalog Number: 21710-1-AP

Featured Product

44 Publications



## Basic Information

### Catalog Number:

21710-1-AP

### Size:

150ul, Concentration: 153 µg/ml by Bradford method using BSA as the standard;

### Source:

Rabbit

### Isotype:

IgG

### Immunogen Catalog Number:

AG16336

### GenBank Accession Number:

BC136532

### GeneID (NCBI):

317

### UNIPROT ID:

O14727

### Full Name:

apoptotic peptidase activating factor 1

### Calculated MW:

1248 aa, 142 kDa

### Observed MW:

130-142 kDa

### Purification Method:

Antigen affinity purification

### Recommended Dilutions:

WB 1:500-1:2000

IP 0.5-4.0 µg for 1.0-3.0 mg of total protein lysate

IHC 1:50-1:500

IF/ICC 1:20-1:200

## Applications

### Tested Applications:

WB, IP, IF, IHC, ELISA

### Cited Applications:

WB, IHC, IF

### Species Specificity:

human, rat

### Cited Species:

human, mouse, rat

**Note-IHC: suggested antigen retrieval with TE buffer pH 9.0; (\*) Alternatively, antigen retrieval may be performed with citrate buffer pH 6.0**

### Positive Controls:

WB : HEK-293 cells, A549 cells, COLO 320 cells

IP : HEK-293 cells,

IHC : human heart tissue,

IF/ICC : A549 cells,

## Background Information

APAF1, also named as Apoptotic protease-activating factor 1 or KIAA0413, is a 1248 amino acid protein, which contains one CARD domain, contains one NB-ARC domain and Contains fifteen WD repeats. APAF1 localizes in the cytoplasm and is widely expressed in many tissues. Highest levels of expression is in adult spleen, peripheral blood leukocytes, in fetal brain, kidney and lung. Oligomeric APAF1 mediates the cytochrome c-dependent autocatalytic activation of pro-caspase-9 (Apaf-3), leading to the activation of caspase-3 and apoptosis.

## Notable Publications

Author	Pubmed ID	Journal	Application
Xiaoman Chen	30207732	Mol Pharm	WB
Jinghua Du	29158819	Theranostics	WB
Hongtao Duan	29151915	Oncol Lett	WB

## Storage

### Storage:

Store at -20°C. Stable for one year after shipment.

### Storage Buffer:

PBS with 0.02% sodium azide and 50% glycerol pH 7.3.

Aliquoting is unnecessary for -20°C storage

\*\*\* 20ul sizes contain 0.1% BSA

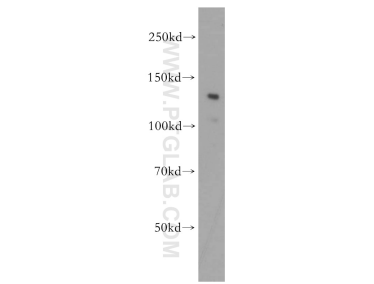
For technical support and original validation data for this product please contact:

T: 1 (888) 4PTGLAB (1-888-478-4522) (toll free in USA), or 1(312) 455-8498 (outside USA)

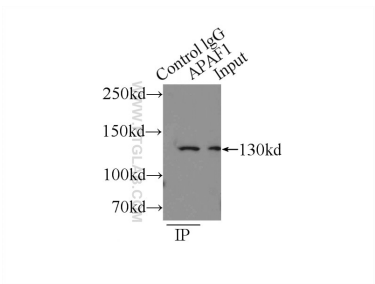
E: proteintech@ptglab.com  
W: ptglab.com

This product is exclusively available under Proteintech Group brand and is not available to purchase from any other manufacturer.

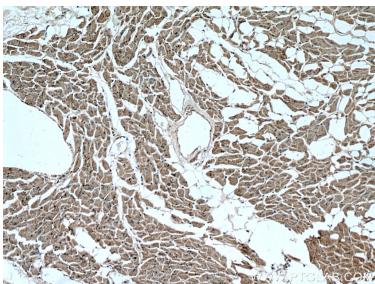
Selected Validation Data



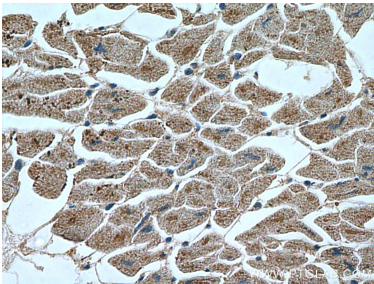
HEK-293 cells were subjected to SDS PAGE followed by western blot with 21710-1-AP (APAF1 antibody) at dilution of 1:500 incubated at room temperature for 1.5 hours.



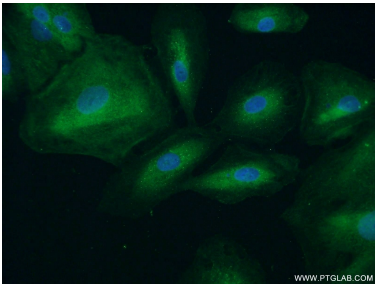
IP result of anti-APAF1 (IP:21710-1-AP, 4ug; Detection:21710-1-AP 1:500) with HEK-293 cells lysate 2000ug.



Immunohistochemical analysis of paraffin-embedded human heart tissue slide using 21710-1-AP (APAF1 Antibody) at dilution of 1:200 (under 10x lens).



Immunohistochemical analysis of paraffin-embedded human heart tissue slide using 21710-1-AP (APAF1 Antibody) at dilution of 1:200 (under 40x lens).



Immunofluorescent analysis of A549 cells using 21710-1-AP (APAF1 antibody) at dilution of 1:50 and Alexa Fluor 488-conjugated AffiniPure Goat Anti-Rabbit IgG(H+L).