

For Research Use Only

CYP2A6 Polyclonal antibody

Catalog Number: 21721-1-AP

6 Publications



Basic Information

Catalog Number:

21721-1-AP

Size:

150ul, Concentration: 400 ug/ml by Nanodrop and 300 ug/ml by Bradford method using BSA as the standard;

Source:

Rabbit

Isotype:

IgG

Immunogen Catalog Number:

AG16377

GenBank Accession Number:

BC096253

GeneID (NCBI):

1548

UNIPROT ID:

P11509

Full Name:

cytochrome P450, family 2, subfamily A, polypeptide 6

Calculated MW:

494 aa, 57 kDa

Observed MW:

50 kDa

Purification Method:

Antigen affinity purification

Recommended Dilutions:

WB 1:2000-1:10000

IHC 1:50-1:500

Applications

Tested Applications:

WB, IHC, ELISA

Cited Applications:

WB

Species Specificity:

human, mouse, rat

Cited Species:

human, mouse

Note-IHC: suggested antigen retrieval with TE buffer pH 9.0; (*) Alternatively, antigen retrieval may be performed with citrate buffer pH 6.0

Positive Controls:

WB: mouse liver tissue, HepG2 cells, mouse lung tissue, rat liver tissue

IHC: human liver tissue, human liver cancer tissue

Notable Publications

Author	Pubmed ID	Journal	Application
Ashley A Untereiner	29061341	Biochem Pharmacol	WB
Shotaro Uehara	35416115	Xenobiotica	WB
Yuya Yoshida	38522403	Biochem Biophys Res Commun	

Storage

Storage:

Store at -20°C. Stable for one year after shipment.

Storage Buffer:

PBS with 0.02% sodium azide and 50% glycerol pH 7.3.

Aliquoting is unnecessary for -20°C storage

*** 20ul sizes contain 0.1% BSA

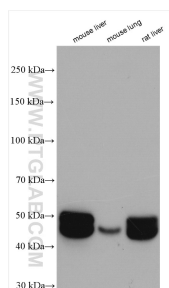
For technical support and original validation data for this product please contact:

T: 1 (888) 4PTGLAB (1-888-478-4522) (toll free in USA), or 1(312) 455-8498 (outside USA)

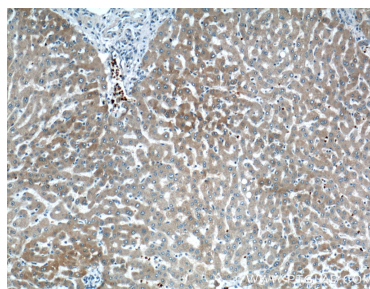
E: proteintech@ptglab.com
W: ptglab.com

This product is exclusively available under Proteintech Group brand and is not available to purchase from any other manufacturer.

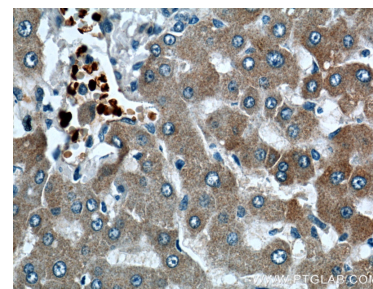
Selected Validation Data



Various lysates were subjected to SDS PAGE followed by western blot with 21721-1-AP (CYP2A6 antibody) at dilution of 1:5000 incubated at room temperature for 1.5 hours.



Immunohistochemical analysis of paraffin-embedded human liver tissue slide using 21721-1-AP (CYP2A6 Antibody) at dilution of 1:200 (under 10x lens).



Immunohistochemical analysis of paraffin-embedded human liver tissue slide using 21721-1-AP (CYP2A6 Antibody) at dilution of 1:200 (under 40x lens).