

For Research Use Only

RASSF7 Polyclonal antibody

Catalog Number: 21753-1-AP



Basic Information

Catalog Number: 21753-1-AP	GenBank Accession Number: BC106921	Purification Method: Antigen affinity purification
Size: 150ul , Concentration: 400 µg/ml by Nanodrop;	GeneID (NCBI): 8045	Recommended Dilutions: WB 1:500-1:1000 IHC 1:50-1:500
Source: Rabbit	Full Name: Ras association (RalGDS/AF-6) domain family (N-terminal) member 7	
Isotype: IgG	Calculated MW: 373 aa, 40 kDa	
Immunogen Catalog Number: AG16123	Observed MW: 40 kDa	

Applications

Tested Applications: IHC, WB, ELISA	Positive Controls:
Species Specificity: human, Rat	WB : HL-60 cells, HepG2 cells, PC-12 cells
Note-IHC: suggested antigen retrieval with TE buffer pH 9.0; (*) Alternatively, antigen retrieval may be performed with citrate buffer pH 6.0	IHC : human lung cancer tissue, human thyroid cancer tissue

Background Information

RASSF7, previously known as HRC1 (HRAS1 cluster 1) and C11orf13, is a member of the N-terminal RASSF family. RASSF7 protein localises to the centrosome and plays a key role in mitosis. RASSF7 is expressed in a broad range of different cell types and that this expression could be enhanced following exposure to hypoxia. RASSF7 has three isoforms with the MW 40 kDa, 36 kDa and 35 kDa.

Storage

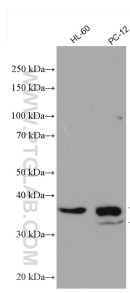
Storage:
Store at -20°C. Stable for one year after shipment.
Storage Buffer:
PBS with 0.02% sodium azide and 50% glycerol pH 7.3.
Aliquoting is unnecessary for -20°C storage

*** 20ul sizes contain 0.1% BSA

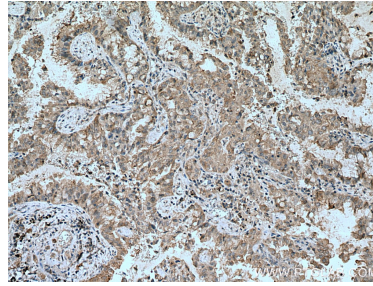
For technical support and original validation data for this product please contact:
T: 1 (888) 4PTGLAB (1-888-478-4522) (toll free in USA), or 1(312) 455-8498 (outside USA)
E: proteintech@ptglab.com
W: ptglab.com

This product is exclusively available under Proteintech Group brand and is not available to purchase from any other manufacturer.

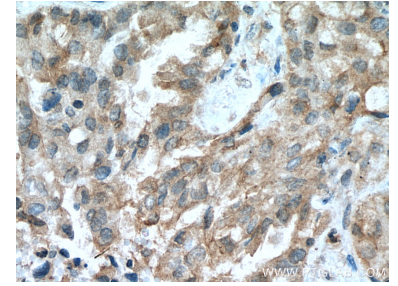
Selected Validation Data



Various lysates were subjected to SDS PAGE followed by western blot with 21753-1-AP (RASSF7 antibody) at dilution of 1:800 incubated at room temperature for 1.5 hours.



Immunohistochemical analysis of paraffin-embedded human lung cancer tissue slide using 21753-1-AP (RASSF7 antibody) at dilution of 1:200 (under 10x lens). Heat mediated antigen retrieval with Tris-EDTA buffer (pH 9.0).



Immunohistochemical analysis of paraffin-embedded human lung cancer tissue slide using 21753-1-AP (RASSF7 antibody) at dilution of 1:200 (under 40x lens). Heat mediated antigen retrieval with Tris-EDTA buffer (pH 9.0).