

For Research Use Only

LCE1B Polyclonal antibody

Catalog Number: 21771-1-AP



Basic Information

Catalog Number: 21771-1-AP	GenBank Accession Number: BC104232	Purification Method: Antigen affinity purification
Size: 150ul , Concentration: 400 µg/ml by Nanodrop and 240 µg/ml by Bradford method using BSA as the standard;	GeneID (NCBI): 353132	Recommended Dilutions: WB 1:500-1:2000 IHC 1:20-1:200 IF 1:20-1:200
Source: Rabbit	Full Name: late cornified envelope 1B	
Isotype: IgG	Calculated MW: 118 aa, 12 kDa	
Immunogen Catalog Number: AG16442	Observed MW: 10-12 kDa	

Applications

Tested Applications: IF, IHC, WB, ELISA	Positive Controls:
Species Specificity: human, mouse, rat	WB: A375 cells, mouse skin tissue, rat skin tissue
Note-IHC: <i>suggested antigen retrieval with TE buffer pH 9.0; (*) Alternatively, antigen retrieval may be performed with citrate buffer pH 6.0</i>	IHC: human skin tissue, human oesophagus tissue
	IF: A375 cells,

Background Information

Human LCE1B (Late cornified envelope protein 1B), also named late envelope protein 2 (LEP2), is located at human Chromosome1q21 which contains multiple LCE clusters. LCE1B gene is predicated to encode a 118-aa protein, and is currently evidenced at transcript level. Its expression was skin-specific and was readily detected in adult trunk skin, adult arm skin, fetal skin, penial skin, vulva, esophagus and tongue (PMID: 15854049). LCE genes respond to environmental stimuli such as calcium levels and ultraviolet (UV) light, however, LCE groups have distinct functions (PMID: 15854049).

Storage

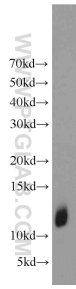
Storage:
Store at -20°C. Stable for one year after shipment.
Storage Buffer:
PBS with 0.02% sodium azide and 50% glycerol pH 7.3.
Aliquoting is unnecessary for -20°C storage

***** 20ul sizes contain 0.1% BSA**

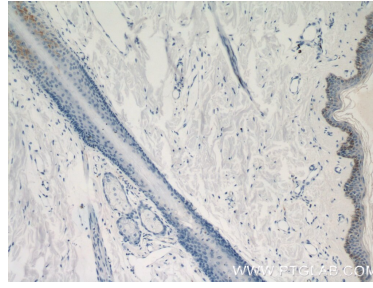
For technical support and original validation data for this product please contact:
T: 1 (888) 4PTGLAB (1-888-478-4522) (toll free in USA), or 1(312) 455-8498 (outside USA) E: proteintech@ptglab.com W: ptglab.com

This product is exclusively available under Proteintech Group brand and is not available to purchase from any other manufacturer.

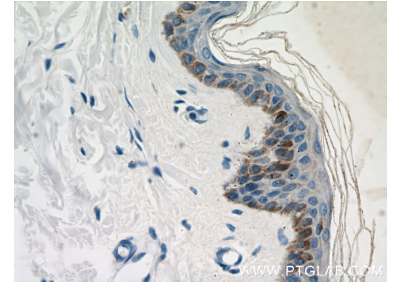
Selected Validation Data



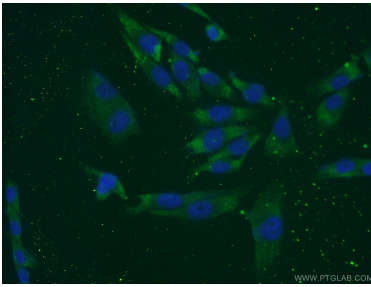
A375 cells were subjected to SDS PAGE followed by western blot with 21771-1-AP (LCE1B antibody) at dilution of 1:1000 incubated at room temperature for 1.5 hours.



Immunohistochemical analysis of paraffin-embedded human skin using 21771-1-AP (LCE1B antibody) at dilution of 1:50 (under 10x lens).



Immunohistochemical analysis of paraffin-embedded human skin using 21771-1-AP (LCE1B antibody) at dilution of 1:50 (under 40x lens).



Immunofluorescent analysis of A375 cells using 21771-1-AP (LCE1B antibody) at dilution of 1:50 and Alexa Fluor 488-conjugated AffiniPure Goat Anti-Rabbit IgG(H+L).