

For Research Use Only

CCHCR1 Polyclonal antibody

Catalog Number: 21869-1-AP



Basic Information

Catalog Number: 21869-1-AP	GenBank Accession Number: BC110534	Purification Method: Antigen affinity purification
Size: 150ul , Concentration: 500 ug/ml by Nanodrop and 480 ug/ml by Bradford method using BSA as the standard;	GeneID (NCBI): 54535	Recommended Dilutions: IHC 1:50-1:500 IF/ICC 1:20-1:200
Source: Rabbit	UNIPROT ID: Q8TD31	
Isotype: IgG	Full Name: coiled-coil alpha-helical rod protein 1	
Immunogen Catalog Number: AG16141	Calculated MW: 871 aa, 99 kDa	
	Observed MW: 85 kDa	

Applications

Tested Applications: IHC, IF/ICC, ELISA	Positive Controls:
Species Specificity: human	IHC : human colon tissue, IF/ICC : HEK-293 cells,

Note-IHC: suggested antigen retrieval with TE buffer pH 9.0; (*) Alternatively, antigen retrieval may be performed with citrate buffer pH 6.0

Background Information

CCHCR1, also named as C6orf18 or Putative gene 8 protein, is a 782 amino acid protein, which is a nuclear protein abundantly expressed in heart, liver, skeletal muscle, kidney and pancreas, and to a lesser extent in lung and placenta. HCR is overexpressed in keratinocytes of psoriatic lesions. HCR is associated with susceptibility to psoriasis, a chronic inflammatory dermatosis that affects approximately 2% of the population. CCHCR1 may be a regulator of keratinocyte proliferation or differentiation.

Storage

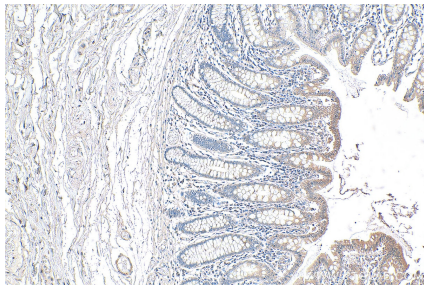
Storage:
Store at -20°C. Stable for one year after shipment.
Storage Buffer:
PBS with 0.02% sodium azide and 50% glycerol pH 7.3.
Aliquoting is unnecessary for -20°C storage

***** 20ul sizes contain 0.1% BSA**

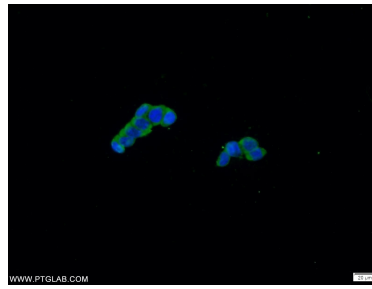
For technical support and original validation data for this product please contact:
T: 1 (888) 4PTGLAB (1-888-478-4522) (toll free in USA), or 1(312) 455-8498 (outside USA)
E: proteintech@ptglab.com
W: ptglab.com

This product is exclusively available under Proteintech Group brand and is not available to purchase from any other manufacturer.

Selected Validation Data



Immunohistochemical analysis of paraffin-embedded human colon tissue slide using 21869-1-AP (CCHCR1 antibody) at dilution of 1:200 (under 10x lens). Heat mediated antigen retrieval with Tris-EDTA buffer (pH 9.0).



Immunofluorescent analysis of HEK-293 cells using 21869-1-AP (CCHCR1 antibody) at dilution of 1:50 and Alexa Fluor 488-conjugated AffiniPure Goat Anti-Rabbit IgG(H+L).