

For Research Use Only

# EDRF1 Polyclonal antibody

Catalog Number: 21883-1-AP

1 Publications



## Basic Information

### Catalog Number:

21883-1-AP

### Size:

150ul, Concentration: 400 ug/ml by Nanodrop and 373 ug/ml by Bradford method using BSA as the standard;

### Source:

Rabbit

### Isotype:

IgG

### Immunogen Catalog Number:

AG16441

### GenBank Accession Number:

BC107479

### GeneID (NCBI):

26098

### UNIPROT ID:

Q3B7T1

### Full Name:

chromosome 10 open reading frame 137

### Calculated MW:

1238 aa, 139 kDa

### Observed MW:

140-160 kDa

### Purification Method:

Antigen affinity purification

### Recommended Dilutions:

WB 1:1000-1:4000

IHC 1:250-1:1000

## Applications

### Tested Applications:

WB, IHC, ELISA

### Cited Applications:

WB

### Species Specificity:

human, mouse, rat

### Cited Species:

human

**Note-IHC: suggested antigen retrieval with TE buffer pH 9.0; (\*) Alternatively, antigen retrieval may be performed with citrate buffer pH 6.0**

### Positive Controls:

WB : HeLa cells, human brain tissue, PC-3 cells, HEK-293 cells, mouse brain tissue, MCF-7 cells

IHC : human cervical cancer tissue,

## Background Information

EDRF1, also named as C10orf137, is a transcription factor involved in erythroid differentiation. It regulates alpha- and gamma-globin gene synthesis by modulating DNA-binding activity of GATA-1 transcription factor. EDRF1 has four isoforms with MW 66 kDa, 89 kDa and 135-140 kDa.

## Notable Publications

Author	Pubmed ID	Journal	Application
Lekha Gandhi	37534186	iScience	WB

## Storage

### Storage:

Store at -20°C. Stable for one year after shipment.

### Storage Buffer:

PBS with 0.02% sodium azide and 50% glycerol pH 7.3.

Aliquoting is unnecessary for -20°C storage

\*\*\* 20ul sizes contain 0.1% BSA

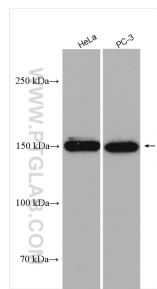
For technical support and original validation data for this product please contact:

T: 1 (888) 4PTGLAB (1-888-478-4522) (toll free in USA), or 1(312) 455-8498 (outside USA)

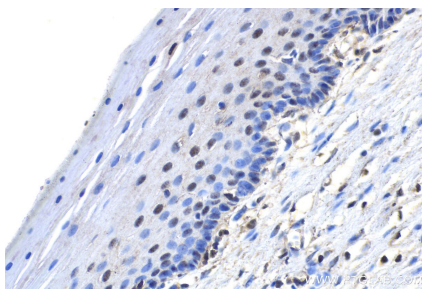
E: [proteintech@ptglab.com](mailto:proteintech@ptglab.com)  
W: [ptglab.com](http://ptglab.com)

This product is exclusively available under Proteintech Group brand and is not available to purchase from any other manufacturer.

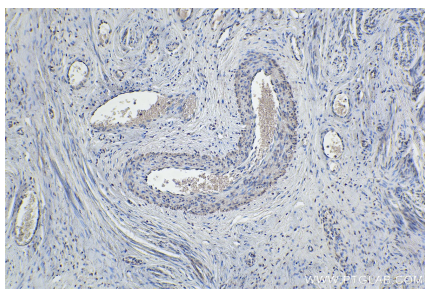
Selected Validation Data



Various lysates were subjected to SDS PAGE followed by western blot with 21883-1-AP (EDRF1 antibody) at dilution of 1:2000 incubated at room temperature for 1.5 hours.



Immunohistochemical analysis of paraffin-embedded human cervical cancer tissue slide using 21883-1-AP (EDRF1 antibody) at dilution of 1:500 (under 40x lens). Heat mediated antigen retrieval with Tris-EDTA buffer (pH 9.0).



Immunohistochemical analysis of paraffin-embedded human cervical cancer tissue slide using 21883-1-AP (EDRF1 antibody) at dilution of 1:500 (under 10x lens). Heat mediated antigen retrieval with Tris-EDTA buffer (pH 9.0).