

For Research Use Only

TMED3 Polyclonal antibody

Catalog Number: 21902-1-AP

Featured Product

6 Publications



Basic Information

Catalog Number:

21902-1-AP

Size:

150ul, Concentration: 800 ug/ml by Nanodrop and 400 ug/ml by Bradford method using BSA as the standard;

Source:

Rabbit

Isotype:

IgG

Immunogen Catalog Number:

AG14032

GenBank Accession Number:

BC000027

GeneID (NCBI):

23423

UNIPROT ID:

Q9Y3Q3

Full Name:

transmembrane emp24 protein transport domain containing 3

Calculated MW:

217 aa, 25 kDa

Observed MW:

21-25 kDa

Purification Method:

Antigen affinity purification

Recommended Dilutions:

WB 1:500-1:2000

IHC 1:50-1:500

Applications

Tested Applications:

WB, IHC, ELISA

Cited Applications:

WB

Species Specificity:

human, mouse, rat

Cited Species:

human

Note-IHC: suggested antigen retrieval with TE buffer pH 9.0; (*) Alternatively, antigen retrieval may be performed with citrate buffer pH 6.0

Positive Controls:

WB : HeLa cells, MCF-7 cells, mouse small intestine tissue, mouse skin tissue, HT-1080 cells, HepG2 cells

IHC : human stomach cancer tissue,

Notable Publications

Author	Pubmed ID	Journal	Application
Chengfeng Merriman	31591269	J Biol Chem	WB
Danjie Zhang	34758370	Toxicol Appl Pharmacol	WB
Xiumei Zhang	32606792	Onco Targets Ther	WB

Storage

Storage:

Store at -20°C. Stable for one year after shipment.

Storage Buffer:

PBS with 0.02% sodium azide and 50% glycerol pH 7.3.

Aliquoting is unnecessary for -20°C storage

*** 20ul sizes contain 0.1% BSA

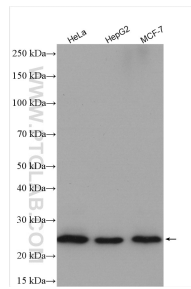
For technical support and original validation data for this product please contact:

T: 1 (888) 4PTGLAB (1-888-478-4522) (toll free in USA), or 1(312) 455-8498 (outside USA)

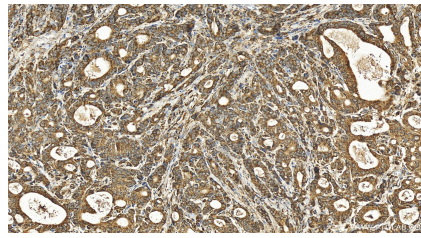
E: proteintech@ptglab.com
W: ptglab.com

This product is exclusively available under Proteintech Group brand and is not available to purchase from any other manufacturer.

Selected Validation Data



Various lysates were subjected to SDS PAGE followed by western blot with 21902-1-AP (TMED3 antibody) at dilution of 1:1000 incubated at room temperature for 1.5 hours.



Immunohistochemical analysis of paraffin-embedded human stomach cancer tissue slide using 21902-1-AP (TMED3 antibody) at dilution of 1:200 (under 20x lens). Heat mediated antigen retrieval with Tris-EDTA buffer (pH 9.0).