

For Research Use Only

ONECUT2 Polyclonal antibody

Catalog Number: 21916-1-AP

Featured Product

17 Publications



Basic Information

Catalog Number:

21916-1-AP

Size:

150ul, Concentration: 600 ug/ml by Nanodrop;

Source:

Rabbit

Isotype:

IgG

Immunogen Catalog Number:

AG16162

GenBank Accession Number:

BC108925

GeneID (NCBI):

9480

UNIPROT ID:

O95948

Full Name:

one cut homeobox 2

Calculated MW:

504 aa, 54 kDa

Observed MW:

54-60 kDa

Purification Method:

Antigen affinity purification

Recommended Dilutions:

WB 1:1000-1:4000

IP 0.5-4.0 ug for 1.0-3.0 mg of total protein lysate

IHC 1:200-1:800

Applications

Tested Applications:

WB, IHC, IP, ELISA

Cited Applications:

WB, IHC, IP, ChIP

Species Specificity:

human, mouse

Cited Species:

human, mouse, rat

Note-IHC: suggested antigen retrieval with TE buffer pH 9.0; (*) Alternatively, antigen retrieval may be performed with citrate buffer pH 6.0

Positive Controls:

WB: HeLa cells, A549 cells, mouse skin tissue, HEK-293 cells, HepG2 cells, Jurkat cells

IP: HEK-293 cells,

IHC: human stomach cancer tissue,

Background Information

ONECUT2, also named as One cut domain family member 2 or Hepatocyte nuclear factor 6-beta, is a 504 amino acid protein, which contains one CUT DNA-binding domain and one homeobox DNA-binding domain. ONECUT2 belongs to the CUT homeobox family and activates the transcription of a number of liver genes such as HNF3B. ONECUT2 is required for liver differentiation and metabolism. ONECUT2 and ONECUT3 play redundant roles with ONECUT1 in pancreas development.

Notable Publications

Author	Pubmed ID	Journal	Application
Yangfei Yi	36178080	Orthop Surg	WB
Danfei Liu	34839358	Cell Death Dis	WB, ChIP
Mirja Rotinen	30478421	Nat Med	WB

Storage

Storage:

Store at -20°C. Stable for one year after shipment.

Storage Buffer:

PBS with 0.02% sodium azide and 50% glycerol pH 7.3.

Aliquoting is unnecessary for -20°C storage

*** 20ul sizes contain 0.1% BSA

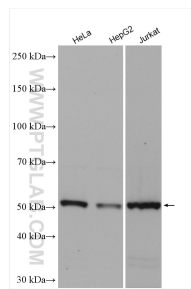
For technical support and original validation data for this product please contact:

T: 1 (888) 4PTGLAB (1-888-478-4522) (toll free in USA), or 1(312) 455-8498 (outside USA)

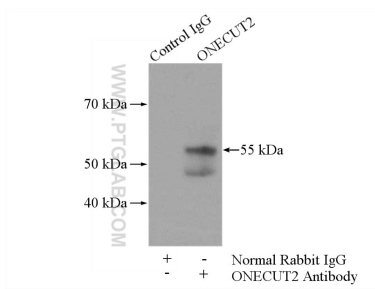
E: proteintech@ptglab.com
W: ptglab.com

This product is exclusively available under Proteintech Group brand and is not available to purchase from any other manufacturer.

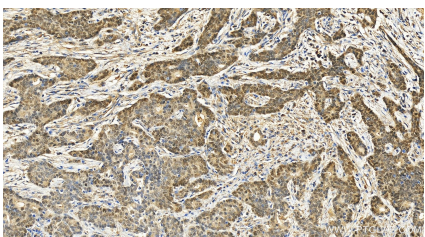
Selected Validation Data



Various lysates were subjected to SDS PAGE followed by western blot with 21916-1-AP (ONECUT2 antibody) at dilution of 1:2000 incubated at room temperature for 1.5 hours.



IP result of anti-ONECUT2 (IP:21916-1-AP, 4ug; Detection:21916-1-AP 1:300) with HEK-293 cells lysate 3200ug.



Immunohistochemical analysis of paraffin-embedded human stomach cancer tissue slide using 21916-1-AP (ONECUT2 antibody) at dilution of 1:400 (under 20x lens). Heat mediated antigen retrieval with Tris-EDTA buffer (pH 9.0).