

For Research Use Only

# BCL2L12 Polyclonal antibody

Catalog Number: 21969-1-AP



## Basic Information

<b>Catalog Number:</b> 21969-1-AP	<b>GenBank Accession Number:</b> BC104005	<b>Purification Method:</b> Antigen affinity purification
<b>Size:</b> 150ul , Concentration: 600 µg/ml by Nanodrop and 393 µg/ml by Bradford method using BSA as the standard;	<b>GeneID (NCBI):</b> 83596	<b>Recommended Dilutions:</b> WB 1:500-1:2000 IHC 1:20-1:200 IF 1:50-1:500
<b>Source:</b> Rabbit	<b>Full Name:</b> BCL2-like 12 (proline rich)	
<b>Isotype:</b> IgG	<b>Calculated MW:</b> 334 aa, 37 kDa	
<b>Immunogen Catalog Number:</b> AG16856	<b>Observed MW:</b> 32 kDa	

## Applications

<b>Tested Applications:</b> IF, IHC, WB, ELISA	<b>Positive Controls:</b> WB : PC-3 cells, IHC : human breast cancer tissue, IF : PC-3 cells,
<b>Species Specificity:</b> human	
<b>Note-IHC:</b> <i>suggested antigen retrieval with TE buffer pH 9.0; (*) Alternatively, antigen retrieval may be performed with citrate buffer pH 6.0</i>	

## Background Information

### Storage

**Storage:**  
Store at -20°C. Stable for one year after shipment.  
**Storage Buffer:**  
PBS with 0.02% sodium azide and 50% glycerol pH 7.3.  
Aliquoting is unnecessary for -20°C storage

\*\*\* 20ul sizes contain 0.1% BSA

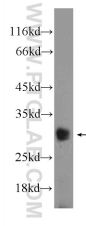
For technical support and original validation data for this product please contact:

T: 1 (888) 4PTGLAB (1-888-478-4522) (toll free in USA), or 1(312) 455-8498 (outside USA)

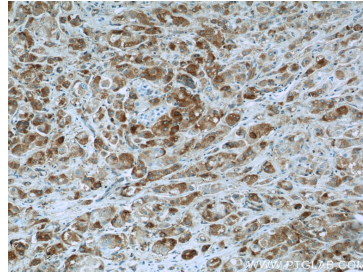
E: proteintech@ptglab.com  
W: ptglab.com

This product is exclusively available under Proteintech Group brand and is not available to purchase from any other manufacturer.

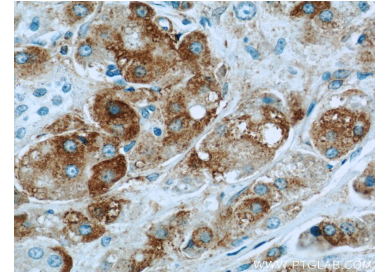
## Selected Validation Data



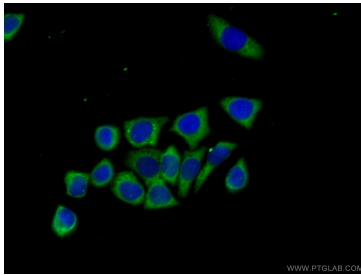
PC-3 cells were subjected to SDS PAGE followed by western blot with 21969-1-AP (BCL2L12 Antibody) at dilution of 1:1000 incubated at room temperature for 1.5 hours.



Immunohistochemical analysis of paraffin-embedded human breast cancer slide using 21969-1-AP (BCL2L12 Antibody) at dilution of 1:50.



Immunohistochemical analysis of paraffin-embedded human breast cancer slide using 21969-1-AP (BCL2L12 Antibody) at dilution of 1:50.



Immunofluorescent analysis of (-20°C Ethanol) fixed PC-3 cells using 21969-1-AP (BCL2L12 antibody) at dilution of 1:50 and Alexa Fluor 488-conjugated AffiniPure Goat Anti-Rabbit IgG(H+L).