

For Research Use Only

MACC1 Polyclonal antibody

Catalog Number: 21970-1-AP

2 Publications



Basic Information

Catalog Number:

21970-1-AP

Size:

150ul, Concentration: 400 ug/ml by Nanodrop and 300 ug/ml by Bradford method using BSA as the standard;

Source:

Rabbit

Isotype:

IgG

Immunogen Catalog Number:

AG16884

GenBank Accession Number:

BC137090

GeneID (NCBI):

346389

UNIPROT ID:

Q6ZN28

Full Name:

metastasis associated in colon cancer

1

Calculated MW:

852 aa, 97 kDa

Purification Method:

Antigen affinity purification

Recommended Dilutions:

IHC 1:20-1:200

Applications

Tested Applications:

IHC, ELISA

Cited Applications:

IHC

Species Specificity:

human, mouse

Cited Species:

human

Positive Controls:

IHC : human liver cancer tissue, human colon cancer tissue

Note-IHC: suggested antigen retrieval with TE buffer pH 9.0; (*) Alternatively, antigen retrieval may be performed with citrate buffer pH 6.0

Background Information

MACC1, Metalloantigenolytic Cleavage Cartilage Proteinase 1, belongs to the ADAM (a disintegrin and metalloprotease) family. MACC1 was first identified in colon cancer. It is a key prognostic biomarker and is involved in recurrence, metastasis, and survival in solid cancers (PMID: 23815185). MACC1 expression is primarily observed in cartilage, but it's also present in other tissues like bone, synovium, and the developing nervous system (PMID: 36979146).

Notable Publications

Author	Pubmed ID	Journal	Application
Shuo Chen	27991682	Mol Carcinog	
Huan Yang	38818465	Int J Med Sci	IHC

Storage

Storage:

Store at -20°C. Stable for one year after shipment.

Storage Buffer:

PBS with 0.02% sodium azide and 50% glycerol pH 7.3.

Aliquoting is unnecessary for -20°C storage

*** 20ul sizes contain 0.1% BSA

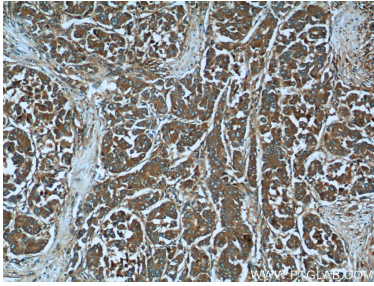
For technical support and original validation data for this product please contact:

T: 1 (888) 4PTGLAB (1-888-478-4522) (toll free in USA), or 1(312) 455-8498 (outside USA)

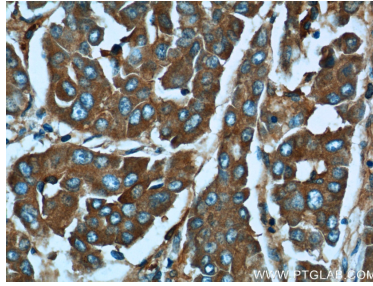
E: proteintech@ptglab.com
W: ptglab.com

This product is exclusively available under Proteintech Group brand and is not available to purchase from any other manufacturer.

Selected Validation Data



Immunohistochemical analysis of paraffin-embedded human liver cancer tissue slide using 21970-1-AP (MACC1 Antibody) at dilution of 1:50 (under 10x lens).



Immunohistochemical analysis of paraffin-embedded human liver cancer tissue slide using 21970-1-AP (MACC1 Antibody) at dilution of 1:50 (under 40x lens).