

For Research Use Only

GFRA2 Polyclonal antibody

Catalog Number: 21973-1-AP

3 Publications



Basic Information

Catalog Number: 21973-1-AP	GenBank Accession Number: BC041688	Purification Method: Antigen affinity purification
Size: 150ul, Concentration: 650 ug/ml by Nanodrop and 393 ug/ml by Bradford method using BSA as the standard;	GeneID (NCBI): 2675	Recommended Dilutions: WB 1:500-1:2000 IHC 1:20-1:200
Source: Rabbit	UNIPROT ID: O00451	
Isotype: IgG	Full Name: GDNF family receptor alpha 2	
Immunogen Catalog Number: AG16893	Calculated MW: 464 aa, 52 kDa	
	Observed MW: 34-40 kDa, 50-55 kDa	

Applications

Tested Applications: WB, IHC, ELISA	Positive Controls: WB : HepG2 cells, multi-cells/tissue IHC : human liver tissue,
Cited Applications: WB, IHC	
Species Specificity: human, mouse	
Cited Species: human, rat	
Note-IHC: suggested antigen retrieval with TE buffer pH 9.0; (*) Alternatively, antigen retrieval may be performed with citrate buffer pH 6.0	

Background Information

GFRA2, also named as GDNFRB, RETL2 and TRNR2, belongs to the GDNFR family. It is a receptor for neurturin. GFRA2 mediates the NRTN-induced autophosphorylation and activation of the RET receptor. It is a potent survival factor for central dopaminergic neurons, motor neurons, and several other populations of neurons in the central and peripheral nervous systems. The GDNF signal is mediated by a complex of the receptor tyrosine kinase RET and a glycosylphosphatidylinositol (GPI)-linked protein, GDNFRA. GFRA2 has three isoforms with MW 34-36 kDa, 39-41 kDa and 50-55 kDa. This antibody recognizes all the three isoforms.

Notable Publications

Author	Pubmed ID	Journal	Application
Guo-Qing Wang	31210367	Biotechnol Appl Biochem	WB
Jiangning Gu	27400681	Cancer Lett	IHC
Luoying Wang	39505982	Sci Rep	IHC

Storage

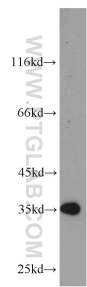
Storage:
Store at -20°C. Stable for one year after shipment.
Storage Buffer:
PBS with 0.02% sodium azide and 50% glycerol pH 7.3.
Aliquoting is unnecessary for -20°C storage

*** 20ul sizes contain 0.1% BSA

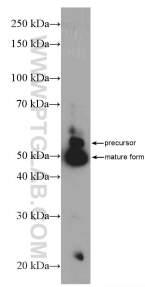
For technical support and original validation data for this product please contact:
T: 1 (888) 4PTGLAB (1-888-478-4522) (toll free in USA), or 1(312) 455-8498 (outside USA)
E: proteintech@ptglab.com
W: ptglab.com

This product is exclusively available under Proteintech Group brand and is not available to purchase from any other manufacturer.

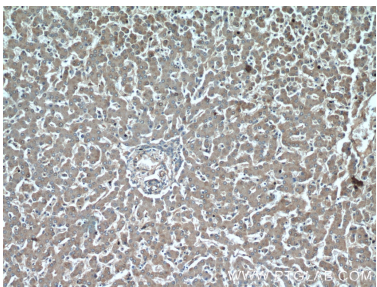
Selected Validation Data



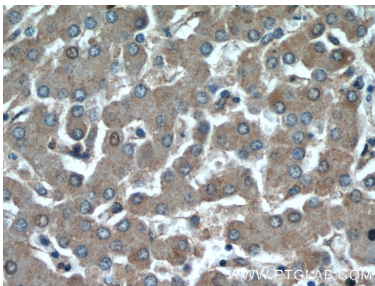
HepG2 cells were subjected to SDS PAGE followed by western blot with 21973-1-AP (GFRA2 antibody) at dilution of 1:1000 incubated at room temperature for 1.5 hours.



mouse brain tissue were subjected to SDS PAGE followed by western blot with 21973-1-AP (GFRA2 Antibody) at dilution of 1:600 incubated at room temperature for 1.5 hours.



Immunohistochemical analysis of paraffin-embedded human liver using 21973-1-AP (GFRA2 antibody) at dilution of 1:50 (under 10x lens).



Immunohistochemical analysis of paraffin-embedded human liver using 21973-1-AP (GFRA2 antibody) at dilution of 1:50 (under 40x lens).