

For Research Use Only

Annexin A1 Polyclonal antibody

Catalog Number: 21990-1-AP

Featured Product

41 Publications



Basic Information

Catalog Number:

21990-1-AP

Size:

150ul, Concentration: 600 ug/ml by Nanodrop;

Source:

Rabbit

Isotype:

IgG

Immunogen Catalog Number:

AG17273

GenBank Accession Number:

BC001275

GeneID (NCBI):

301

UNIPROT ID:

P04083

Full Name:

annexin A1

Calculated MW:

346 aa, 39 kDa

Observed MW:

37 kDa

Purification Method:

Antigen affinity purification

Recommended Dilutions:

WB: 1:5000-1:50000

IP: 0.5-4.0 ug for 1.0-3.0 mg of total protein lysate

IHC: 1:2500-1:10000

IF/ICC: 1:200-1:800

FC (Intra): 0.50 ug per 10⁶ cells in a 100 µl suspension

Applications

Tested Applications:

WB, IHC, IF/ICC, FC (Intra), IP, ELISA

Cited Applications:

WB, IHC, IF, IP, CoIP

Species Specificity:

human, mouse, rat

Cited Species:

human, mouse, rat, bovine

Note-IHC: suggested antigen retrieval with TE buffer pH 9.0; (*) Alternatively, antigen retrieval may be performed with citrate buffer pH 6.0

Positive Controls:

WB: A549 cells, A431 cells, C6 cells, HeLa cells, HepG2 cells, MCF-7 cells, MDA-MB-453s cells, multi-cells, U-937 cells, K-562 cells, NIH/3T3 cells, Calu-1 cells

IP: HeLa cells,

IHC: human colon tissue, human kidney tissue, human lung tissue, human oesophagus tissue, human ovary cancer tissue, human ovary tumor tissue, human small intestine tissue

IF/ICC: A549 cells,

FC (Intra): NIH/3T3 cells, Jurkat cells

Background Information

ANXA1, also named as ANX1, LPC1 and p35, belongs to the annexin family. It is a member of the annexin family of Ca²⁺-binding and phospholipidbinding proteins, and it is particularly abundant in various populations of peripheral blood leukocytes. ANXA1 regulates phospholipase A2 activity. It seems to bind from two to four calcium ions with high affinity. ANXA1 is a pleiotrophic protein produced by many cell types including peripheral blood leucocytes.

Notable Publications

Author	Pubmed ID	Journal	Application
Chuming Jia	30292410	Biochem Biophys Res Commun	WB, IHC
Manhui Zhu	34595678	Inflammation	WB
Lin Yuan	34781202	Biochem Biophys Res Commun	WB

Storage

Storage:

Store at -20°C. Stable for one year after shipment.

Storage Buffer:

PBS with 0.02% sodium azide and 50% glycerol, pH7.3

Aliquoting is unnecessary for -20°C storage

*** 20ul sizes contain 0.1% BSA

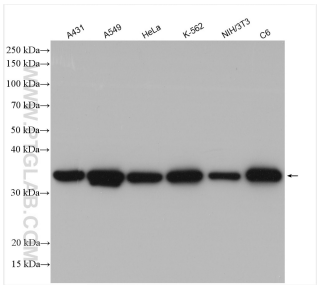
For technical support and original validation data for this product please contact:

T: 1 (888) 4PTGLAB (1-888-478-4522) (toll free in USA), or 1(312) 455-8498 (outside USA)

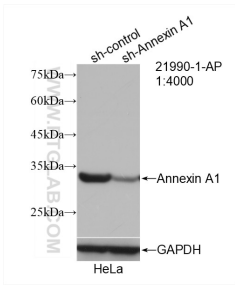
E: proteintech@ptglab.com
W: ptglab.com

This product is exclusively available under Proteintech Group brand and is not available to purchase from any other manufacturer.

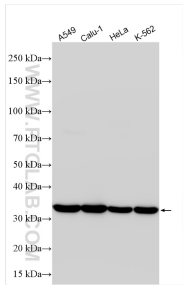
Selected Validation Data



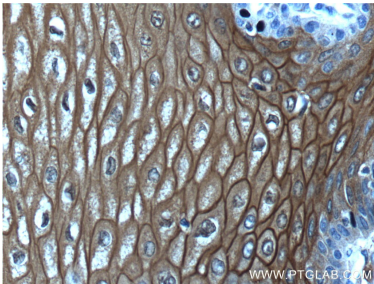
Various lysates were subjected to SDS PAGE followed by western blot with 21990-1-AP (Annexin A1 antibody) at dilution of 1:25000 incubated at room temperature for 1.5 hours.



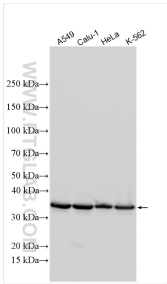
WB result of Annexin A1 antibody (21990-1-AP; 1:4000; incubated at room temperature for 1.5 hours) with sh-Control and sh-Annexin A1 transfected HeLa cells.



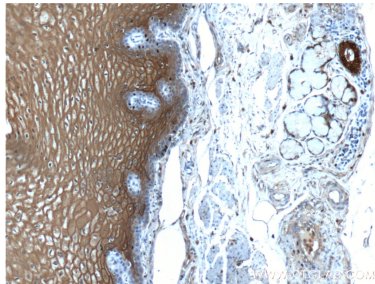
A549 cells were subjected to SDS PAGE followed by western blot with 21990-1-AP (Annexin A1 antibody) at dilution of 1:40000 incubated at room temperature for 1.5 hours.



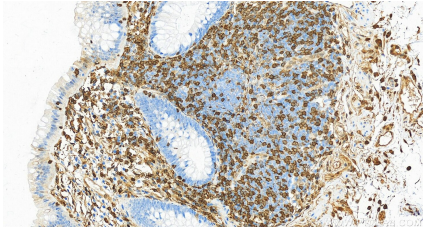
Immunohistochemical analysis of paraffin-embedded human oesophagus tissue slide using 21990-1-AP (Annexin A1 antibody) at dilution of 1:200 (under 40x lens).



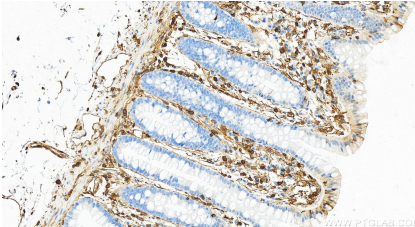
Various lysates were subjected to SDS PAGE followed by western blot with 21990-1-AP (Annexin A1 antibody) at dilution of 1:60000 incubated at room temperature for 1.5 hours.



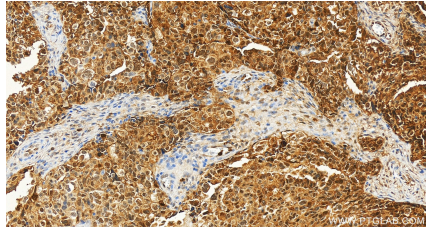
Immunohistochemical analysis of paraffin-embedded human oesophagus tissue slide using 21990-1-AP (Annexin A1 antibody) at dilution of 1:200 (under 10x lens).



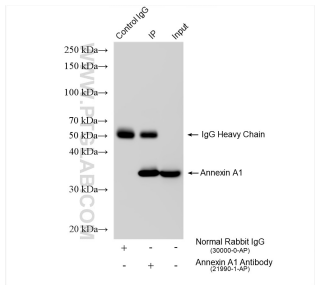
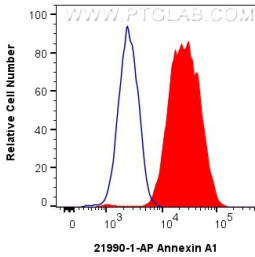
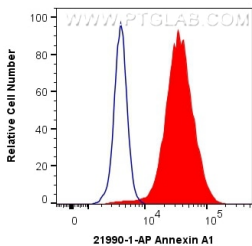
Immunohistochemical analysis of paraffin-embedded human normal colon slide using 21990-1-AP (Annexin A1 antibody) at dilution of 1:5000 (under 20x lens). Heat mediated antigen retrieval with Tris-EDTA buffer (pH 9.0).



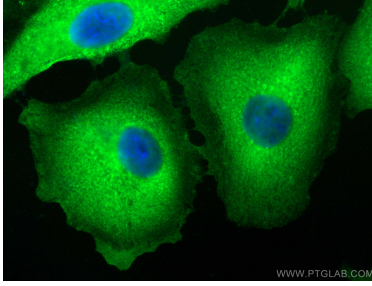
Immunohistochemical analysis of paraffin-embedded human normal colon slide using 21990-1-AP (Annexin A1 antibody) at dilution of 1:5000 (under 20x lens). Heat mediated antigen retrieval with Tris-EDTA buffer (pH 9.0).



Immunohistochemical analysis of paraffin-embedded human ovary cancer tissue slide using 21990-1-AP (Annexin A1 antibody) at dilution of 1:5000 (under 20x lens). Heat mediated antigen retrieval with Tris-EDTA buffer (pH 9.0).



1x10⁶ NIH/3T3 cells were intracellularly stained with 0.5 ug Anti-Human Annexin A1 (21990-1-AP) and CoraLite®488-Conjugated AffiniPure Goat Anti-Rabbit IgG(H+L) at dilution 1:1000 (red), or 0.5 ug Control Antibody. Cells were fixed with 4% PFA and permeabilized with Flow Cytometry Perm Buffer (PF00011-C).



Immunofluorescent analysis of (-20°C Methanol) fixed A549 cells using Annexin A1 antibody (21990-1-AP) at dilution of 1:400 and CoraLite®488-Conjugated AffiniPure Goat Anti-Rabbit IgG(H+L) (SA00013-2).

1x10⁶ Jurkat cells were intracellularly stained with 0.25 ug Annexin A1 Polyclonal antibody (21990-1-AP) and CoraLite®488-Conjugated Goat Anti-Rabbit IgG(H+L) (SA00013-2)(red), or 0.25 ug Rabbit IgG control Rabbit PolyAb (30000-0-AP) (blue). Cells were fixed and permeabilized with Transcription Factor Staining Buffer Kit (PF00011).

IP result of anti-Annexin A1 (IP:21990-1-AP, 4ug; Detection:21990-1-AP 1:20000) with HeLa cells lysate 1120 ug.