

For Research Use Only

PIK3C2A Polyclonal antibody

Catalog Number: 22028-1-AP

Featured Product

10 Publications



Basic Information

Catalog Number:

22028-1-AP

Size:

150ul, Concentration: 500 ug/ml by Nanodrop;

Source:

Rabbit

Isotype:

IgG

Immunogen Catalog Number:

AG16894

GenBank Accession Number:

BC113658

GeneID (NCBI):

5286

UNIPROT ID:

O00443

Full Name:

phosphoinositide-3-kinase, class 2, alpha polypeptide

Calculated MW:

1686 aa, 191 kDa

Observed MW:

191 kDa

Purification Method:

Antigen affinity purification

Recommended Dilutions:

WB 1:2000-1:8000

IP 0.5-4.0 ug for 1.0-3.0 mg of total protein lysate

IHC 1:1000-1:4000

IF/ICC 1:50-1:500

Applications

Tested Applications:

WB, IHC, IF/ICC, IP, ELISA

Cited Applications:

WB, IF, IHC

Species Specificity:

human, mouse

Cited Species:

human, rat

Note-IHC: suggested antigen retrieval with TE buffer pH 9.0; (*) Alternatively, antigen retrieval may be performed with citrate buffer pH 6.0

Positive Controls:

WB : HeLa cells, PC-3 cells, human placenta tissue

IP : PC-3 cells,

IHC : mouse ovary tissue, mouse heart tissue

IF/ICC : HeLa cells,

Notable Publications

Author	Pubmed ID	Journal	Application
Glenn F W Walpole	35484249	Nat Cell Biol	WB
Huayi Li	35098698	Adv Sci (Weinh)	WB,IF
Ellis L Ryan	34005327	J Cell Sci	WB,IF

Storage

Storage:

Store at -20°C. Stable for one year after shipment.

Storage Buffer:

PBS with 0.02% sodium azide and 50% glycerol pH 7.3.

Aliquoting is unnecessary for -20°C storage

*** 20ul sizes contain 0.1% BSA

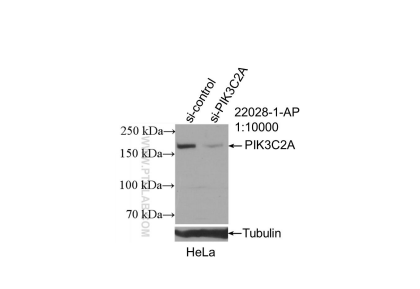
For technical support and original validation data for this product please contact:

T: 1 (888) 4PTGLAB (1-888-478-4522) (toll free in USA), or 1(312) 455-8498 (outside USA)

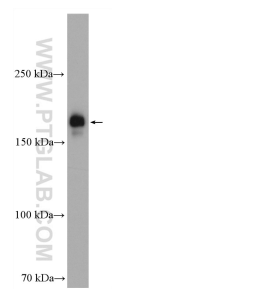
E: proteintech@ptglab.com
W: ptglab.com

This product is exclusively available under Proteintech Group brand and is not available to purchase from any other manufacturer.

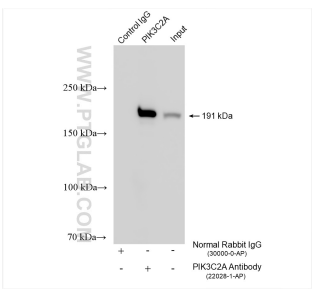
Selected Validation Data



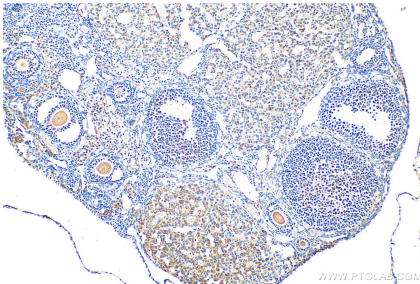
WB result of PIK3C2A antibody (22028-1-AP; 1:10000; incubated at room temperature for 1.5 hours) with sh-Control and sh-PIK3C2A transfected HeLa cells.



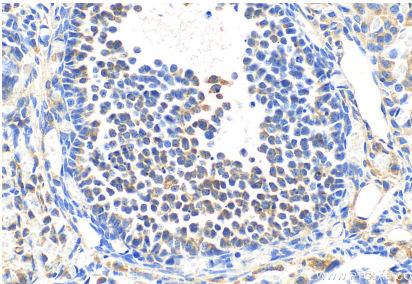
HeLa cells were subjected to SDS PAGE followed by western blot with 22028-1-AP (PIK3C2A antibody) at dilution of 1:1500 incubated at room temperature for 1.5 hours.



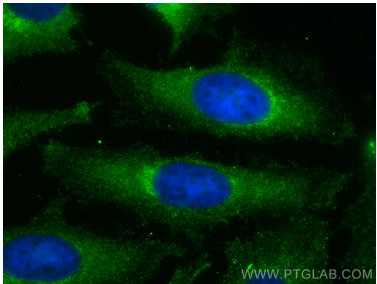
IP result of anti-PIK3C2A (IP:22028-1-AP, 4ug; Detection:22028-1-AP 1:15000) with PC-3 cells lysate 1480 ug.



Immunohistochemical analysis of paraffin-embedded mouse ovary tissue slide using 22028-1-AP (PIK3C2A antibody) at dilution of 1:2000 (under 10x lens). Heat mediated antigen retrieval with Tris-EDTA buffer (pH 9.0).



Immunohistochemical analysis of paraffin-embedded mouse ovary tissue slide using 22028-1-AP (PIK3C2A antibody) at dilution of 1:2000 (under 40x lens). Heat mediated antigen retrieval with Tris-EDTA buffer (pH 9.0).



Immunofluorescent analysis of (-20°C Methanol) fixed HeLa cells using PIK3C2A antibody (22028-1-AP) at dilution of 1:200 and CoraLite®488-Conjugated Goat Anti-Rabbit IgG(H+L).