

For Research Use Only

iPLA2 Polyclonal antibody

Catalog Number: 22030-1-AP

6 Publications



Basic Information

Catalog Number:

22030-1-AP

Size:

150ul, Concentration: 650 ug/ml by Nanodrop and 353 ug/ml by Bradford method using BSA as the standard;

Source:

Rabbit

Isotype:

IgG

Immunogen Catalog Number:

AG16896

GenBank Accession Number:

BC036742

GeneID (NCBI):

8398

UNIPROT ID:

O60733

Full Name:

phospholipase A2, group VI (cytosolic, calcium-independent)

Calculated MW:

90 kDa

Observed MW:

80 kDa, 88 kDa

Purification Method:

Antigen affinity purification

Recommended Dilutions:

WB 1:500-1:2000

IP 0.5-4.0 ug for 1.0-3.0 mg of total protein lysate

IHC 1:20-1:200

Applications

Tested Applications:

WB, IP, IHC, ELISA

Cited Applications:

WB, IF, IHC

Species Specificity:

human, mouse

Cited Species:

human, rat, mouse

Positive Controls:

WB : mouse testis tissue,

IP : mouse testis tissue,

IHC : human small intestine tissue, human brain tissue

Note-IHC: suggested antigen retrieval with TE buffer pH 9.0; (*) Alternatively, antigen retrieval may be performed with citrate buffer pH 6.0

Background Information

PLA2G6, also named as PLPLA9, is involved in the remodeling of membranes allowing arachidonic acid to be placed in the proper position in phospholipids for stimulated release. It has been implicated in normal phospholipid remodeling, nitric oxide-induced or vasopressin-induced arachidonic acid release and in leukotriene and prostaglandin production. This protein has 4 isoforms produced by alternative splicing.

Notable Publications

Author	Pubmed ID	Journal	Application
Yao Lu	31506141	Zhongguo Dang Dai Er Ke Za Zhi	IHC
Shuhua Shan	32657580	J Agric Food Chem	WB,IHC
Laura Mahoney-Sanchez	36001957	Cell Rep	WB

Storage

Storage:

Store at -20°C. Stable for one year after shipment.

Storage Buffer:

PBS with 0.02% sodium azide and 50% glycerol pH 7.3.

Aliquoting is unnecessary for -20°C storage

*** 20ul sizes contain 0.1% BSA

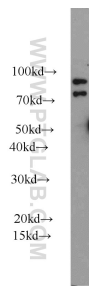
For technical support and original validation data for this product please contact:

T: 1 (888) 4PTGLAB (1-888-478-4522) (toll free in USA), or 1(312) 455-8498 (outside USA)

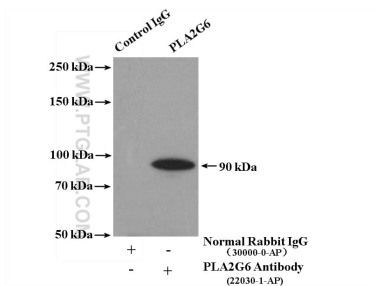
E: proteintech@ptglab.com
W: ptglab.com

This product is exclusively available under Proteintech Group brand and is not available to purchase from any other manufacturer.

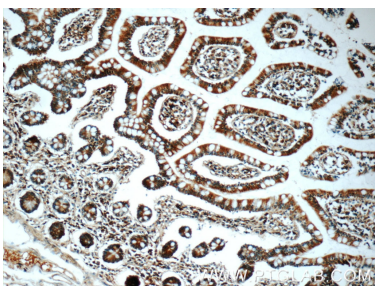
Selected Validation Data



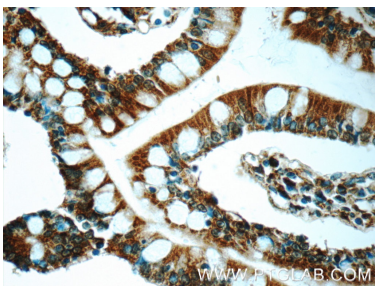
mouse testis tissue were subjected to SDS PAGE followed by western blot with 22030-1-AP (iPLA2 antibody) at dilution of 1:1000 incubated at room temperature for 1.5 hours.



IP result of anti-iPLA2 (IP:22030-1-AP, 4ug; Detection:22030-1-AP 1:800) with mouse testis tissue lysate 4000ug.



Immunohistochemical analysis of paraffin-embedded human small intestine tissue slide using 22030-1-AP (iPLA2 antibody at dilution of 1:50 (under 10x lens).



Immunohistochemical analysis of paraffin-embedded human small intestine tissue slide using 22030-1-AP (iPLA2 antibody at dilution of 1:50 (under 40x lens).