

For Research Use Only

CALHM1 Polyclonal antibody

Catalog Number: 22042-1-AP



Basic Information

Catalog Number: 22042-1-AP	GenBank Accession Number: BC036193	Purification Method: Antigen affinity purification
Size: 150ul , Concentration: 607 µg/ml by Bradford method using BSA as the standard;	GeneID (NCBI): 255022	Recommended Dilutions: WB 1:500-1:2000 IHC 1:20-1:200
Source: Rabbit	Full Name: calcium homeostasis modulator 1	
Isotype: IgG	Calculated MW: 346 aa, 38 kDa	
Immunogen Catalog Number: AG14938	Observed MW: 38-40 kDa	

Applications

Tested Applications: IHC, WB, ELISA	Positive Controls:
Species Specificity: human, mouse, rat	WB : mouse brain tissue, rat brain tissue
Note-IHC: suggested antigen retrieval with TE buffer pH 9.0; (*) Alternatively, antigen retrieval may be performed with citrate buffer pH 6.0	IHC : human brain tissue,

Background Information

Calcium homeostasis modulator 1 (CALHM1) is a membrane protein with four transmembrane helices that form an octameric ion channel with voltage-dependent activation.

Storage

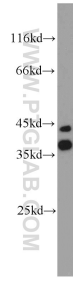
Storage:
Store at -20°C. Stable for one year after shipment.
Storage Buffer:
PBS with 0.02% sodium azide and 50% glycerol pH 7.3.
Aliquoting is unnecessary for -20°C storage

*** 20ul sizes contain 0.1% BSA

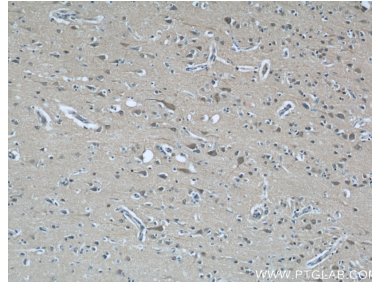
For technical support and original validation data for this product please contact:
T: 1 (888) 4PTGLAB (1-888-478-4522) (toll free in USA), or 1(312) 455-8498 (outside USA)
E: proteintech@ptglab.com
W: ptglab.com

This product is exclusively available under Proteintech Group brand and is not available to purchase from any other manufacturer.

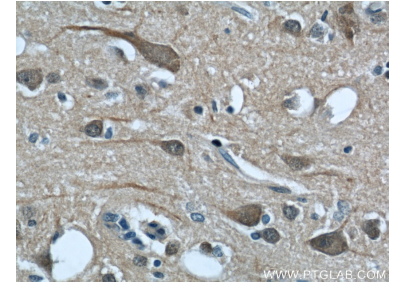
Selected Validation Data



mouse brain tissue were subjected to SDS PAGE followed by western blot with 22042-1-AP (CALHM1 antibody) at dilution of 1:1000 incubated at room temperature for 1.5 hours.



Immunohistochemical analysis of paraffin-embedded human brain using 22042-1-AP (CALHM1 antibody) at dilution of 1:50 (under 10x lens).



Immunohistochemical analysis of paraffin-embedded human brain using 22042-1-AP (CALHM1 antibody) at dilution of 1:50 (under 40x lens).