

For Research Use Only

AHL1 Polyclonal antibody

Catalog Number: 22045-1-AP

Featured Product

7 Publications



Basic Information

Catalog Number:

22045-1-AP

Size:

150ul, Concentration: 400 ug/ml by Nanodrop;

Source:

Rabbit

Isotype:

IgG

Immunogen Catalog Number:

AG16885

GenBank Accession Number:

BC094800

GeneID (NCBI):

54806

UNIPROT ID:

Q8N157

Full Name:

Abelson helper integration site 1

Calculated MW:

1196 aa, 137 kDa

Observed MW:

137-150 kDa

Purification Method:

Antigen affinity purification

Recommended Dilutions:

WB 1:2000-1:12000

Applications

Tested Applications:

WB, ELISA

Cited Applications:

WB, IF

Species Specificity:

human

Cited Species:

human, mouse

Positive Controls:

WB : HEK-293 cells, HeLa cells, Jurkat cell

Background Information

AHL1, encoding the Joubertin protein, is an alternatively spliced signaling molecule that contains seven Trp-Asp (WD) repeats, an SH3 domain, and numerous SH3-binding sites. AHL1 is expressed strongly in embryonic hindbrain and forebrain. AHL1 is involved in vesicle trafficking and is required for ciliogenesis, formation of primary non-motile cilium, and recruitment of RAB8A to the basal body of primary cilium. AHL1, as a positive modulator of classical Wnt signaling, may play a key role in ciliary signaling during cerebellar embryonic development (PMID: 15467982, PMID: 21623382).

Notable Publications

Author	Pubmed ID	Journal	Application
Elisa Molinari	31346239	Sci Rep	IF
Yin Loon Lee	25103236	Mol Biol Cell	IF, WB
Sarah E Conduit	33996795	Front Cell Dev Biol	IF

Storage

Storage:

Store at -20°C. Stable for one year after shipment.

Storage Buffer:

PBS with 0.02% sodium azide and 50% glycerol, pH7.3

Aliquoting is unnecessary for -20°C storage

*** 20ul sizes contain 0.1% BSA

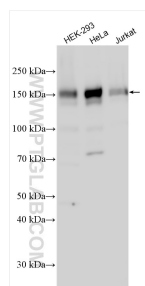
For technical support and original validation data for this product please contact:

T: 1 (888) 4PTGLAB (1-888-478-4522) (toll free in USA), or 1(312) 455-8498 (outside USA)

E: proteintech@ptglab.com
W: ptglab.com

This product is exclusively available under Proteintech Group brand and is not available to purchase from any other manufacturer.

Selected Validation Data



Various lysates were subjected to SDS PAGE followed by western blot with 22045-1-AP (AHI1 antibody) at dilution of 1:6000 incubated at room temperature for 1.5 hours.