

For Research Use Only

CEP97 Polyclonal antibody

Catalog Number: 22050-1-AP

23 Publications



Basic Information

Catalog Number:

22050-1-AP

Size:

150ul, Concentration: 333 ug/ml by Bradford method using BSA as the standard;

Source:

Rabbit

Isotype:

IgG

Immunogen Catalog Number:

AG16995

GenBank Accession Number:

BC041085

GeneID (NCBI):

79598

UNIPROT ID:

Q8IW35

Full Name:

centrosomal protein 97kDa

Calculated MW:

865 aa, 97 kDa

Observed MW:

130-140 kDa

Purification Method:

Antigen affinity purification

Recommended Dilutions:

WB 1:500-1:2000

IP 0.5-4.0 ug for 1.0-3.0 mg of total protein lysate

IHC 1:20-1:200

IF/ICC 1:20-1:200

Applications

Tested Applications:

WB, IHC, IF/ICC, IP, ELISA

Cited Applications:

WB, IF, IP

Species Specificity:

human, Canine

Cited Species:

human, mouse, drosophila

Note-IHC: suggested antigen retrieval with TE buffer pH 9.0; (*) Alternatively, antigen retrieval may be performed with citrate buffer pH 6.0

Positive Controls:

WB : HL-60 cells, HEK-293 cells, HeLa cells, PC-3 cells

IP : HeLa cells,

IHC : human breast cancer tissue, human liver tissue

IF/ICC : MDCK cells,

Background Information

CEP97, also named as LRRIQ2, contains one IQ domain, eight LRR (leucine-rich) repeats and one LRRCT domain. It collaborates with CEP110, being involved in the suppression of a cilia assembly program. CEP97 is required for correct spindle formation and has a role in cytokinesis. It is required for recruitment of CEP110 to the centrosome. This protein has a calculated MW ~97 kDa, although the protein migrates at a molecular weight of approximate 140 kDa. The protein is highly acidic, with a pI ~4.7, providing a potential explanation for its reduced mobility in SDS-PAGE. [PMID: 17719545]. This is a rabbit polyclonal antibody raised against the C terminus of human CEP97.

Notable Publications

Author	Pubmed ID	Journal	Application
Min Liu	34480124	Cell Res	WB
Ning Huang	30375385	Nat Commun	WB,IF
Xiao-Lin Shen	34813648	J Cell Biol	IF,IP

Storage

Storage:

Store at -20°C. Stable for one year after shipment.

Storage Buffer:

PBS with 0.02% sodium azide and 50% glycerol, pH7.3

Aliquoting is unnecessary for -20°C storage

*** 20ul sizes contain 0.1% BSA

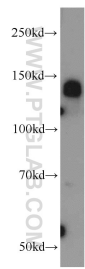
For technical support and original validation data for this product please contact:

T: 1 (888) 4PTGLAB (1-888-478-4522) (toll free in USA), or 1(312) 455-8498 (outside USA)

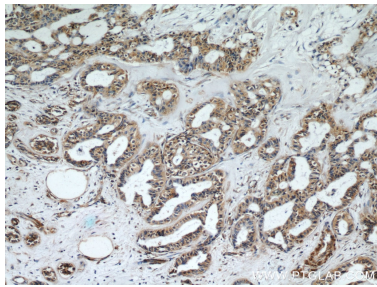
E: proteintech@ptglab.com
W: ptglab.com

This product is exclusively available under Proteintech Group brand and is not available to purchase from any other manufacturer.

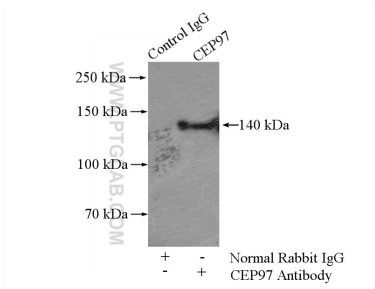
Selected Validation Data



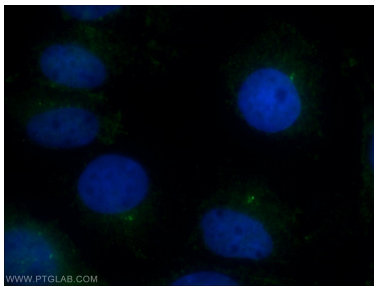
HL-60 cells were subjected to SDS PAGE followed by western blot with 22050-1-AP (CEP97 antibody) at dilution of 1:1000 incubated at room temperature for 1.5 hours.



Immunohistochemical analysis of paraffin-embedded human breast cancer using 22050-1-AP (CEP97 antibody) at dilution of 1:50 (under 10x lens).



IP result of anti-CEP97 (IP:22050-1-AP, 4ug; Detection:22050-1-AP 1:1000) with HeLa cells lysate 1200ug.



Immunofluorescent analysis of MDCK cells using 22050-1-AP (CEP97 antibody) at dilution of 1:50 and Alexa Fluor 488-conjugated Goat Anti-Rabbit IgG(H+L).