

For Research Use Only

PDE6B Polyclonal antibody

Catalog Number: 22063-1-AP

9 Publications



Basic Information

Catalog Number:

22063-1-AP

Size:

150ul, Concentration: 750 ug/ml by Nanodrop and 420 ug/ml by Bradford method using BSA as the standard;

Source:

Rabbit

Isotype:

IgG

Immunogen Catalog Number:

AG17139

GenBank Accession Number:

BC000249

GeneID (NCBI):

5158

UNIPROT ID:

P35913

Full Name:

phosphodiesterase 6B, cGMP-specific, rod, beta

Calculated MW:

854 aa, 98 kDa

Observed MW:

98 kDa

Purification Method:

Antigen affinity purification

Recommended Dilutions:

WB: 1:2000-1:12000

IP: 0.5-4.0 ug for 1.0-3.0 mg of total protein lysate

IHC: 1:300-1:1200

IF-P: 1:50-1:500

Applications

Tested Applications:

WB, IHC, IF-P, IP, ELISA

Cited Applications:

WB, IHC, IF

Species Specificity:

human, mouse, rat

Cited Species:

human, mouse, zebrafish

Note-IHC: suggested antigen retrieval with TE buffer pH 9.0; (*) Alternatively, antigen retrieval may be performed with citrate buffer pH 6.0

Positive Controls:

WB: mouse eye tissue, A549 cells, rat eye tissue

IP: Y79 cells,

IHC: rat eye tissue, mouse eye tissue

IF-P: rat eye tissue, mouse eye tissue

Background Information

PDE6 is a cGMP-specific PDE family and presents multicomponent enzyme complexes. The rod PDE6 enzyme is comprised of two catalytic subunits (PDE6A and PDE6B) and it is expressed in human lungs (PMID:20979602). PDE6B(Rod cGMP-specific 3',5'-cyclic phosphodiesterase subunit beta) is also named as PDEB and belongs to the cyclic nucleotide phosphodiesterase family. PDE6B also has a C-terminal CAAX motif for posttranslational processing involving lipidation, proteolysis, and carboxymethylation (PMID:8394243). Defects in PDE6B are the cause of retinitis pigmentosa type 40 (RP40)(PMID:22334370) and congenital stationary night blindness autosomal dominant type 2 (CSNBAD2) (PMID:8075643).

Notable Publications

Author	Pubmed ID	Journal	Application
Carla Sanjurjo-Soriano	36114559	Stem Cell Res Ther	WB
Poppy Datta	31694913	J Biol Chem	WB,IF
Poppy Datta	33961633	PLoS One	WB,IHC

Storage

Storage:

Store at -20°C. Stable for one year after shipment.

Storage Buffer:

PBS with 0.02% sodium azide and 50% glycerol, pH7.3

Aliquoting is unnecessary for -20°C storage

*** 20ul sizes contain 0.1% BSA

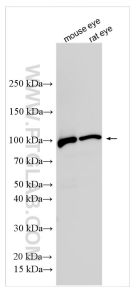
For technical support and original validation data for this product please contact:

T: 1 (888) 4PTGLAB (1-888-478-4522) (toll free in USA), or 1(312) 455-8498 (outside USA)

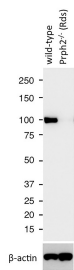
E: proteintech@ptglab.com
W: ptglab.com

This product is exclusively available under Proteintech Group brand and is not available to purchase from any other manufacturer.

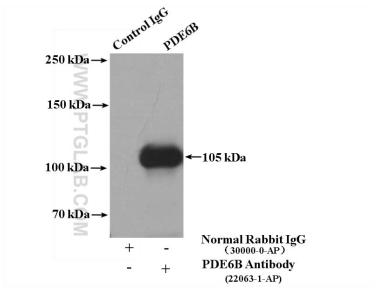
Selected Validation Data



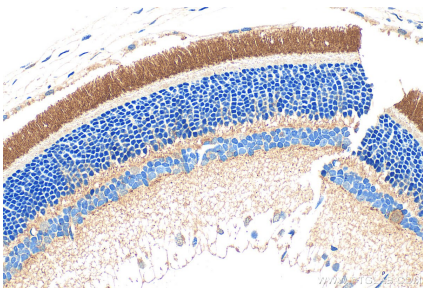
Various lysates were subjected to SDS PAGE followed by western blot with 22063-1-AP (PDE6B antibody) at dilution of 1:6000 incubated at room temperature for 1.5 hours.



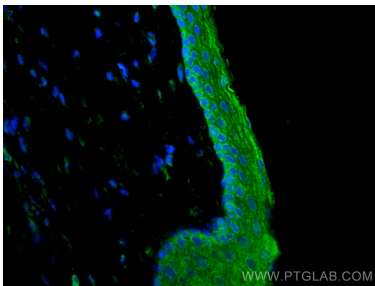
WB results of PDE6B antibody (22063-1-AP) with WT mouse Eye and Prph2 (Rds) mutant mouse Eye (Negative control). Courtesy of Seongjin Seo, PhD, University of Iowa College of Medicine.



IP result of anti-PDE6B (IP:22063-1-AP, 4ug; Detection:22063-1-AP 1:1000) with Y79 cells lysate 2000ug.



Immunohistochemical analysis of paraffin-embedded rat eye tissue slide using 22063-1-AP (PDE6B antibody) at dilution of 1:600 (under 40x lens). Heat mediated antigen retrieval with Tris-EDTA buffer (pH 9.0).



Immunofluorescent analysis of (4% PFA) fixed paraffin-embedded rat eye tissue using PDE6B antibody (22063-1-AP) at dilution of 1:200 and Coralite® 488-Conjugated Goat Anti-Rabbit IgG(H+L) (SA00013-2). Heat mediated antigen retrieval with Tris-EDTA buffer (pH 9.0).