

For Research Use Only

CDK8 Polyclonal antibody

Catalog Number: 22067-1-AP

Featured Product

4 Publications



Basic Information

Catalog Number:

22067-1-AP

Size:

150ul, Concentration: 450 µg/ml by Nanodrop and 267 µg/ml by Bradford method using BSA as the standard;

Source:

Rabbit

Isotype:

IgG

Immunogen Catalog Number:

AG17148

GenBank Accession Number:

BC069634

GeneID (NCBI):

1024

Full Name:

cyclin-dependent kinase 8

Calculated MW:

464 aa, 53 kDa

Observed MW:

53 kDa

Purification Method:

Antigen affinity purification

Recommended Dilutions:

WB 1:500-1:2000

IHC 1:20-1:200

IF 1:50-1:500

Applications

Tested Applications:

FC, IF, IHC, WB, ELISA

Cited Applications:

IHC, WB

Species Specificity:

human, mouse

Cited Species:

human, mouse

Note-IHC: suggested antigen retrieval with TE buffer pH 9.0; (*) Alternatively, antigen retrieval may be performed with citrate buffer pH 6.0

Positive Controls:

WB : HEK-293 cells, HeLa cells, NIH/3T3 cells, mouse embryo tissue

IHC : human stomach cancer tissue, human testis tissue

IF : NIH/3T3 cells,

Background Information

Notable Publications

Author	Pubmed ID	Journal	Application
Emily M Schleicher	33137164	PLoS Genet	WB
Lindsey M Jackson	34871431	Nucleic Acids Res	WB
M Li	37874495	Bull Exp Biol Med	WB,IHC

Storage

Storage:

Store at -20°C. Stable for one year after shipment.

Storage Buffer:

PBS with 0.02% sodium azide and 50% glycerol pH 7.3.

Aliquoting is unnecessary for -20°C storage

*** 20ul sizes contain 0.1% BSA

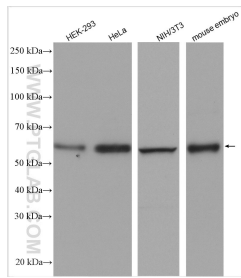
For technical support and original validation data for this product please contact:

T: 1 (888) 4PTGLAB (1-888-478-4522) (toll free in USA), or 1(312) 455-8498 (outside USA)

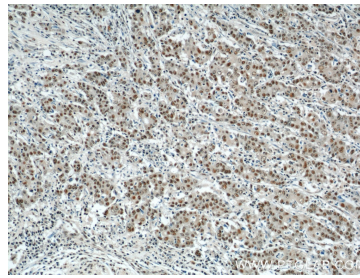
E: proteintech@ptglab.com
W: ptglab.com

This product is exclusively available under Proteintech Group brand and is not available to purchase from any other manufacturer.

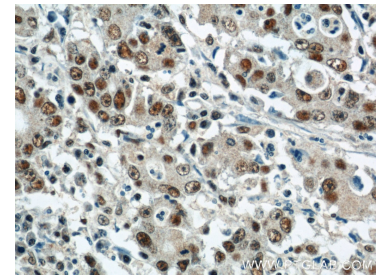
Selected Validation Data



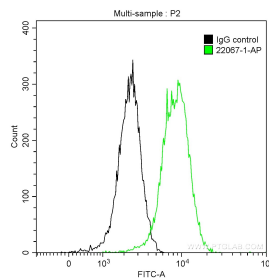
Various lysates were subjected to SDS PAGE followed by western blot with 22067-1-AP (CDK8 antibody) at dilution of 1:1000 incubated at room temperature for 1.5 hours.



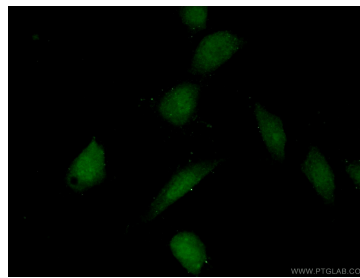
Immunohistochemical analysis of paraffin-embedded human stomach cancer using 22067-1-AP (CDK8 antibody) at dilution of 1:50 (under 10x lens).



Immunohistochemical analysis of paraffin-embedded human stomach cancer using 22067-1-AP (CDK8 antibody) at dilution of 1:50 (under 40x lens).



1×10^6 NIH/3T3 cells were intracellularly stained with 0.2 μ g Anti-Human CDK8 (22067-1-AP) and CoraLite®488-Conjugated AffiniPure Goat Anti-Rabbit IgG(H+L) at dilution 1:1000 (green), and 0.2 μ g Control Antibody. Cells were fixed with 90% MeOH.



Immunofluorescent analysis of (10% Formaldehyde) fixed NIH/3T3 cells using 22067-1-AP (CDK8 antibody) at dilution of 1:50 and Alexa Fluor 488-conjugated AffiniPure Goat Anti-Rabbit IgG(H+L).