

For Research Use Only

CCR10 Polyclonal antibody

Catalog Number: 22071-1-AP

4 Publications



Basic Information

Catalog Number: 22071-1-AP	GenBank Accession Number: BC099840	Purification Method: Antigen affinity purification
Size: 150ul, Concentration: 750 ug/ml by Nanodrop and 440 ug/ml by Bradford method using BSA as the standard;	GeneID (NCBI): 2826	Recommended Dilutions: WB 1:500-1:2000 IHC 1:20-1:200
Source: Rabbit	UNIPROT ID: P46092	
Isotype: IgG	Full Name: chemokine (C-C motif) receptor 10	
Immunogen Catalog Number: AG17212	Calculated MW: 362 aa, 38 kDa	
	Observed MW: 38-42 kDa	

Applications

Tested Applications: WB, IHC, ELISA	Positive Controls:
Cited Applications: WB, IHC	WB : mouse brain tissue, rat brain tissue
Species Specificity: human, mouse, rat	IHC : human spleen tissue,
Cited Species: human, mouse	
Note-IHC: suggested antigen retrieval with TE buffer pH 9.0; (*) Alternatively, antigen retrieval may be performed with citrate buffer pH 6.0	

Background Information

CCR10 (also known as GPR2) is a G-protein coupled receptor for chemokines CCL27 (SCYA27) and CCL28 (SCYA28). CCR10-CCL27 interactions are involved in T cell-mediated skin inflammation (PMID: 11821900). CCR10-CCL28 interactions are thought to contribute to the accumulation of IgA Ab-secreting cells (ASC) on mucosal surfaces.

Notable Publications

Author	Pubmed ID	Journal	Application
Zhenzhen Hui	33868236	Front Immunol	WB
YINGTING WU	34913072	Mol Med Rep	IHC
Nana Tao	38191481	Inflamm Regen	IHC

Storage

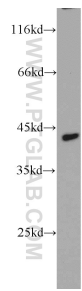
Storage:
Store at -20°C. Stable for one year after shipment.
Storage Buffer:
PBS with 0.02% sodium azide and 50% glycerol pH 7.3.
Aliquoting is unnecessary for -20°C storage

*** 20ul sizes contain 0.1% BSA

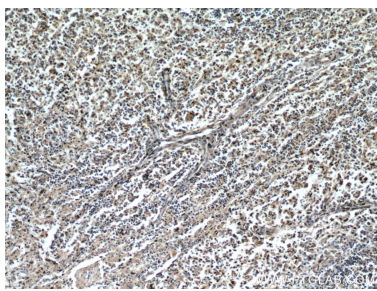
For technical support and original validation data for this product please contact:
T: 1 (888) 4PTGLAB (1-888-478-4522) (toll free in USA), or 1(312) 455-8498 (outside USA)
E: proteintech@ptglab.com
W: ptglab.com

This product is exclusively available under Proteintech Group brand and is not available to purchase from any other manufacturer.

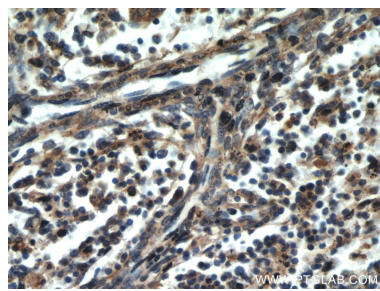
Selected Validation Data



mouse brain tissue were subjected to SDS PAGE followed by western blot with 22071-1-AP (CCR10 antibody) at dilution of 1:1000 incubated at room temperature for 1.5 hours.



Immunohistochemical analysis of paraffin-embedded human spleen using 22071-1-AP (CCR10 antibody) at dilution of 1:50 (under 10x lens).



Immunohistochemical analysis of paraffin-embedded human spleen using 22071-1-AP (CCR10 antibody) at dilution of 1:50 (under 40x lens).