

For Research Use Only

TLE3 Polyclonal antibody

Catalog Number: 22094-1-AP

Featured Product

1 Publications



Basic Information

Catalog Number:

22094-1-AP

Size:

150ul, Concentration: 500 ug/ml by Nanodrop and 400 ug/ml by Bradford method using BSA as the standard;

Source:

Rabbit

Isotype:

IgG

Immunogen Catalog Number:

AG17300

GenBank Accession Number:

BC015729

GeneID (NCBI):

7090

UNIPROT ID:

Q04726

Full Name:

transducin-like enhancer of split 3 (E(sp1) homolog, Drosophila)

Calculated MW:

772 aa, 83 kDa

Observed MW:

90 kDa

Purification Method:

Antigen affinity purification

Recommended Dilutions:

WB 1:1000-1:4000

IP 0.5-4.0 ug for 1.0-3.0 mg of total protein lysate

IHC 1:50-1:500

IF/ICC 1:300-1:1200

Applications

Tested Applications:

WB, IHC, IF/ICC, IP, ELISA

Cited Applications:

WB, IF

Species Specificity:

human, mouse, rat

Cited Species:

mouse

Note-IHC: suggested antigen retrieval with TE buffer pH 9.0; (*) Alternatively, antigen retrieval may be performed with citrate buffer pH 6.0

Positive Controls:

WB : HEK-293 cells, A431 cells, HepG2 cells

IP : HepG2 cells,

IHC : human lung cancer tissue, human breast cancer tissue

IF/ICC : HepG2 cells,

Background Information

Transducin-like enhancer of split 3 (TLE3) is a corepressor that binds to a variant of transcription factor, which mediated by CTNNB1 and TCF family members in Wnt signaling. It's suggested that effect of full-length TLE family members be regulated by association with dominant-negative AES.

Notable Publications

Author	Pubmed ID	Journal	Application
Sangho Lee	31569653	Cells	WB, IF

Storage

Storage:

Store at -20°C. Stable for one year after shipment.

Storage Buffer:

PBS with 0.02% sodium azide and 50% glycerol pH 7.3.

Aliquoting is unnecessary for -20°C storage

*** 20ul sizes contain 0.1% BSA

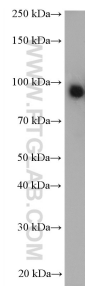
For technical support and original validation data for this product please contact:

T: 1 (888) 4PTGLAB (1-888-478-4522) (toll free in USA), or 1(312) 455-8498 (outside USA)

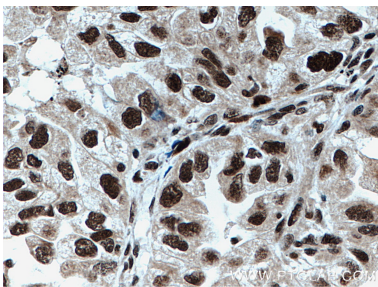
E: proteintech@ptglab.com
W: ptglab.com

This product is exclusively available under Proteintech Group brand and is not available to purchase from any other manufacturer.

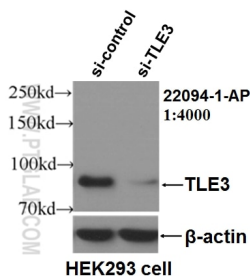
Selected Validation Data



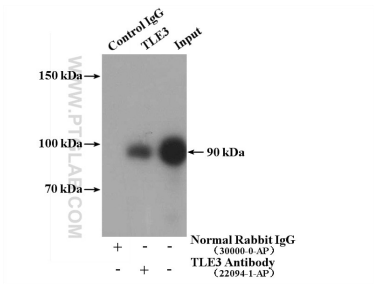
HEK-293 cells were subjected to SDS PAGE followed by western blot with 22094-1-AP (TLE3 antibody) at dilution of 1:2000 incubated at room temperature for 1.5 hours.



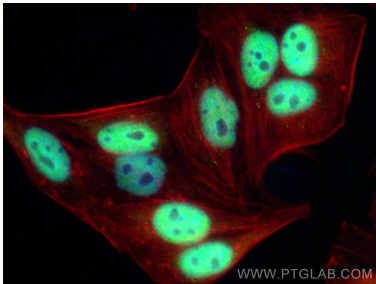
Immunohistochemical analysis of paraffin-embedded human lung cancer tissue slide using 22094-1-AP (TLE3 antibody) at dilution of 1:200 (under 40x lens. Heat mediated antigen retrieval with Tris-EDTA buffer (pH 9.0).



WB result of TLE3 antibody (22094-1-AP, 1:4000) with si-Control and si-TLE3 transfected HEK293 cells.



IP result of anti-TLE3 (IP:22094-1-AP, 4ug; Detection:22094-1-AP 1:1000) with HepG2 cells lysate 2400ug.



Immunofluorescent analysis of (4% PFA) fixed HepG2 cells using TLE3 antibody (22094-1-AP) at dilution of 1:600 and CoraLite®488-Conjugated AffiniPure Goat Anti-Rabbit IgG(H+L) (SA00013-2), CL594-Phalloidin (red).