

For Research Use Only

INSIG1 Polyclonal antibody

Catalog Number: 22115-1-AP

Featured Product

8 Publications



Basic Information

Catalog Number:

22115-1-AP

Size:

150ul, Concentration: 307 µg/ml by Bradford method using BSA as the standard;

Source:

Rabbit

Isotype:

IgG

Immunogen Catalog Number:

AG17420

GenBank Accession Number:

BC001880

GeneID (NCBI):

3638

UNIPROT ID:

O15503

Full Name:

insulin induced gene 1

Calculated MW:

277 aa, 30 kDa

Observed MW:

28-31 kDa, 66-70 kDa

Purification Method:

Antigen affinity purification

Recommended Dilutions:

WB 1:500-1:2000

IHC 1:20-1:200

Applications

Tested Applications:

WB, IHC, ELISA

Cited Applications:

WB, IF, IHC

Species Specificity:

human

Cited Species:

human

Positive Controls:

WB : A549 cells, HepG2 cells, SGC-7901 cells, MCF-7 cells

IHC : human liver tissue, human kidney tissue

Note-IHC: suggested antigen retrieval with TE buffer pH 9.0; (*) Alternatively, antigen retrieval may be performed with citrate buffer pH 6.0

Background Information

Insulin-induced genes (INSIGs), which consist of two isoforms (INSIG1 and INSIG2), are representative endoplasmic reticulum (ER)-resident oxysterol-binding proteins (OSBPs). INSIG1 is part of negative regulatory feedback, acting as a brake on SREBP transcriptional function (PMID: 23919961). INSIG1 also has a secondary function mediating sterol accelerated proteolytic degradation of HMG CoA reductase, thus impacting the mevalonate pathway. Suppression of INSIG1 function promotes hepatic lipid remodelling and restrains NASH (non-alcoholic steatohepatitis) progression (PMID: 33722690).

Notable Publications

| Author | Pubmed ID | Journal | Application |
|---------------|-----------|-------------------|-------------|
| H L Cai | 26485545 | Transl Psychiatry | WB |
| Yingying Xu | 34622799 | JCI Insight | IF |
| Yingchun Wang | 36450259 | Cell Rep | WB |

Storage

Storage:

Store at -20°C. Stable for one year after shipment.

Storage Buffer:

PBS with 0.02% sodium azide and 50% glycerol pH 7.3.

Aliquoting is unnecessary for -20°C storage

*** 20ul sizes contain 0.1% BSA

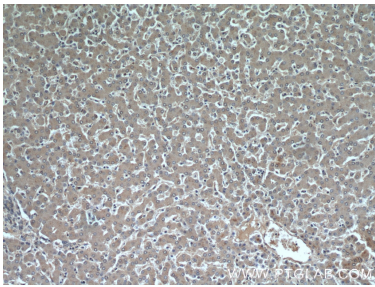
For technical support and original validation data for this product please contact:

T: 1 (888) 4PTGLAB (1-888-478-4522) (toll free in USA), or 1(312) 455-8498 (outside USA)

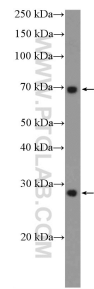
E: proteintech@ptglab.com
W: ptglab.com

This product is exclusively available under Proteintech Group brand and is not available to purchase from any other manufacturer.

Selected Validation Data



Immunohistochemical analysis of paraffin-embedded human liver using 22115-1-AP (INSIG1 antibody) at dilution of 1:50 (under 10x lens).



A549 cells were subjected to SDS PAGE followed by western blot with 22115-1-AP (INSIG1 Antibody) at dilution of 1:1000 incubated at room temperature for 1.5 hours.