

For Research Use Only

ENDO G Polyclonal antibody

Catalog Number: 22148-1-AP

Featured Product

11 Publications



Basic Information

Catalog Number:

22148-1-AP

Size:

150ul, Concentration: 400 ug/ml by Nanodrop;

Source:

Rabbit

Isotype:

IgG

Immunogen Catalog Number:

AG17739

GenBank Accession Number:

BC016351

GeneID (NCBI):

2021

UNIPROT ID:

Q14249

Full Name:

endonuclease G

Calculated MW:

297 aa, 33 kDa

Observed MW:

27-30 kDa

Purification Method:

Antigen affinity purification

Recommended Dilutions:

WB 1:2000-1:16000

IP 0.5-4.0 ug for 1.0-3.0 mg of total protein lysate

IHC 1:400-1:1600

Applications

Tested Applications:

WB, IHC, IP, ELISA

Cited Applications:

WB, IHC, IF

Species Specificity:

human, mouse, rat

Cited Species:

human, mouse, rat

Note-IHC: suggested antigen retrieval with TE buffer pH 9.0; (*) Alternatively, antigen retrieval may be performed with citrate buffer pH 6.0

Positive Controls:

WB : mouse heart tissue, mouse kidney tissue, mouse liver tissue, mouse skeletal muscle tissue, rat kidney tissue, rat liver tissue

IP : mouse heart tissue,

IHC : human ovary cancer tissue,

Background Information

Endonuclease G, also named as EndoG, is a mitochondrial protein. It's a nuclease which was first characterized in bovine heart mitochondrial extracts. It's involved in many cellular process, including apoptosis, paternal mitochondrial elimination and autophagy (PMID:33473107). It is a nuclear encoded, sugar-non-specific (PMID:15066427) and well-conserved nuclease (PMID:17244531). It can be released from the mitochondria and translocated to the nucleus where it induces fragmentation of DNA, leading to apoptosis (PMID:11452314). EndoG is a 297-amino-acid long protein with a molecular weight of 30-35 kDa. There is a homodimer form with MW about 60-70 kDa.

Notable Publications

Author	Pubmed ID	Journal	Application
Han Liao	26415619	Chem Biol Interact	WB
Maria Luisa Valle	36241022	Mol Cell Neurosci	WB
Weichen Xiong	34025394	Front Pharmacol	WB

Storage

Storage:

Store at -20°C. Stable for one year after shipment.

Storage Buffer:

PBS with 0.02% sodium azide and 50% glycerol pH 7.3.

Aliquoting is unnecessary for -20°C storage

*** 20ul sizes contain 0.1% BSA

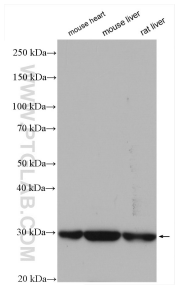
For technical support and original validation data for this product please contact:

T: 1 (888) 4PTGLAB (1-888-478-4522) (toll free in USA), or 1(312) 455-8498 (outside USA)

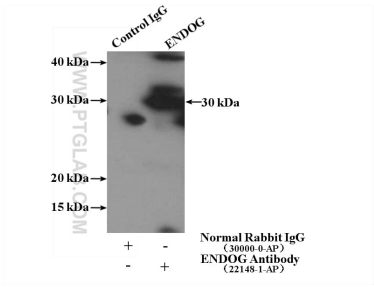
E: proteintech@ptglab.com
W: ptglab.com

This product is exclusively available under Proteintech Group brand and is not available to purchase from any other manufacturer.

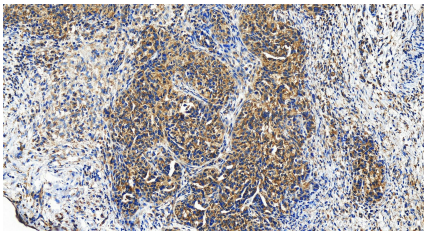
Selected Validation Data



Various lysates were subjected to SDS PAGE followed by western blot with 22148-1-AP (ENDOG antibody) at dilution of 1:8000 incubated at room temperature for 1.5 hours.



IP result of anti-ENDOG (IP:22148-1-AP, 4ug; Detection:22148-1-AP 1:1000) with mouse heart tissue lysate 4000ug.



Immunohistochemical analysis of paraffin-embedded human ovary cancer tissue slide using 22148-1-AP (ENDOG antibody) at dilution of 1:800 (under 20x lens). Heat mediated antigen retrieval with Tris-EDTA buffer (pH 9.0).