

For Research Use Only

LPAR4 Polyclonal antibody

Catalog Number: 22165-1-AP

1 Publications



Basic Information

Catalog Number: 22165-1-AP	GenBank Accession Number: BC069996	Purification Method: Antigen affinity purification
Size: 150ul , Concentration: 600 ug/ml by Nanodrop and 400 ug/ml by Bradford method using BSA as the standard;	GeneID (NCBI): 2846	Recommended Dilutions: WB 1:500-1:2000
Source: Rabbit	UNIPROT ID: Q99677	IHC 1:20-1:200
Isotype: IgG	Full Name: lysophosphatidic acid receptor 4	IF/ICC 1:50-1:500
Immunogen Catalog Number: AG17817	Calculated MW: 370 aa, 42 kDa	
	Observed MW: 42-50 kDa	

Applications

Tested Applications: WB, IHC, IF/ICC, ELISA	Positive Controls:
Cited Applications: WB	WB : SKOV-3 cells, mouse brain tissue, HL-60 cells, 3T3-L1 cells
Species Specificity: human, mouse, rat	IHC : human ovary tissue,
Cited Species: human	IF/ICC : SW 1990 cells,
Note-IHC: suggested antigen retrieval with TE buffer pH 9.0; (*) Alternatively, antigen retrieval may be performed with citrate buffer pH 6.0	

Notable Publications

Author	Pubmed ID	Journal	Application
Chengsheng Wu	36646789	Nat Cell Biol	WB

Storage

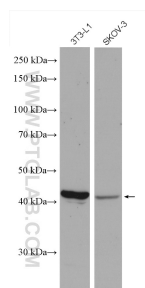
Storage:
Store at -20°C. Stable for one year after shipment.
Storage Buffer:
PBS with 0.02% sodium azide and 50% glycerol pH 7.3.
Aliquoting is unnecessary for -20°C storage

*** 20ul sizes contain 0.1% BSA

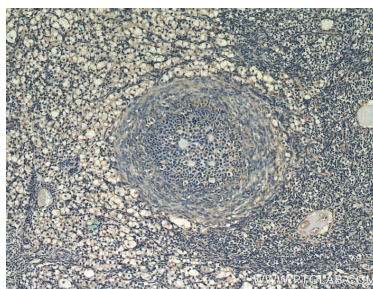
For technical support and original validation data for this product please contact:
T: 1 (888) 4PTGLAB (1-888-478-4522) (toll free in USA), or 1(312) 455-8498 (outside USA)
E: proteintech@ptglab.com
W: ptglab.com

This product is exclusively available under Proteintech Group brand and is not available to purchase from any other manufacturer.

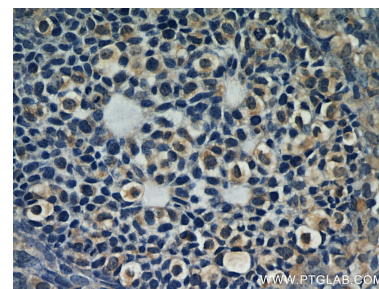
Selected Validation Data



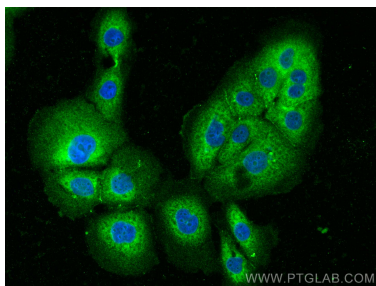
SKOV-3 cells were subjected to SDS PAGE followed by western blot with 22165-1-AP (LPAR4 antibody) at dilution of 1:1000 incubated at room temperature for 1.5 hours.



Immunohistochemical analysis of paraffin-embedded human ovary using 22165-1-AP (LPAR4 antibody) at dilution of 1:50 (under 10x lens).



Immunohistochemical analysis of paraffin-embedded human ovary using 22165-1-AP (LPAR4 antibody) at dilution of 1:50 (under 40x lens).



Immunofluorescent analysis of (-20°C Ethanol) fixed SW 1990 cells using LPAR4 antibody (22165-1-AP) at dilution of 1:200 and CoraLite®488-Conjugated Goat Anti-Rabbit IgG(H+L).