

For Research Use Only

ARHGAP21 Polyclonal antibody

Catalog Number: 22183-1-AP

2 Publications



Basic Information

Catalog Number: 22183-1-AP	GenBank Accession Number: BC118915	Purification Method: Antigen affinity purification
Size: 150ul , Concentration: 700 µg/ml by Nanodrop and 553 µg/ml by Bradford method using BSA as the standard;	GeneID (NCBI): 57584	Recommended Dilutions: WB 1:1000-1:6000 IHC 1:50-1:200 IF 1:20-1:200
Source: Rabbit	Full Name: Rho GTPase activating protein 21	
Isotype: IgG	Calculated MW: 1957 aa, 217 kDa	
Immunogen Catalog Number: AG16515	Observed MW: 250 kDa	

Applications

Tested Applications: IF, IHC, WB, ELISA	Positive Controls: WB : HeLa cells, PC-3 cells
Cited Applications: IF, WB	IHC : human ovary tissue, human prostate cancer tissue
Species Specificity: human, rat	IF : HepG2 cells,
Cited Species: human	
Note-IHC: suggested antigen retrieval with TE buffer pH 9.0; (*) Alternatively, antigen retrieval may be performed with citrate buffer pH 6.0	

Background Information

Notable Publications

Author	Pubmed ID	Journal	Application
Arman Javadi	28749339	Elife	WB,IF
Meng Zhang	37163606	Sci Adv	WB

Storage

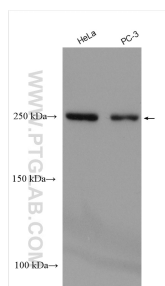
Storage:
Store at -20°C. Stable for one year after shipment.
Storage Buffer:
PBS with 0.02% sodium azide and 50% glycerol pH 7.3.
Aliquoting is unnecessary for -20°C storage

*** 20ul sizes contain 0.1% BSA

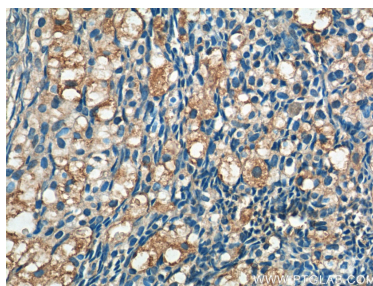
For technical support and original validation data for this product please contact:
T: 1 (888) 4PTGLAB (1-888-478-4522) (toll free in USA), or 1(312) 455-8498 (outside USA)
E: proteintech@ptglab.com
W: ptglab.com

This product is exclusively available under Proteintech Group brand and is not available to purchase from any other manufacturer.

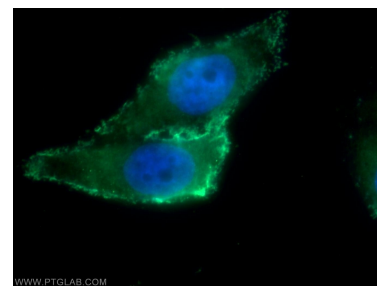
Selected Validation Data



Various lysates were subjected to SDS PAGE followed by western blot with 22183-1-AP (ARHGAP21 antibody) at dilution of 1:3000 incubated at room temperature for 1.5 hours.



Immunohistochemical analysis of paraffin-embedded human ovary tissue slide using 22183-1-AP (ARHGAP21 Antibody) at dilution of 1:50 (under 40x Lens).



Immunofluorescent analysis of HepG2 cells using 22183-1-AP (ARHGAP21 antibody) at dilution of 1:50 and Alexa Fluor 488-conjugated AffiniPure Goat Anti-Rabbit IgG(H+L).