

For Research Use Only

CHRNA4 Polyclonal antibody

Catalog Number: 22192-1-AP

Featured Product

4 Publications



Basic Information

Catalog Number:

22192-1-AP

Size:

150ul, Concentration: 650 ug/ml by Nanodrop and 500 ug/ml by Bradford method using BSA as the standard;

Source:

Rabbit

Isotype:

IgG

Immunogen Catalog Number:

AG16767

GenBank Accession Number:

BC096080

GeneID (NCBI):

1143

UNIPROT ID:

P30926

Full Name:

cholinergic receptor, nicotinic, beta 4

Calculated MW:

498 aa, 56 kDa

Observed MW:

48-60 kDa

Purification Method:

Antigen affinity purification

Recommended Dilutions:

WB 1:1000-1:4000

Applications

Tested Applications:

WB, ELISA

Cited Applications:

WB

Species Specificity:

human, mouse

Cited Species:

human

Positive Controls:

WB: SH-SY5Y cells, HeLa cells, mouse testis tissue

Notable Publications

Author	Pubmed ID	Journal	Application
Jiang Qian	31634461	Eur J Pharmacol	WB
Yi-Hsuan Chuang	32455963	Cancers (Basel)	WB
Zhihua Sun	31963558	Mar Drugs	FC

Storage

Storage:

Store at -20°C. Stable for one year after shipment.

Storage Buffer:

PBS with 0.02% sodium azide and 50% glycerol pH 7.3.

Aliquoting is unnecessary for -20°C storage

*** 20ul sizes contain 0.1% BSA

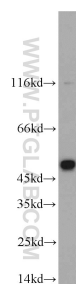
For technical support and original validation data for this product please contact:

T: 1 (888) 4PTGLAB (1-888-478-4522) (toll free in USA), or 1(312) 455-8498 (outside USA)

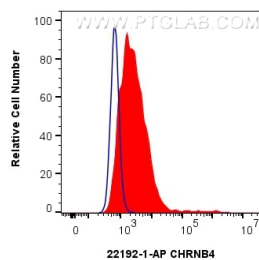
E: proteintech@ptglab.com
W: ptglab.com

This product is exclusively available under Proteintech Group brand and is not available to purchase from any other manufacturer.

Selected Validation Data



SH-SY5Y cells were subjected to SDS PAGE followed by western blot with 22192-1-AP (CHRNA4 antibody) at dilution of 1:2000 incubated at room temperature for 1.5 hours.



1x10⁶ SH-SY5Y cells were surface stained with 0.4 ug CHRNA4 Polyclonal antibody (22192-1-AP) and CoraLite® 488-Conjugated Goat Anti-Rabbit IgG(H+L) (SA00013-2)(red), or 0.4 ug Rabbit IgG control Rabbit PolyAb (30000-0-AP) (blue). Cells were not fixed.