

For Research Use Only

CSE1L Polyclonal antibody

Catalog Number: 22219-1-AP

Featured Product

10 Publications



Basic Information

Catalog Number:

22219-1-AP

Size:

150ul, Concentration: 350 ug/ml by Nanodrop and 187 ug/ml by Bradford method using BSA as the standard;

Source:

Rabbit

Isotype:

IgG

Immunogen Catalog Number:

AG17556

GenBank Accession Number:

BC109313

GeneID (NCBI):

1434

UNIPROT ID:

P55060

Full Name:

CSE1 chromosome segregation 1-like (yeast)

Calculated MW:

971 aa, 110 kDa

Observed MW:

100-110 kDa

Purification Method:

Antigen affinity purification

Recommended Dilutions:

WB 1:1000-1:4000

IP 0.5-4.0 ug for 1.0-3.0 mg of total protein lysate

IHC 1:50-1:500

Applications

Tested Applications:

WB, IP, IHC, ELISA

Cited Applications:

WB, IHC, IF

Species Specificity:

human, mouse

Cited Species:

human, mouse

Note-IHC: suggested antigen retrieval with TE buffer pH 9.0; (*) Alternatively, antigen retrieval may be performed with citrate buffer pH 6.0

Positive Controls:

WB : HEK-293 cells, HeLa cells, Jurkat cells, mouse testis tissue, RAW264.7, MCF-7 cells, Ramos cells, NIH/3T3 cells

IP : HEK-293 cells,

IHC : human placenta tissue, mouse testis tissue

Background Information

CSE1L (Chromosome Segregation 1-Like) is located on 20q13.13, and encodes a 971-amino-acid protein. It associates with microtubules and mitotic spindles, and is also considered to have a role in tumor progression. The CSE1L protein includes a nuclear localization signal allowing for transport into the nucleus via the importin-alpha/beta heterodimer. In addition, CSE1L plays roles in cell proliferation and apoptosis.

Notable Publications

Author	Pubmed ID	Journal	Application
Chiara Bellio	35626166	Cancers (Basel)	WB
Joseph Hiatt	33979618	Cell Rep	WB
Xiao Zhang	33854580	J Cancer	WB

Storage

Storage:

Store at -20°C. Stable for one year after shipment.

Storage Buffer:

PBS with 0.02% sodium azide and 50% glycerol pH 7.3.

Aliquoting is unnecessary for -20°C storage

*** 20ul sizes contain 0.1% BSA

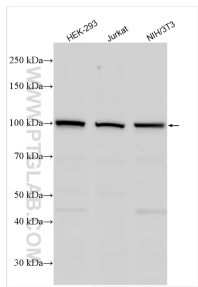
For technical support and original validation data for this product please contact:

T: 1 (888) 4PTGLAB (1-888-478-4522) (toll free in USA), or 1(312) 455-8498 (outside USA)

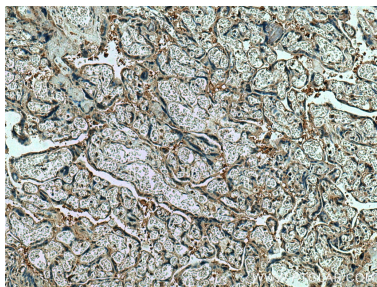
E: proteintech@ptglab.com
W: ptglab.com

This product is exclusively available under Proteintech Group brand and is not available to purchase from any other manufacturer.

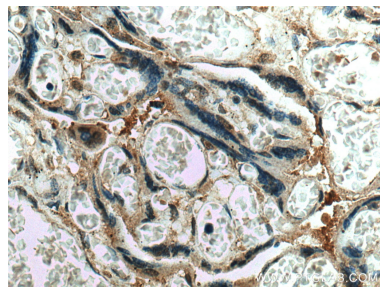
Selected Validation Data



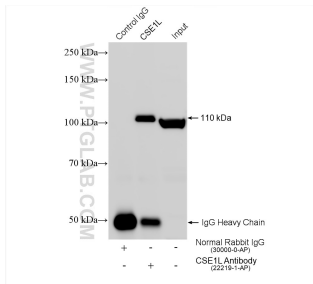
Various lysates were subjected to SDS PAGE followed by western blot with 22219-1-AP (CSE1L antibody) at dilution of 1:2000 incubated at room temperature for 1.5 hours.



Immunohistochemical analysis of paraffin-embedded human placenta tissue slide using 22219-1-AP (CSE1L antibody) at dilution of 1:200 (under 10x lens). Heat mediated antigen retrieval with Tris-EDTA buffer (pH 9.0).



Immunohistochemical analysis of paraffin-embedded human placenta tissue slide using 22219-1-AP (CSE1L antibody) at dilution of 1:200 (under 40x lens). Heat mediated antigen retrieval with Tris-EDTA buffer (pH 9.0).



IP result of anti-CSE1L (IP:22219-1-AP, 4ug; Detection:22219-1-AP 1:2000) with HEK-293 cells lysate 1400 ug.