

For Research Use Only

TIMM50 Polyclonal antibody

Catalog Number: 22229-1-AP

12 Publications



Basic Information

Catalog Number:

22229-1-AP

Size:

150ul, Concentration: 500 ug/ml by Nanodrop;

Source:

Rabbit

Isotype:

IgG

Immunogen Catalog Number:

AG17574

GenBank Accession Number:

BC121147

GeneID (NCBI):

92609

UNIPROT ID:

Q3ZCQ8

Full Name:

translocase of inner mitochondrial membrane 50 homolog (S. cerevisiae)

Calculated MW:

456 aa, 50 kDa

Observed MW:

35-40 kDa

Purification Method:

Antigen Affinity purified

Recommended Dilutions:

WB 1:1000-1:6000

IP 0.5-4.0 ug for 1.0-3.0 mg of total protein lysate

IHC 1:20-1:200

IF/ICC 1:50-1:500

Applications

Tested Applications:

WB, IHC, IF/ICC, IP, ELISA

Cited Applications:

WB, IF, IP, RIP

Species Specificity:

human, mouse

Cited Species:

human, mouse

Note-IHC: suggested antigen retrieval with TE buffer pH 9.0; (*) Alternatively, antigen retrieval may be performed with citrate buffer pH 6.0

Positive Controls:

WB: HEK-293 cells,

IP: HeLa cells,

IHC: human kidney tissue, human liver tissue

IF/ICC: HepG2 cells,

Notable Publications

Author	Pubmed ID	Journal	Application
Anna Klucnika	36355348	J Cell Biol	WB
Maxence Le Vasseur	34034859	Elife	WB
Zhuzhu Guan	32130753	Cell Prolif	WB, RIP

Storage

Storage:

Store at -20°C. Stable for one year after shipment.

Storage Buffer:

PBS with 0.02% sodium azide and 50% glycerol, pH7.3

Aliquoting is unnecessary for -20°C storage

*** 20ul sizes contain 0.1% BSA

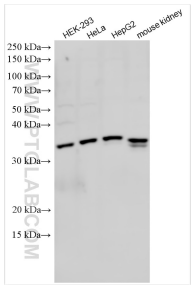
For technical support and original validation data for this product please contact:

T: 1 (888) 4PTGLAB (1-888-478-4522) (toll free in USA), or 1(312) 455-8498 (outside USA)

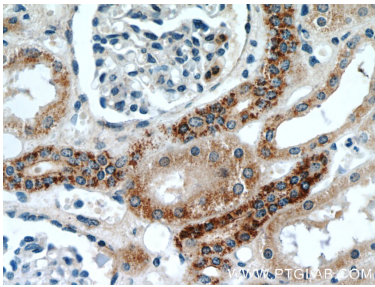
E: proteintech@ptglab.com
W: ptglab.com

This product is exclusively available under Proteintech Group brand and is not available to purchase from any other manufacturer.

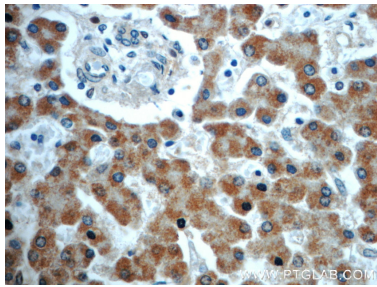
Selected Validation Data



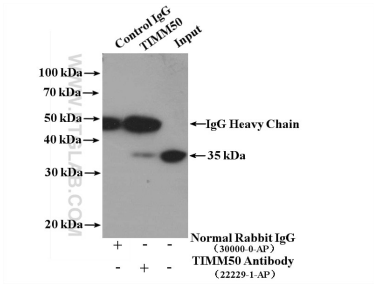
Various lysates were subjected to SDS PAGE followed by western blot with 22229-1-AP (TIMM50 antibody) at dilution of 1:3000 incubated at room temperature for 1.5 hours.



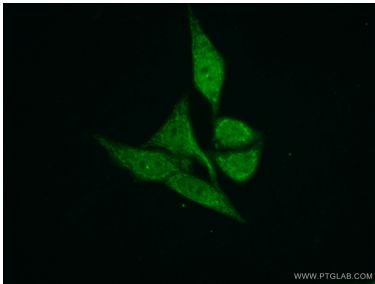
Immunohistochemical analysis of paraffin-embedded human kidney slide using 22229-1-AP (TIMM50 Antibody) at dilution of 1:50.



Immunohistochemical analysis of paraffin-embedded human liver slide using 22229-1-AP (TIMM50 Antibody) at dilution of 1:50.



IP result of anti-TIMM50 (IP:22229-1-AP, 4ug; Detection:22229-1-AP 1:1000) with HeLa cells lysate 3200ug.



Immunofluorescent analysis of (10% Formaldehyde) fixed HepG2 cells using 22229-1-AP (TIMM50 antibody) at dilution of 1:50 and Alexa Fluor 488-conjugated AffiniPure Goat Anti-Rabbit IgG(H+L).