

For Research Use Only

HIP1 Polyclonal antibody

Catalog Number: 22231-1-AP

Featured Product

3 Publications



Basic Information

Catalog Number:

22231-1-AP

Size:

150ul, Concentration: 850 ug/ml by Nanodrop and 407 ug/ml by Bradford method using BSA as the standard;

Source:

Rabbit

Isotype:

IgG

Immunogen Catalog Number:

AG17576

GenBank Accession Number:

BC110545

GeneID (NCBI):

3092

UNIPROT ID:

O00291

Full Name:

huntingtin interacting protein 1

Calculated MW:

1037 aa, 116 kDa

Observed MW:

116 kDa

Purification Method:

Antigen Affinity purified

Recommended Dilutions:

WB 1:1000-1:5000

IP 0.5-4.0 ug for 1.0-3.0 mg of total protein lysate

IHC 1:50-1:500

IF/ICC 1:50-1:500

Applications

Tested Applications:

WB, IHC, IF/ICC, IP, ELISA

Cited Applications:

WB, IHC

Species Specificity:

human, mouse

Cited Species:

human

Positive Controls:

WB : DU 145 cells, PC-3 cells, human brain tissue, A549 cells, HeLa cells

IP : HeLa cells,

IHC : human prostate cancer tissue, human brain tissue, human colon cancer tissue, mouse brain tissue

IF/ICC : A549 cells,

Note-IHC: suggested antigen retrieval with TE buffer pH 9.0; (*) Alternatively, antigen retrieval may be performed with citrate buffer pH 6.0

Notable Publications

Author	Pubmed ID	Journal	Application
Ying Sun	33363616	Oncol Lett	WB,IHC
Basak Icli	30668922	FASEB J	WB
Ping Lan	37994157	Acta Biochim Biophys Sin (Shanghai)	WB

Storage

Storage:

Store at -20°C. Stable for one year after shipment.

Storage Buffer:

PBS with 0.02% sodium azide and 50% glycerol pH 7.3.

Aliquoting is unnecessary for -20°C storage

*** 20ul sizes contain 0.1% BSA

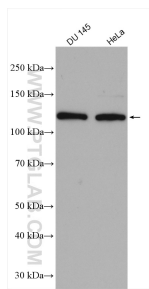
For technical support and original validation data for this product please contact:

T: 1 (888) 4PTGLAB (1-888-478-4522) (toll free in USA), or 1(312) 455-8498 (outside USA)

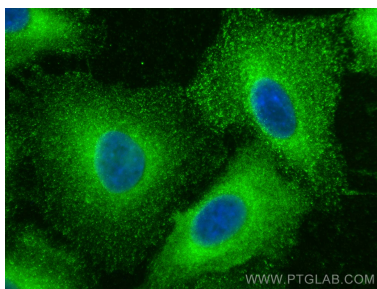
E: proteintech@ptglab.com
W: ptglab.com

This product is exclusively available under Proteintech Group brand and is not available to purchase from any other manufacturer.

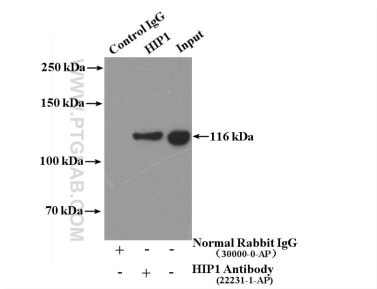
Selected Validation Data



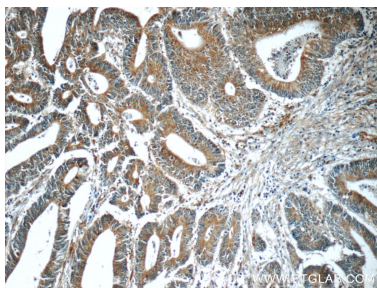
Various lysates were subjected to SDS PAGE followed by western blot with 22231-1-AP (HIP1 antibody) at dilution of 1:5000 incubated at room temperature for 1.5 hours.



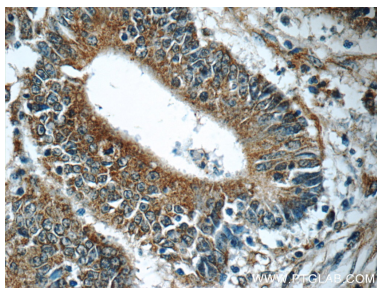
Immunofluorescent analysis of (-20°C Methanol) fixed A549 cells using HIP1 antibody (22231-1-AP) at dilution of 1:200 and CoraLite®488-Conjugated Goat Anti-Rabbit IgG(H+L) (SA00013-2).



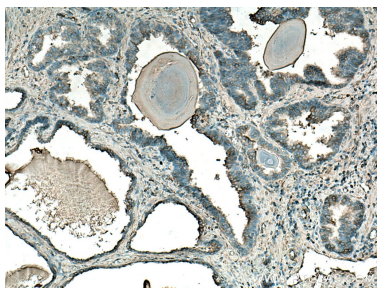
IP result of anti-HIP1 (IP:22231-1-AP, 4ug; Detection:22231-1-AP 1:1000) with HeLa cells lysate 2500ug.



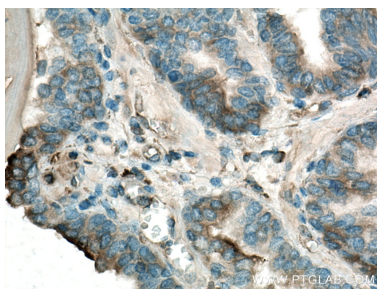
Immunohistochemical analysis of paraffin-embedded human colon cancer tissue slide using 22231-1-AP (HIP1 Antibody) at dilution of 1:50 (under 10x lens).



Immunohistochemical analysis of paraffin-embedded human colon cancer tissue slide using 22231-1-AP (HIP1 Antibody) at dilution of 1:50 (under 40x lens).



Immunohistochemical analysis of paraffin-embedded human prostate cancer tissue slide using 22231-1-AP (HIP1 antibody) at dilution of 1:200 (under 10x lens). Heat mediated antigen retrieval with Tris-EDTA buffer (pH 9.0).



Immunohistochemical analysis of paraffin-embedded human prostate cancer tissue slide using 22231-1-AP (HIP1 antibody) at dilution of 1:200 (under 40x lens). Heat mediated antigen retrieval with Tris-EDTA buffer (pH 9.0).