

For Research Use Only

C4 Alpha Chain/C4b/C4d Polyclonal antibody

Catalog Number: 22233-1-AP

Featured Product

7 Publications



Basic Information

Catalog Number:

22233-1-AP

Size:

150ul, Concentration: 700 ug/ml by Nanodrop;

Source:

Rabbit

Isotype:

IgG

Immunogen Catalog Number:

AG17583

GenBank Accession Number:

BC063289

GeneID (NCBI):

720

UNIPROT ID:

POCOL4

Full Name:

complement component 4A (Rodgers blood group)

Calculated MW:

1744 aa, 193 kDa

Observed MW:

80-95 kDa, 200 kDa

Purification Method:

Antigen affinity purification

Recommended Dilutions:

WB 1:4000-1:40000

IP 0.5-4.0 ug for 1.0-3.0 mg of total protein lysate

IHC 1:50-1:500

Applications

Tested Applications:

WB, IP, IHC, ELISA

Cited Applications:

WB, IHC, CoIP

Species Specificity:

human, mouse

Cited Species:

human, mouse

Positive Controls:

WB: L02 cells, human blood, mouse liver tissue

IP: L02 cells,

IHC: human liver tissue,

Note-IHC: suggested antigen retrieval with TE buffer pH 9.0; (*) Alternatively, antigen retrieval may be performed with citrate buffer pH 6.0

Background Information

Complement C4, a component of the classical complement pathway, has an important role in innate immune function. C4 protein is expressed as a single chain precursor which is proteolytically cleaved into a trimer of alpha, beta, and gamma chains (molecular weights 95, 78, and 31 kDa) prior to secretion. The alpha chain is cleaved to release C4 anaphylatoxin, an antimicrobial peptide and a mediator of local inflammation. This antibody raised against 1017-1336aa of human C4-A protein can recognize C4 precursor, C4 alpha chain, C4b, and C4d.

Notable Publications

Author	Pubmed ID	Journal	Application
Robert W Hu	33134491	Transplant Direct	WB
Anabella A Barrios	31178241	Immunobiology	WB
Jieling Liang	39806768	Ren Fail	WB,IHC

Storage

Storage:

Store at -20°C. Stable for one year after shipment.

Storage Buffer:

PBS with 0.02% sodium azide and 50% glycerol pH 7.3.

Aliquoting is unnecessary for -20°C storage

*** 20ul sizes contain 0.1% BSA

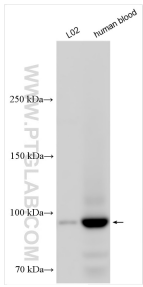
For technical support and original validation data for this product please contact:

T: 1 (888) 4PTGLAB (1-888-478-4522) (toll free in USA), or 1(312) 455-8498 (outside USA)

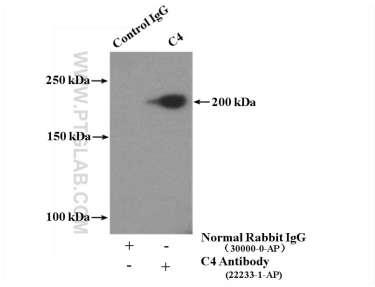
E: proteintech@ptglab.com
W: ptglab.com

This product is exclusively available under Proteintech Group brand and is not available to purchase from any other manufacturer.

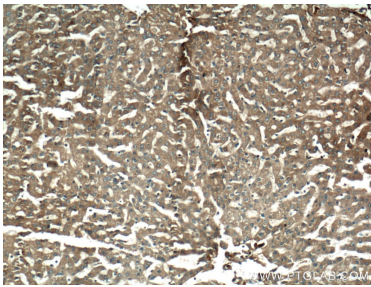
Selected Validation Data



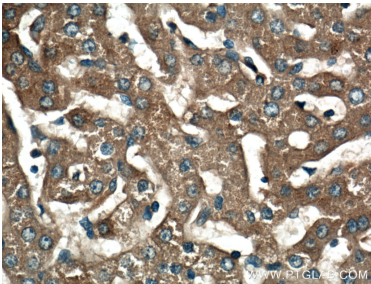
Various lysates were subjected to SDS PAGE followed by western blot with 22233-1-AP (C4 Alpha Chain/C4b/C4d antibody) at dilution of 1:15000 incubated at room temperature for 1.5 hours.



IP result of anti-C4 Alpha Chain/C4b/C4d (IP:22233-1-AP, 4ug; Detection:22233-1-AP 1:1000) with L02 cells lysate 2000ug.



Immunohistochemical analysis of paraffin-embedded human liver tissue slide using 22233-1-AP (C4 alpha chain/C4b/C4d antibody) at dilution of 1:200 (under 10x lens).



Immunohistochemical analysis of paraffin-embedded human liver tissue slide using 22233-1-AP (C4 alpha chain/C4b/C4d antibody) at dilution of 1:200 (under 40x lens).