

For Research Use Only

# ASF1A-specific Polyclonal antibody

Catalog Number: 22259-1-AP

Featured Product

1 Publications



## Basic Information

<b>Catalog Number:</b> 22259-1-AP	<b>GenBank Accession Number:</b> BC010878	<b>Purification Method:</b> Antigen affinity purification
<b>Size:</b> 150ul , Concentration: 1000 µg/ml by Nanodrop and 493 µg/ml by Bradford method using BSA as the standard;	<b>GeneID (NCBI):</b> 25842	<b>Recommended Dilutions:</b> WB 1:1000-1:4000 IF 1:50-1:500
<b>Source:</b> Rabbit	<b>Full Name:</b> ASF1 anti-silencing function 1 homolog A (S. cerevisiae)	
<b>Isotype:</b> IgG	<b>Calculated MW:</b> 204 aa, 23 kDa	
<b>Immunogen Catalog Number:</b> AG17764	<b>Observed MW:</b> 20-23 kDa	

## Applications

<b>Tested Applications:</b> IF, WB, ELISA	<b>Positive Controls:</b> WB : HeLa cells, HepG2 cells IF : NIH/3T3 cells,
<b>Cited Applications:</b> IF, WB	
<b>Species Specificity:</b> human, mouse, rat	
<b>Cited Species:</b> human	

## Background Information

This gene encodes a member of the H3/H4 family of histone chaperone proteins and is similar to the anti-silencing function-1 gene in yeast. The protein is a key component of a histone donor complex that functions in nucleosome assembly. It interacts with histones H3 and H4, and functions together with a chromatin assembly factor during DNA replication and repair. This antibody is specific to the 23kd ASF1A protein.

## Notable Publications

Author	Pubmed ID	Journal	Application
Sumin Feng	35177609	Nat Commun	WB,IF

## Storage

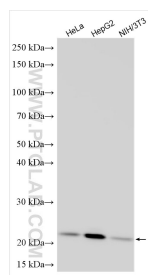
**Storage:**  
Store at -20°C. Stable for one year after shipment.  
**Storage Buffer:**  
PBS with 0.02% sodium azide and 50% glycerol pH 7.3.  
Aliquoting is unnecessary for -20°C storage

\*\*\* 20ul sizes contain 0.1% BSA

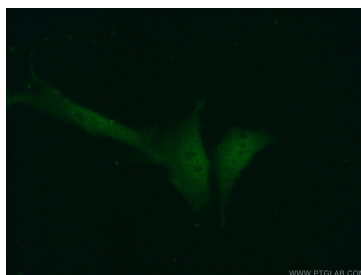
For technical support and original validation data for this product please contact:  
T: 1 (888) 4PTGLAB (1-888-478-4522) (toll free in USA), or 1(312) 455-8498 (outside USA)  
E: proteintech@ptglab.com  
W: ptglab.com

This product is exclusively available under Proteintech Group brand and is not available to purchase from any other manufacturer.

## Selected Validation Data



Various lysates were subjected to SDS PAGE followed by western blot with 22259-1-AP (ASF1A-specific antibody) at dilution of 1:2000 incubated at room temperature for 1.5 hours.



Immunofluorescent analysis of (10% Formaldehyde) fixed NIH/3T3 cells using 22259-1-AP (ASF1A antibody) at dilution of 1:50 and Alexa Fluor 488-conjugated AffiniPure Goat Anti-Rabbit IgG(H+L).