

For Research Use Only

# Giantin Polyclonal antibody

Catalog Number: 22270-1-AP

7 Publications



## Basic Information

### Catalog Number:

22270-1-AP

### Size:

150ul, Concentration: 540 ug/ml by Bradford method using BSA as the standard;

### Source:

Rabbit

### Isotype:

IgG

### GenBank Accession Number:

NM\_004487

### GeneID (NCBI):

2804

### UNIPROT ID:

Q14789

### Full Name:

golgin B1, golgi integral membrane protein

### Calculated MW:

376 kDa

### Observed MW:

376 kDa

### Purification Method:

Antigen affinity purification

### Recommended Dilutions:

WB 1:500-1:1000

IHC 1:250-1:1000

IF/ICC 1:50-1:500

## Applications

### Tested Applications:

WB, IHC, IF/ICC, ELISA

### Cited Applications:

WB, IF

### Species Specificity:

human

### Cited Species:

human, monkey

**Note-IHC: suggested antigen retrieval with TE buffer pH 9.0; (\*) Alternatively, antigen retrieval may be performed with citrate buffer pH 6.0**

### Positive Controls:

WB: HEK-293 cells, HeLa cells

IHC: mouse kidney tissue,

IF/ICC: HepG2 cells, HeLa cells

## Background Information

Giantin is a conserved Golgi membrane protein containing a large cytoplasmic domain. It may function to form the intercisternal cross-bridges of the Golgi complex. Anti-Giantin has been widely used to label the Golgi apparatus.

## Notable Publications

Author	Pubmed ID	Journal	Application
Huiying Xue	28769563	Int J Nanomedicine	
Maryam Arab	36512212	Methods Mol Biol	WB
Jian Bao	34864680	J Alzheimers Dis	IF

## Storage

### Storage:

Store at -20°C. Stable for one year after shipment.

### Storage Buffer:

PBS with 0.02% sodium azide and 50% glycerol pH 7.3.

Aliquoting is unnecessary for -20°C storage

\*\*\* 20ul sizes contain 0.1% BSA

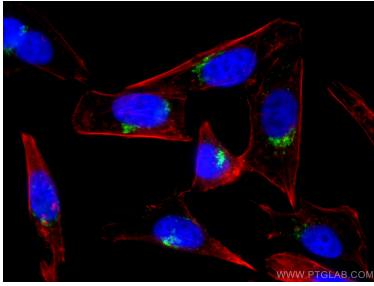
For technical support and original validation data for this product please contact:

T: 1 (888) 4PTGLAB (1-888-478-4522) (toll free in USA), or 1(312) 455-8498 (outside USA)

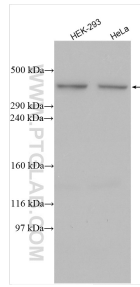
E: [proteintech@ptglab.com](mailto:proteintech@ptglab.com)  
W: [ptglab.com](http://ptglab.com)

This product is exclusively available under Proteintech Group brand and is not available to purchase from any other manufacturer.

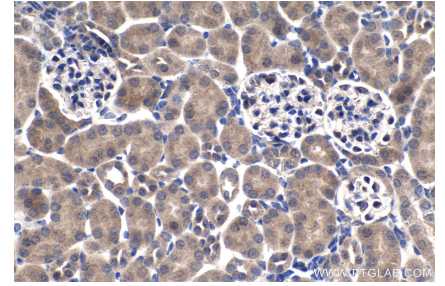
## Selected Validation Data



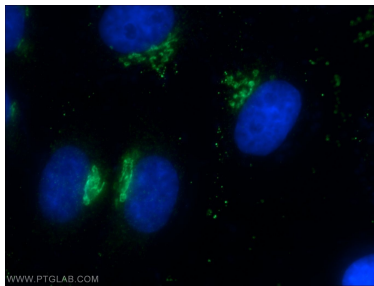
Immunofluorescent analysis of (4% PFA) fixed HepG2 cells using Giantin antibody (22270-1-AP) at dilution of 1:200 and CoraLite® 488-Conjugated Goat Anti-Rabbit IgG(H+L), CL594-Phalloidin (red).



Various lysates were subjected to Tris-Acetate gel system followed by western blot with 22270-1-AP (Giantin antibody) at dilution of 1:500 incubated at room temperature for 1.5 hours.



Immunohistochemical analysis of paraffin-embedded mouse kidney tissue slide using 22270-1-AP (Giantin antibody) at dilution of 1:500 (under 40x lens). Heat mediated antigen retrieval with Tris-EDTA buffer (pH 9.0).



Immunofluorescent analysis of HepG2 cells using 22270-1-AP (Giantin antibody) at dilution of 1:50 and Alexa Fluor 488-conjugated Goat Anti-Rabbit IgG(H+L).